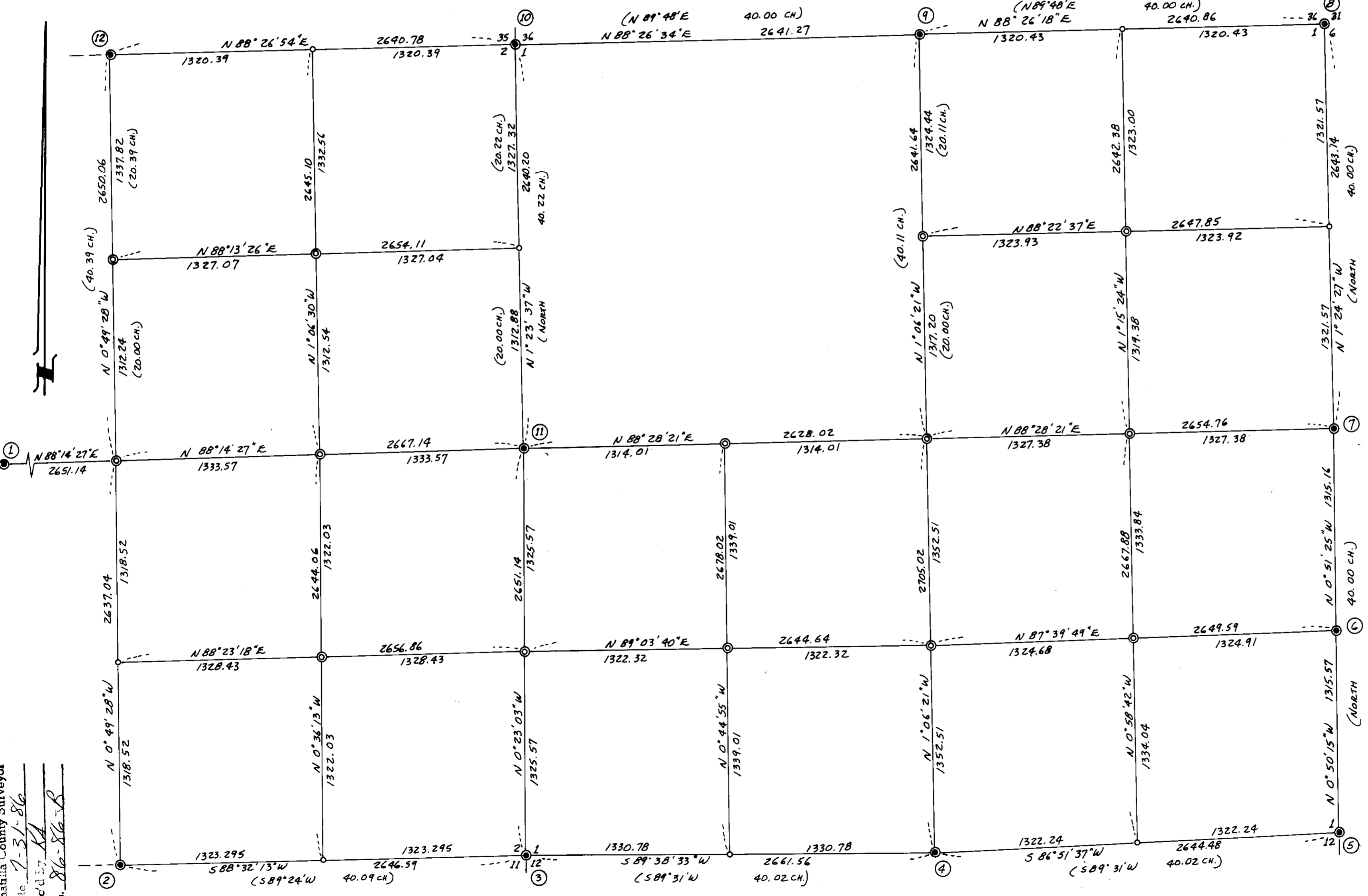


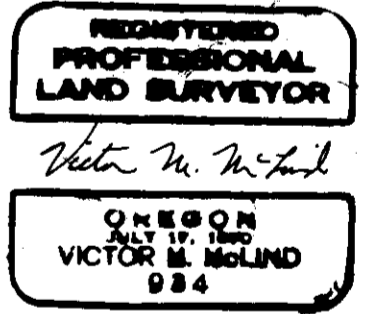
- ①  $\frac{1}{4}$  CORNER TO SECTIONS 2 & 3, T3N, R37E  
FOUND CORNER SET BY ME IN JUNE, 1986, A 2"x30" ALUMINUM PIPE WITH 2 1/2" ALUMINUM CAP, MKD. AS SHOWN, IN A MOUND OF STONE, FROM WHICH:  
13" FIR WITH SCRIBES "453BT" BEARS N50 1/4° W, 18.0 FT.  
16" FIR WITH SCRIBES "452BT" BEARS N76 3/4° E, 19.3 FT.
- ②  $\frac{1}{4}$  CORNER TO SECTIONS 2 & 11, T3N, R37E  
FOUND CORNER SET BY ME IN JUNE, 1986, A 2"x30" ALUMINUM PIPE WITH 2 1/2" ALUMINUM CAP, MKD. AS SHOWN, FROM WHICH:  
18" FIR WITH SCRIBES "4511BT" BEARS S74° E, 49.7 FT.  
6 1/2" SPRUCE WITH SCRIBES "452BT" BEARS N44° W, 3.0 FT.
- ③ SECTION CORNER TO SECTIONS 1, 2, 11 & 12, T3N, R37E  
FOUND 2" IRON PIPE WITH 2 1/2" BRASS CAP, MKD. AS SHOWN, IN A STONE MOUND.  
FOUND 4 OBJ.'S IN GOOD CONDITION AS FOLLOWS:  
30" FIR, HEALED BLAZE, BEARS S46° E, 16.8 FT.  
29" FIR, HEALED BLAZE, BEARS S40° W, 9.9 FT.  
34" FIR, HEALED BLAZE, BEARS N35° W, 22.4 FT.  
22" FIR, PARTLY OPENED BLAZE, SCRIBES "S1" VISIBLE, BEARS N14° E, 46.2 FT.
- ④  $\frac{1}{4}$  CORNER TO SECTIONS 1 & 12, T3N, R37E  
FOUND 2" PIPE WITH 2 1/2" BRASS CAP, MKD. AS SHOWN, 6" ABOVE GROUND, GOOD CONDITION, FROM WHICH:  
OBJ., A 32" FIR STUMP WITH SCRIBES "BT" VISIBLE, BEARS N80° E, 16.5 FT. (25 LKS.)  
11" PINE, HEALED BLAZE, BEARS S55° E, 54.0 FT.  
10" LARCH, NEARLY HEALED BLAZE, BRS. N36° E, 54.0 FT.
- ⑤ SECTION CORNER TO SECTIONS 1 & 12 ONLY, T3N, R37E  
FOUND 2" PIPE WITH 2 1/2" BRASS CAP, MKD. AS SHOWN IN A STONE MOUND, FROM WHICH:  
32" PINE SNAG, CHOPPED BLAZE WITH NO VISIBLE SCRIBES, BEARS N18° E, 33.7 FT. (51 LKS.)  
28" PINE WITH PARTLY HEALED BLAZE, NO SCRIBES VISIBLE, BEARS S70° E, 70.6 FT. (107 LKS.)  
12" FIR WITH SCRIBES "T3N R37E S1BT" VISIBLE ON OPEN FACE, BEARS N10° W, 32.0 FT.  
15" FIR, ALMOST HEALED FACE, BEARS S20° W, 61.0 FT.
- ⑥ SOUTH 1/4 CORNER ON E. SIDE OF SEC. 1, T3N, R37E  
FOUND 2" PIPE WITH 2 1/2" BRASS CAP, MKD. AS SHOWN, 4" ABOVE GROUND, GOOD CONDITION, FROM WHICH:  
15" LARCH, PARTIAL SCRIBES VISIBLE ON PARTLY HEALED FACE, BEARS S50° W, 51.8 FT.
- ⑦ EAST 1/4 CORNER TO SEC. 1 ONLY, T3N, R37E  
FOUND 2" PIPE WITH 2 1/2" BRASS CAP, MKD. AS SHOWN, GOOD CONDITION, FROM WHICH:  
40" ROTTED FIR STUMP WITH ROTTED LOG ALONGSIDE, SCRIBES "45" VISIBLE, BEARS S60° W, 81.6 FT. (13 LKS.)  
16" FIR, PARTIAL SCRIBES VISIBLE, BEARS S73° W, 61.5 FT.
- ⑧ TOWNSHIP CORNER TO TOWNSHIPS 3 & 4 N., RANGES 37 & 38 E.  
FOUND 2" PIPE WITH 3" BRASS CAP, MKD. AS SHOWN, 8" ABOVE GROUND, GOOD CONDITION, FROM WHICH:  
42" FIR SNAG, SCRIBES "R38E S6" VISIBLE ON CHOPPED OPEN FACE, BEARS S76° E, 72.6 FT. (110 LKS.)  
42" FIR SNAG, NO SCRIBES VISIBLE ON ROTTED FACE, BEARS N44° W, 48.8 FT. (74 LKS.)
- ⑨  $\frac{1}{4}$  COR. TO SEC. 1, T3N, R37E, AND SEC. 36, T4N, R37E  
FOUND 2" PIPE WITH 2 1/2" BRASS CAP, MKD. AS SHOWN, 6" ABOVE GROUND, GOOD CONDITION, FROM WHICH:  
12" FIR, SCRIBES "4536 BT" VISIBLE ON PARTLY HEALED FACE, BEARS N85 1/2° W, 84.0 FT.  
12" SPRUCE, PARTIAL SCRIBES VISIBLE ON PARTLY HEALED FACE, BEARS S9 1/2° E, 72.0 FT.
- ⑩ COR. TO SECS. 1 & 2, T3N, R37E, AND SECS. 35 & 36, T4N, R37E  
FOUND 2" PIPE WITH 2 1/2" BRASS CAP, MKD. AS SHOWN, FROM WHICH:  
16" FIR, PARTIAL SCRIBES VISIBLE, BEARS S21° W, 51.0 FT.  
18" FIR, PARTIAL SCRIBES VISIBLE, BEARS S32° E, 105.0 FT.  
14" FIR, PARTIAL SCRIBES VISIBLE, BEARS N71° W, 60.0 FT.  
15" FIR, PARTIAL SCRIBES VISIBLE, BEARS N51° E, 110.0 FT.
- ⑪  $\frac{1}{4}$  CORNER TO SECTIONS 1 & 2, T3N, R37E  
FOUND 2" PIPE WITH 2 1/2" BRASS CAP, MKD. AS SHOWN, 4" ABOVE GROUND, GOOD CONDITION, FROM WHICH:  
36" FIR, PARTIAL SCRIBES VISIBLE ON CHOPPED OPEN FACE, BEARS N17° E, 17.8 FT. (27 LKS.)  
ROTTED FIR STUMP, NO MARKS VISIBLE, BRS. N50° W, 4.0 FT. (6 LKS.)  
12" LARCH, PARTIAL SCRIBES VISIBLE, BEARS N8° W, 43.5 FT.
- ⑫  $\frac{1}{4}$  COR. TO SEC. 2, T3N, R37E, AND SEC. 35, T4N, R37E.  
FOUND 2" PIPE WITH 2 1/2" BRASS CAP, MKD. AS SHOWN, 4" ABOVE GROUND, GOOD CONDITION, FROM WHICH:  
11" FIR, HEALED FACE, BEARS N56° E, 22.0 FT.  
16" FIR, SCRIBES "452" VISIBLE ON PARTLY HEALED FACE, BEARS S2° E, 20.0 FT.



**NARRATIVE:**  
THE PURPOSE OF THIS SURVEY WAS TO SUBDIVIDE SECTIONS 1 AND 2 AND TO SET THE CENTER 1/4 CORNERS AND TWELVE 1/8 CORNERS. THE METHOD OF SURVEY WAS TO RUN CLOSED RANDOM TRAVERSES TO TIE ALL CONTROL CORNERS AND TO SET CONTROL POINTS FOR SETTING CORNERS. SECTIONAL SUBDIVISION AND PROPORTIONMENT WAS DONE IN ACCORDANCE WITH THE MANUAL OF INSTRUCTIONS FOR THE SURVEY OF THE PUBLIC LANDS OF THE UNITED STATES, 1973 EDITION. A TOPCON GTS 10D THEODOLITE WITH BUILT-IN ELECTRONIC DISTANCE METER WAS USED.

**HISTORY OF SURVEYS:**  
THE SECTION AND 1/4 SECTION CORNERS SHOWN ORIGINALLY WERE SET BY GEORGE S. PERSHIN, G.L.O. CONTRACT NOS. 304 AND 340, IN 1879. RENONUMENTATION WAS DONE BY ME AND JAMES HANLEY, PER COUNTY SURVEYOR'S FILE NOS. 86-85-B & L-56-B

**SURVEYOR'S CERTIFICATE:**  
I, VICTOR M. MCLIND, A REGISTERED LAND SURVEYOR IN THE STATE OF OREGON, HEREBY CERTIFY THAT THIS PLAT AND THE NOTES HEREON OR ATTACHED CORRECTLY REPRESENTS A SURVEY PERFORMED BY ME DURING JULY, 1986, AT THE REQUEST OF BOISE CASCADE CORP. IN ACCORDANCE WITH THE STATUTES OF THE STATE OF OREGON.  
VICTOR M. MCLIND, OREG. L.S. #934



- LEGEND**
- FOUND MONUMENTED CORNER, USED FOR CONTROL
  - SET 2"x30" ALUMINUM PIPE WITH 2 1/2" ALUMINUM CAP BY SURVEY. (SEE RECORD OF LAND CORNER MONUMENTATION FORMS FILED HEREWITH.)
  - CALCULATED ONLY, NOT FOUND OR SET.
  - ( ) BRACKETS INDICATE G.L.O. RECORD

**RECORD OF SURVEY**  
FOR BOISE CASCADE CORPORATION  
IN SECTIONS 1 & 2, T3N, R37E, W.M.  
SURVEYED BY VICTOR M. MCLIND, L.S. 934  
JULY, 1986 SCALE: 1"=500'  
BEARINGS ARE OREGON STATE PLANE COORDINATE SYSTEM GRID BEARINGS (NORTH ZONE) AND WERE CALCULATED FROM SOLAR OBSERVATIONS TAKEN ON JUNE 23, 1986. TRUE BEARINGS MAY BE OBTAINED BY ROTATING SHOWN BEARINGS RIGHT APPROXIMATELY 1°40'

RECEIVED BY  
Umatilla County Surveyor  
Date 7-31-86  
Rec'd by SA  
No. 86-86-B