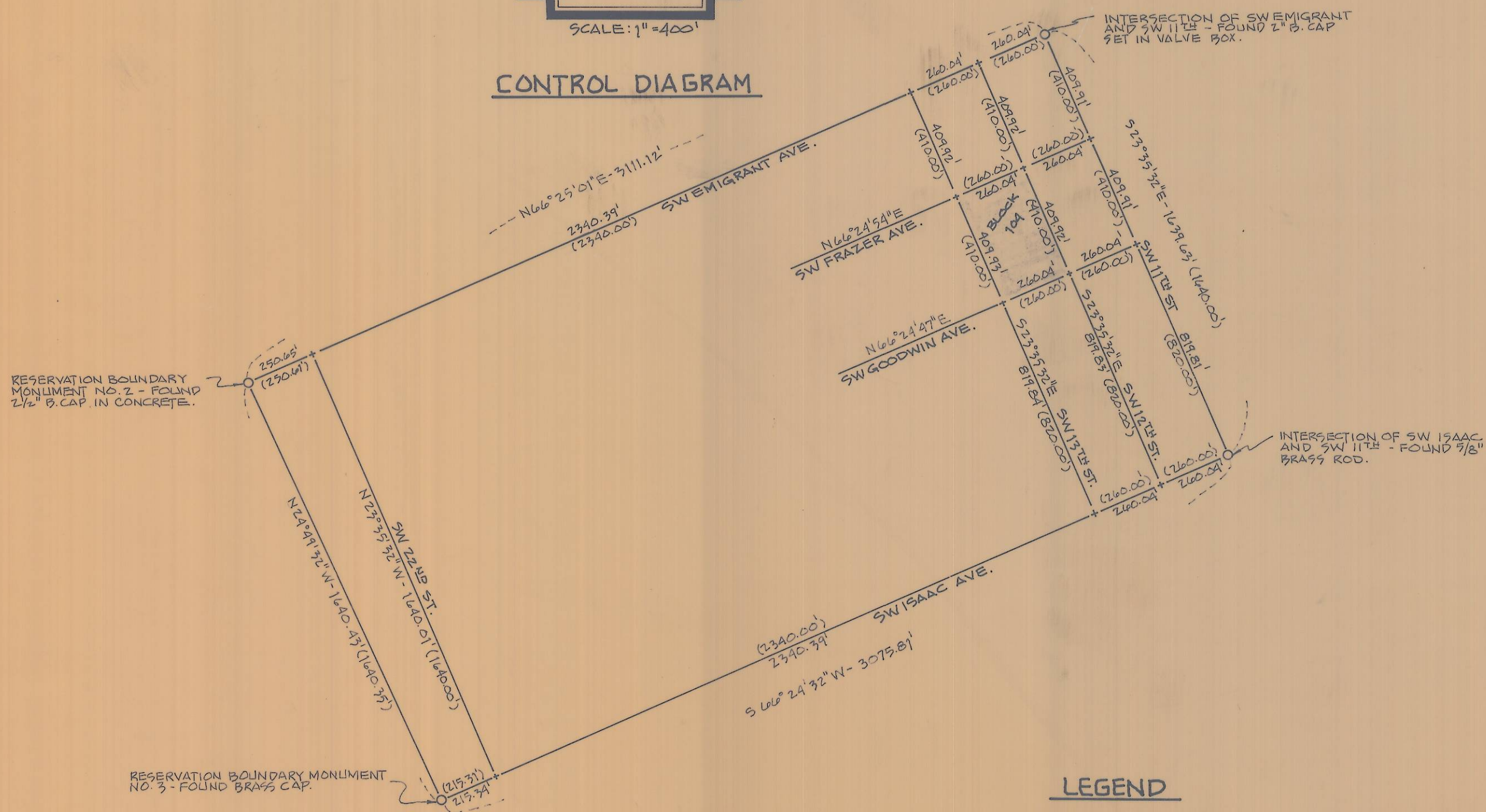




SCALE: 1" = 400'

CONTROL DIAGRAM



LEGEND

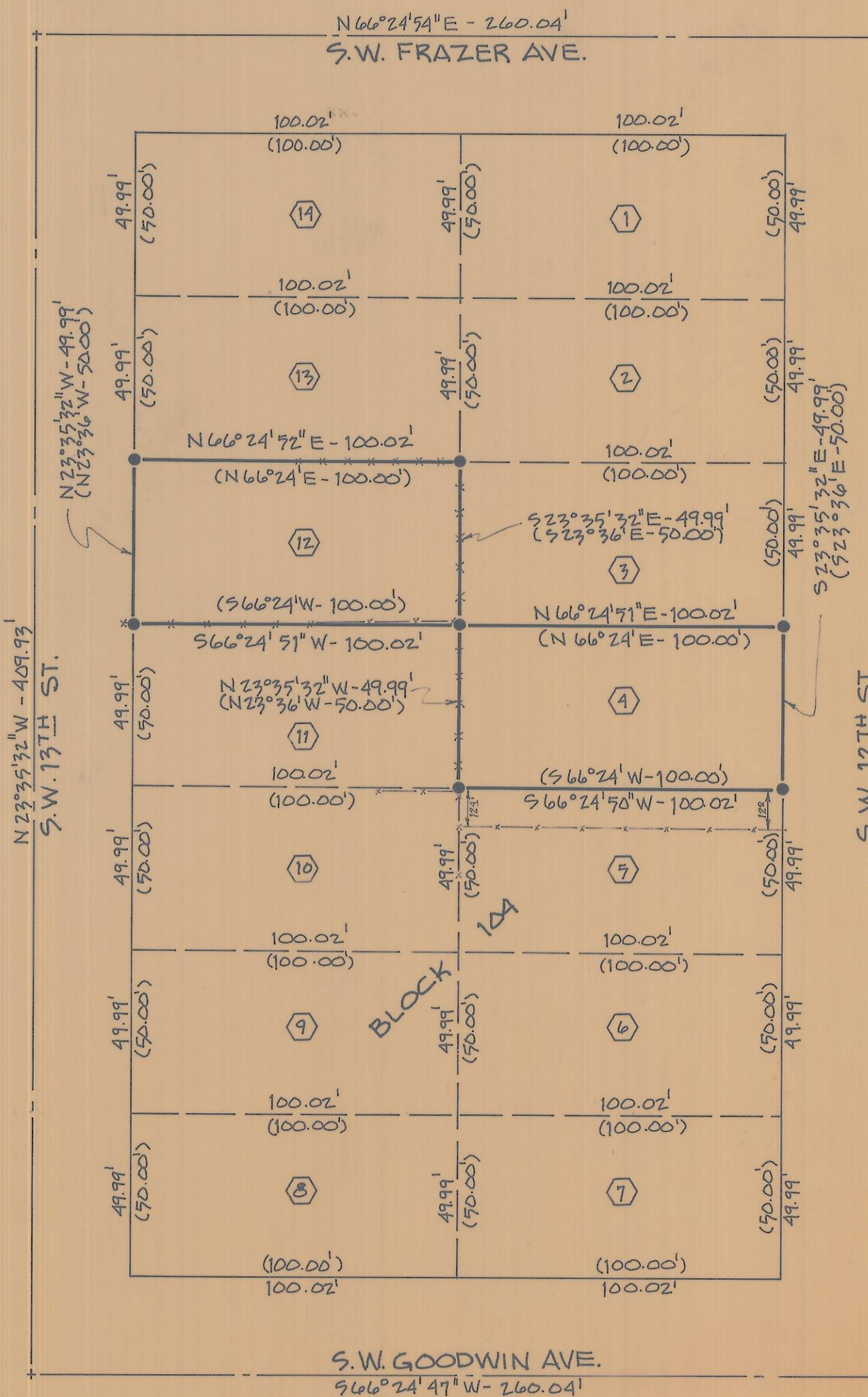
- - MONUMENTS FOUND AS NOTED.
- - SET 3/8" x 30" L PIN W/PLASTIC CAP STAMPED "WR WELLS PLS 1106".
- (XOX) - BEARINGS AND DISTANCES OF RECORD.
- - EXISTING FENCES.

NARRATIVE OF SURVEY

THE PURPOSE OF THIS SURVEY WAS TO LOCATE THE CORNERS OF LOTS 4 AND 12, BLOCK 104, RESERVATION ADDITION. CORNER LOCATIONS WERE BASED ON PROPORTIONAL MEASUREMENTS BETWEEN THE MONUMENTS SHOWN ON THE CONTROL DIAGRAM. THERE ARE SEVERAL RAILROAD SPIKE MONUMENTS ALONG SW EMIGRANT AVE. BETWEEN RB NO. 7 AND THE MONUMENT AT SW EMIGRANT AND SW 11TH. THESE RAILROAD SPIKES, SET BY THE CITY, WERE NOT USED FOR CONTROL ON THIS SURVEY BECAUSE, ACCORDING TO RICK YOGLE, ASSISTANT CITY ENGINEER, THE SPIKES ARE SLIGHTLY OUT OF POSITION AND ARE TO BE RELOCATED AT A LATER DATE. BEARINGS FOR THIS SURVEY ARE BASED ON THE CITY OF PENDLETON LOCAL GRID. MEASUREMENTS WERE MADE WITH ONE SECOND THEODOLITE, STEEL TAPE, AND INFA-RED DISTANCE MEASURING EQUIPMENT.



SCALE: 1" = 40'



REGISTERED
PROFESSIONAL
LAND SURVEYOR

William R. Wells

OREGON
JULY 22, 1977
WILLIAM R. WELLS
1106

WILLIAM R. WELLS, PLS
LAND SURVEYING SERVICES
P.O. BOX 1696
PENDLETON, OREGON 97801
PHONE: 503 276 6362

Date: 1-24-85 Dr. By: WRW
Ck. By: WRW No: 5-5

PROJECT:
SURVEY FOR
HARRY RUEBER

LOTS 4 AND 12, BLOCK 104,
RESERVATION ADDITION TO
PENDLETON, OR, LOCATED
IN THE SE 1/4 AND THE SW 1/4
OF SECTION 10, T24N, R32E, WM,
UMATILLA COUNTY, OREGON

RECEIVED BY
Umatilla County Surveyor
Date: 2/85
Rec'd By: *bc*
No. 85-15-B