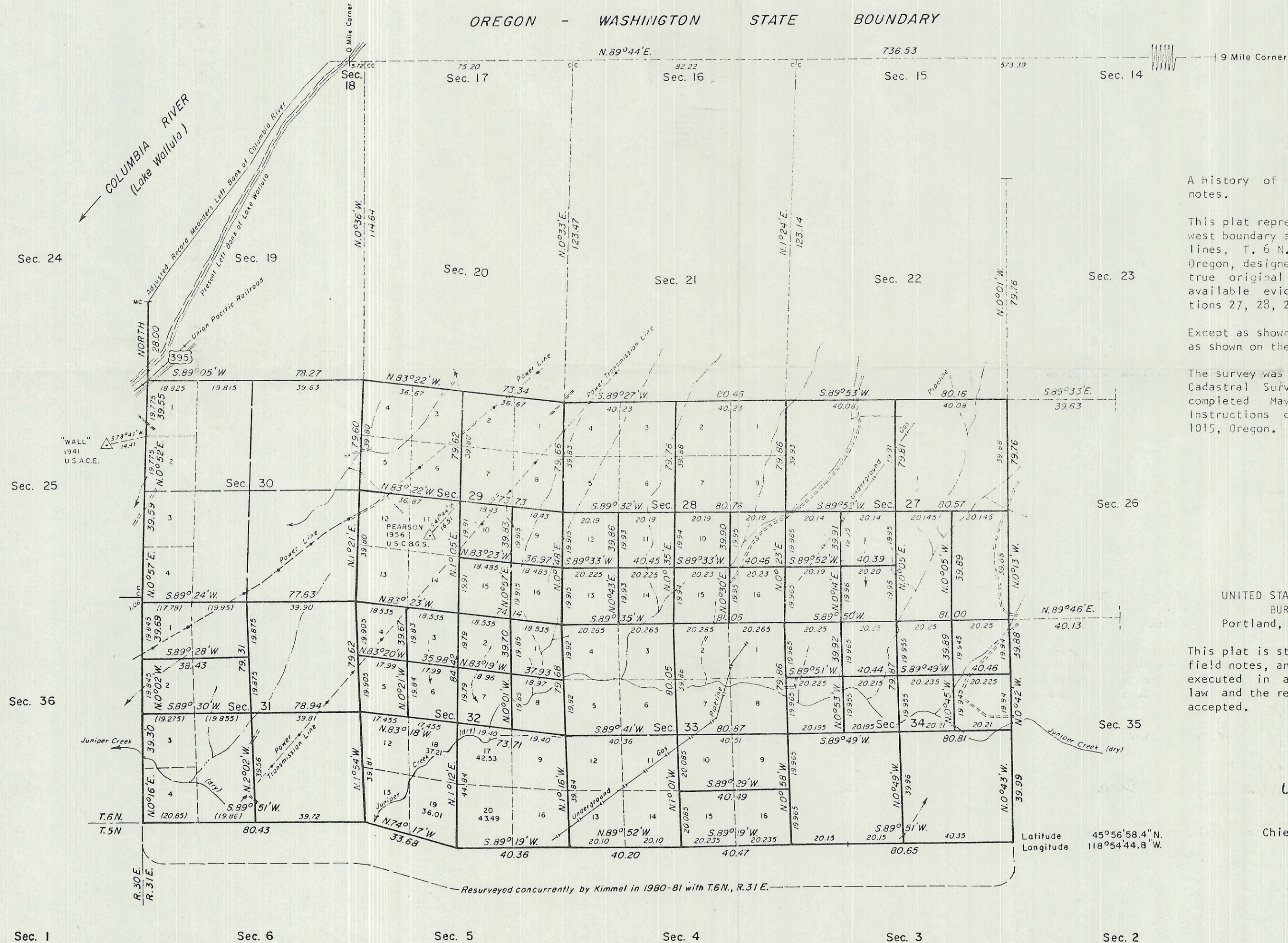
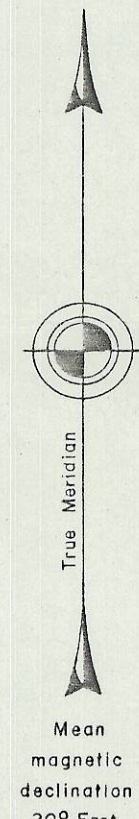


TOWNSHIP 6 NORTH, RANGE 31 EAST, OF THE WILLAMETTE MERIDIAN, OREGON.

DEPENDENT RESURVEY AND SUBDIVISION OF SECTIONS 27, 28, 29, 31, 32, 33, AND 34



A history of surveys is contained in the field notes.

This plat represents a dependent resurvey of the west boundary and a portion of the subdivisional lines, T. 6 N., R. 31 E., Willamette Meridian, Oregon, designed to restore the corners in their true original locations according to the best available evidence, and the subdivision of sections 27, 28, 29, 31, 32, 33, and 34.

Except as shown hereon, the lottings and areas are as shown on the plat approved June 23, 1875.

The survey was executed by William D. Kimmel, Cadastral Surveyor, beginning July 7, 1980 and completed May 8, 1981, pursuant to Special Instructions dated May 14, 1980, for Group No. 1015, Oregon.

UNITED STATES DEPARTMENT OF THE INTERIOR
BUREAU OF LAND MANAGEMENT
Portland, Oregon October 14, 1983

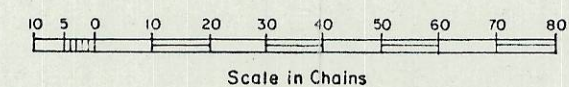
This plat is strictly conformable to the approved field notes, and the survey, having been correctly executed in accordance with the requirements of law and the regulations of this Bureau, is hereby accepted.

For the Director

William W. Glenn

Chief Cadastral Surveyor of Oregon

Latitude 45°56'58.4"N.
Longitude 118°54'44.8"W.



RECEIVED BY
Umatilla County Surveyor
Date 11-83
Rec'd By BC
No. 83-176-B