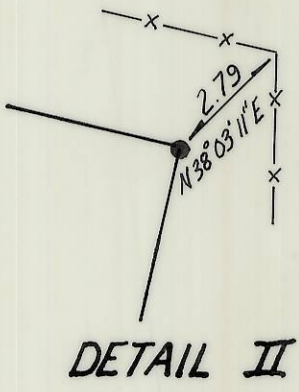
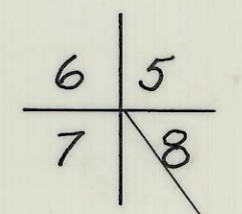
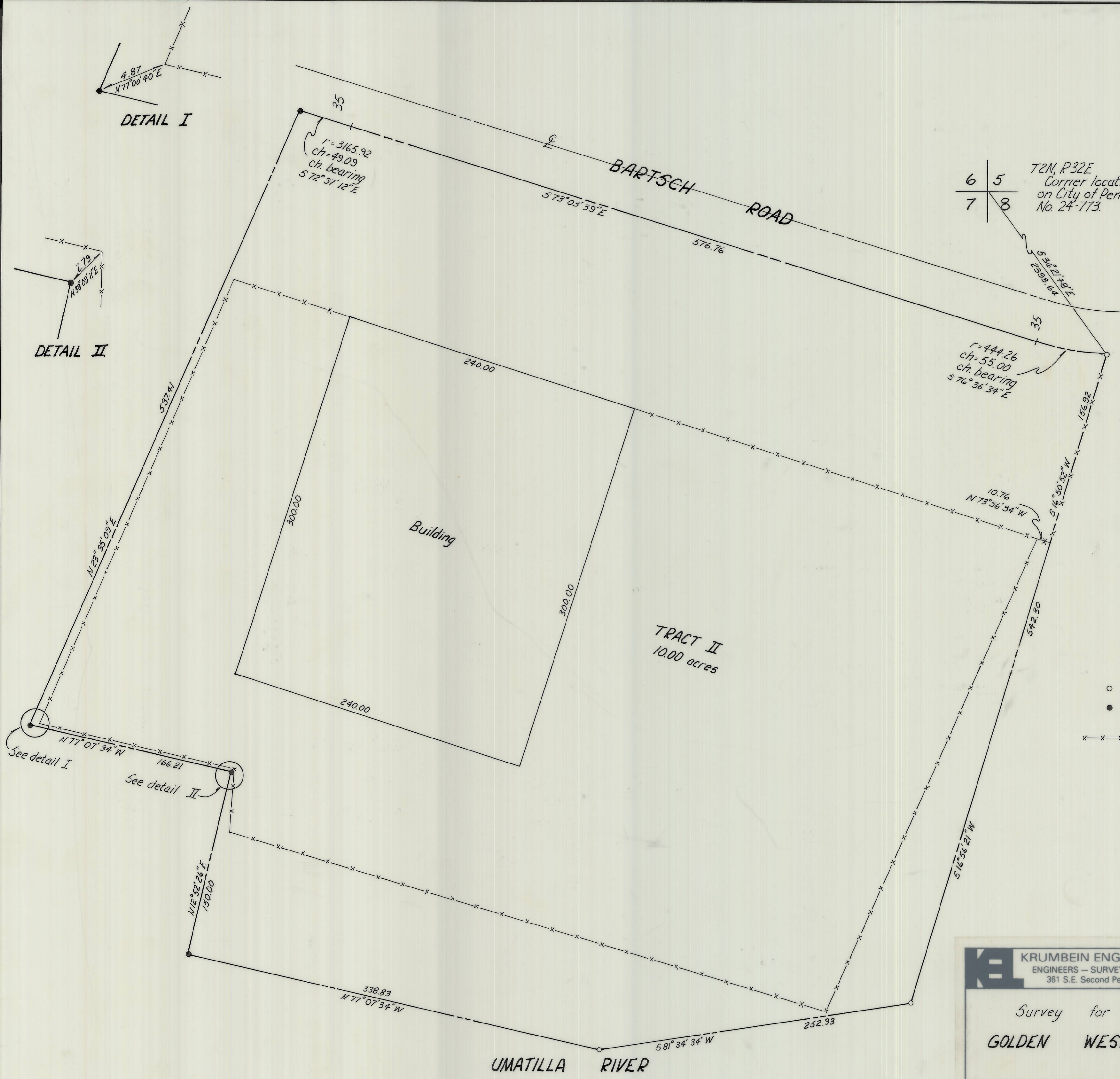


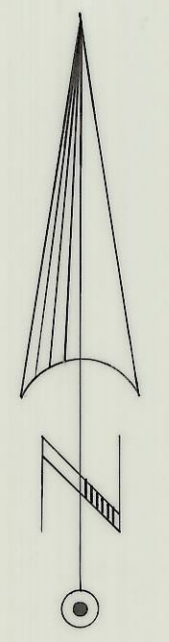
DETAIL I



DETAIL II



T2N, R32E
Corner location as shown
on City of Pendleton Drwg.
No. 24-773.



NARRATIVE:

This survey is based on ties to the N.W. corner of Sec. 8, T2N, R32E, and the N.E. corner of Tract II, a 5/8" iron rod, a survey done by the City of Pendleton Engineering Dept. dated 7-28-76 and a survey done by Norpa Dev. Inc. dated 12-7-77, County Survey No. P-75-C. There is another coordinated location for the N.W. corner of Sec. 8 as shown on County Survey Drwg. No. P-75-C and J-81-B. Bearings are based upon City of Pendleton Local Grid System.

- denotes 5/8" iron rod find.
- denotes 5/8" x 30 iron pin w/alum. cap stamped P.L.5. 933 set
- x-x-x denotes fence

KRUMBEIN ENGINEERING LTD. ENGINEERS - SURVEYORS - PLANNERS 361 S.E. Second Pendleton, Oregon	Scale 1"=50'	Drn. By R.D.R.	Drng. No. 83-21C	Revision 1
	Date 5-25-83	Cl'd By D.H.K.	Job No. 83-58	Revision 2
Survey for GOLDEN WEST		REGISTERED PROFESSIONAL LAND SURVEYOR <i>David H. Krumbein</i>		RECEIVED BY Umatilla County Surveyor Date <i>July 21, 1983</i> Rec'd By <i>bc</i> No. <i>83-152-B</i>
Sec. 8, T2N, R32E, W.M.		OREGON JULY 17, 1970 DAVID H. KRUMBEIN 933		