

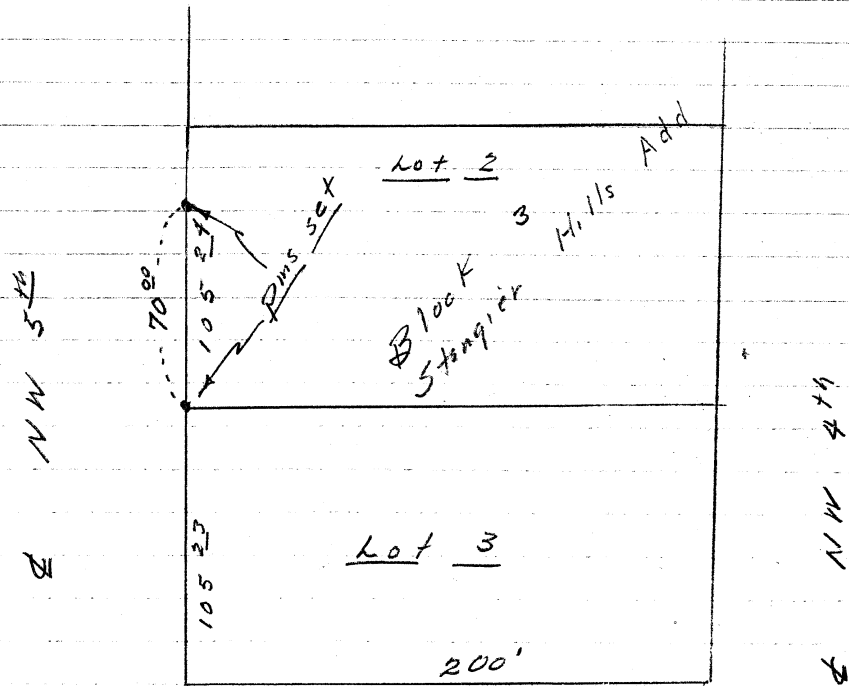
Field Notes NW 1/4 SE 1/4 (B)

Survey for: Inland Builders

By: Vernon R. Tenneson & Assoc.

Location: "Stangier Hills Add" Pendleton
Fraction of Lot #2 B1K #3

We used control points established by a prior survey. (See field notes filed Oct 21 1955) on Survey for "Inland Builders" See sketch below for points set.



NW Ingram

Stanley J. Halluki

303

Q-1252-F