

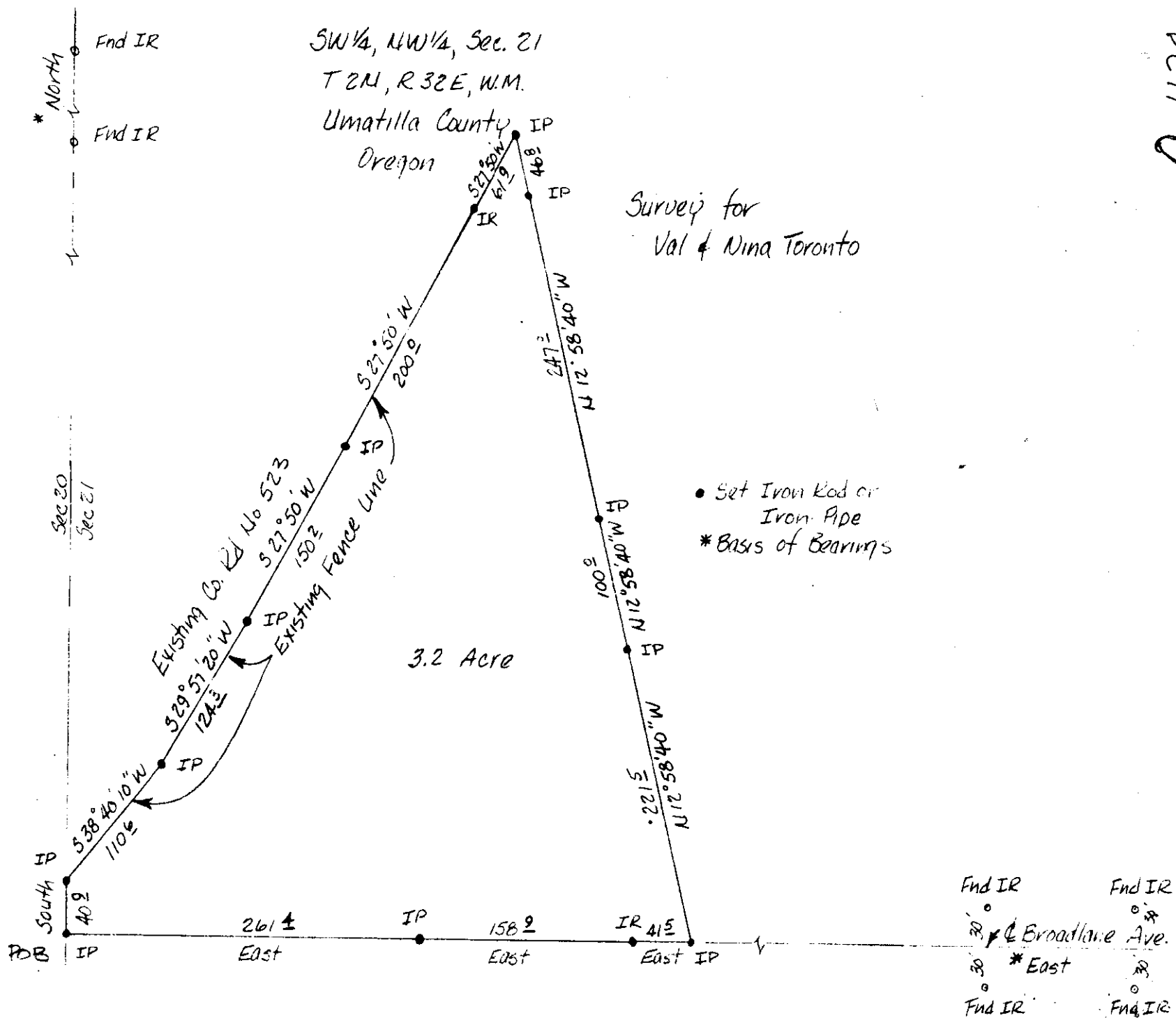
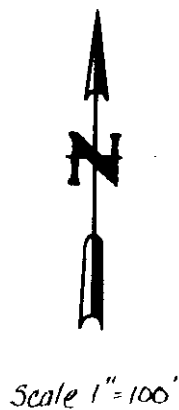
Q-1170-Ax

Exhibit "A"

SW 1/4, NW 1/4, Sec. 21
T 2N, R 32E, W.M.

Umatilla County
Oregon

Survey for
Val & Nina Toronto



Val Toronto
 Val Toronto & Assoc., Inc.
 Consulting Engineers
 Pendleton, Oregon

J. VAL TORONTO & ASSOC., INC.
 CONSULTING ENGINEERS
 PENDLETON, OREGON

21B C

4/79 JWO

RECEIVED BY

Umatilla County Surveyor

Date 10-10-79

Rec'd By MJS

No. Q-1170-AX