

POINT OF DIVERSION N 60° 54' 30" W.  
AND DISTANT 99.3 FEET FROM THE  
N.E. CORNER OF SECTION 17, T. 1S., R.  
32 E.W.M.

819  
17 16

1320 M.L.

S.E. COR. OF NE.<sup>4</sup> OF NE.<sup>4</sup> OF  
SEC. 17, T. 1S., R. 32 E.W.M.  
STONE FOUND 2" UNDER GROUND

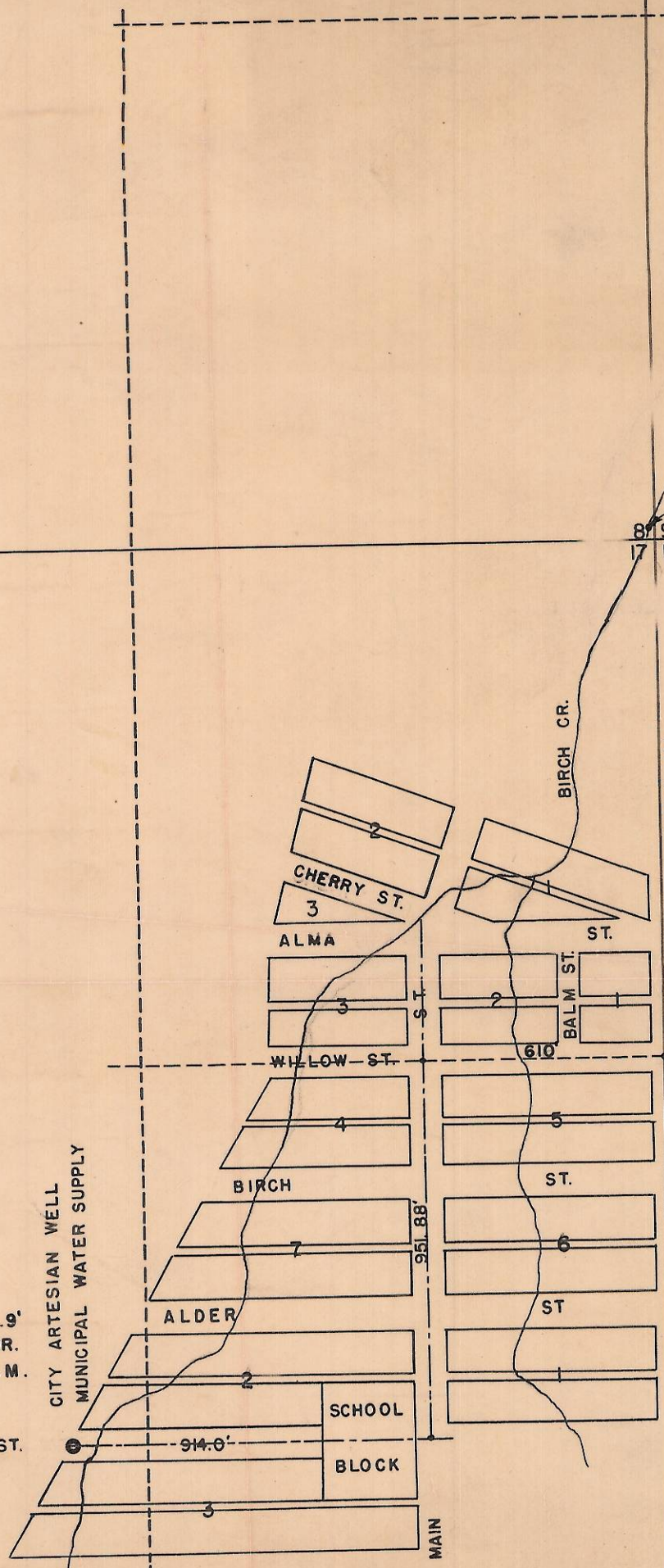
**PLAT SHOWING THE LOCATION  
OF THE  
PILOT ROCK DEEP WELL.  
AND THE  
THE POINT OF DIVERSION  
OF THE.  
THE PILOT ROCK LUMBER COMPANY.**

LOCATED IN THE N.E.<sup>4</sup> OF SECTION  
17, T. 1-S., R. 32 E.W.M.

LOCATION OF WELL S. 2271.9'  
AND W. 1524' OF THE N.E. COR.  
OF SEC. 17, T. 1-S., R. 32 E.W.M.

CITY ARTESIAN WELL  
MUNICIPAL WATER SUPPLY

SUMAC ST.



**NOTE**

The above Plat is made from notes taken  
by R.T. Longhorn while making an actual transit  
and tape survey under my direction and supervision.  
I have examined and checked his notes  
and I hereby certify and affirm that the above  
Plat represents and shows the true location of  
the Well to the best of my knowledge and belief

Scale 1" = 400'



Q-854-AX

Q-824-A