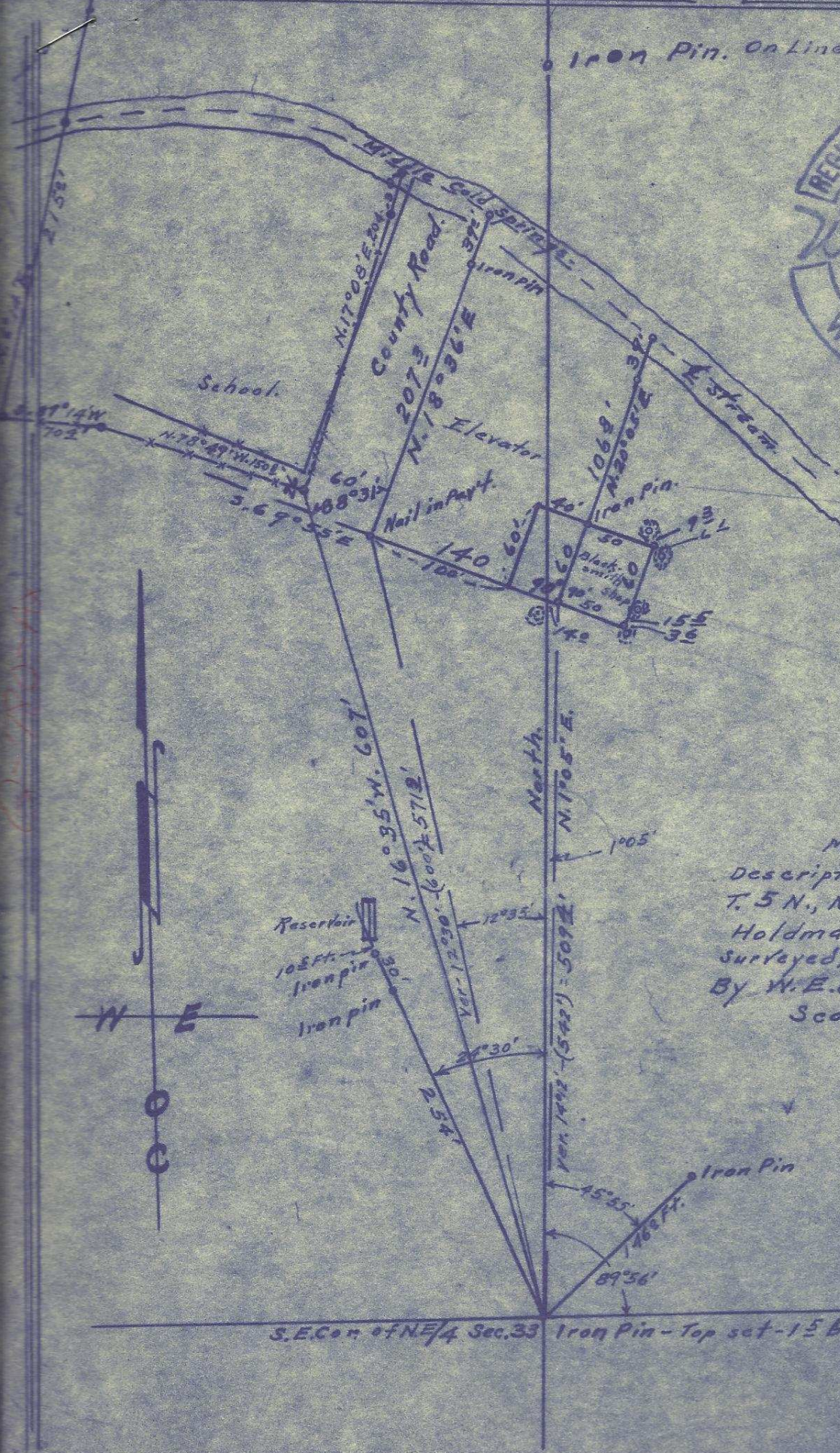


Q-780 AX

Iron Pin. On Line 870 Ft. N. of Cor.



Map showing
Descriptive tracts in Sec. 33
T. 5 N., R. 31 E. W. M. at
Holdman, Umatilla Co., Oregon.
Surveyed, staked & platted, May 1931
By W. E. O. Criger. - checked by F. H. Hayes
Scale: 1 inch = 100 Feet.

Holdman-P

S.E. Cor. of NE/4 Sec. 33 Iron Pin - Top set - 1 1/2 below top of ground. (4)

817

Q-780 AX