

1/2" I. Rod.

N. 89°-06' W.
661.52'

N.E. Cor. of N.E. 1/4 of
N.W. 1/4 of S.E. 1/4

3/4" I.P.

607.05'

3/4" I.P.

N. 89°-06' W.
683'

Q-665-Axe. 1/4 Cor. Sec. 16
5/8" I. Pin

33'

33'

3.03 Ac.

8.9 Ac.

10.06 Acres.

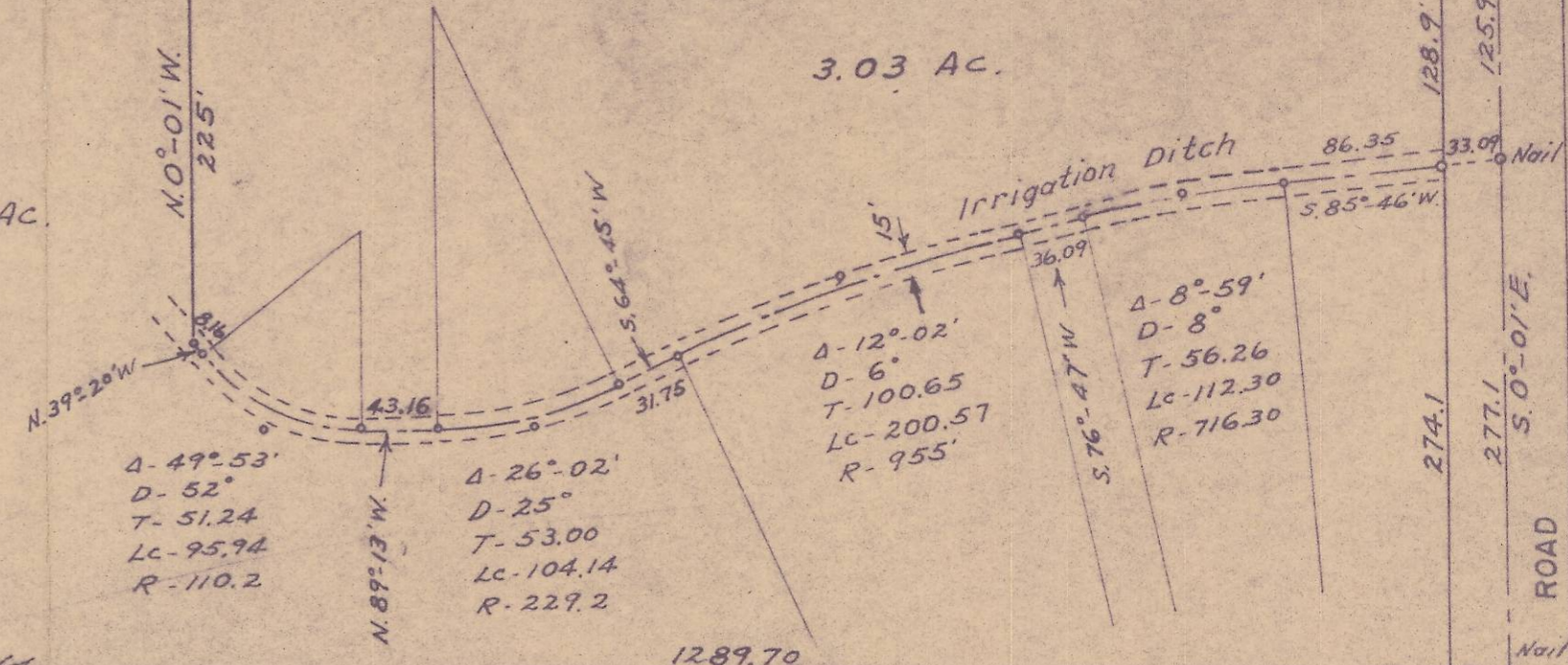
403'
N. 0°-04' W.

3/4" I.P.

258.45'

1/2" I.P.

661.26
S. 89°-10' E.



MAP OF
TRACTS OF LAND
IN THE N. 1/2 OF THE S.E. 1/4 OF SEC. 16, T. 4 N., R. 28 E., W.M.
UMATILLA COUNTY, ORE.
SCALE: 1" = 100'



REGISTERED
OREGON
LAND SURVEYOR
Verl R. Fraley
SEPT. 6, 1935
VERL R. FRALEY
183

STATE HIGHWAY NO. 207
ALSO BUTTERCREEK ROAD