

ST-100 17X

MAP OF

TRACTS OF LAND

IN THE S.W. 1/4 of the S.W. 1/4 of Section 2

Twp. 4 N., R. 28 E., W.M.

Umatilla County, Oregon.

Scale: 1" = 50'

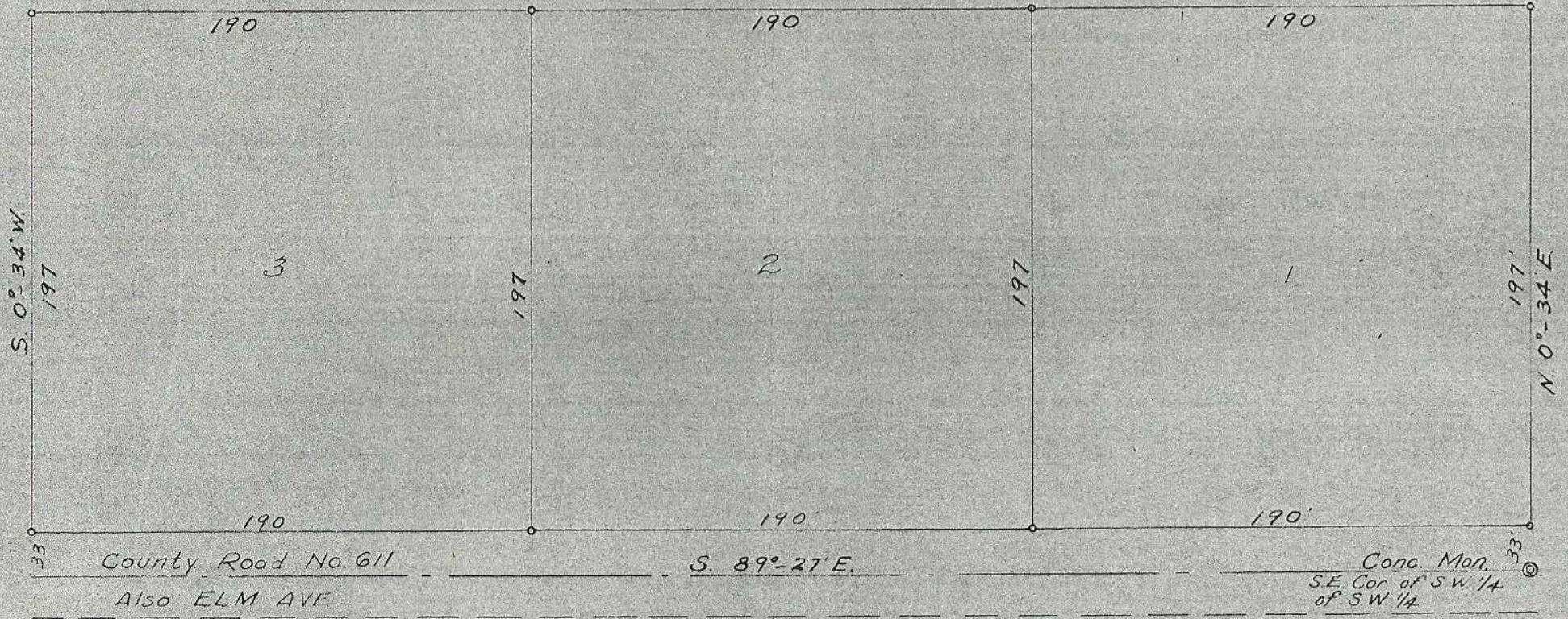
5/8" Pin

NE. Cor. of S.W. 1/4
of S.W. 1/4 Sec 2

REGISTERED
OREGON
LAND SURVEYOR

Verl R. Fraley

SEPT. 6, 1946
VERL R. FRALEY
183



641