

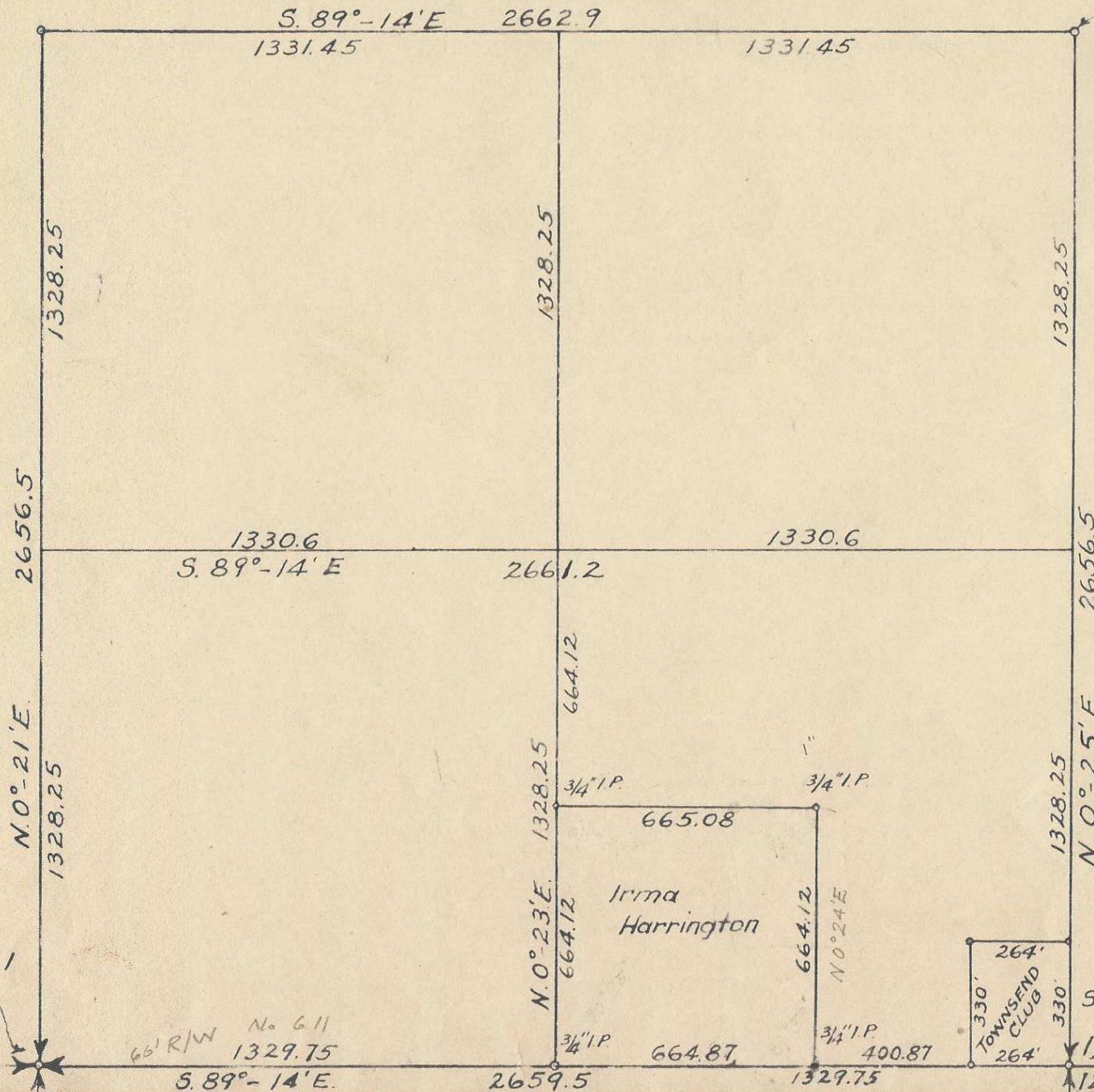
MAP OF
THE S.W. 1/4 OF SECTION 1, T.4 N., R. 28 E., W.M.
UMATILLA COUNTY, ORE.

SCALE: 1" = 400'

Q-560-Ax
orig

W. 1/4 Cor.
1 1/2" I.P.

Center 1/4 Cor.
Sec. 1.
1 1/2" I.P.



REGISTERED
OREGON
LAND SURVEYOR

Verl R. Fraley

SEPT. 6, 1948
VERL R. FRALEY
183

S.W. Cor Sec. 1
1 1/2" I.P.

66' R/W No. 611
1329.75

330'
TOWNSEND
CLUB
264'

S. 1/4 Cor.
3/4" I.P.

S.E. Cor.
6"x6"x12"
Stone
(Found)

115