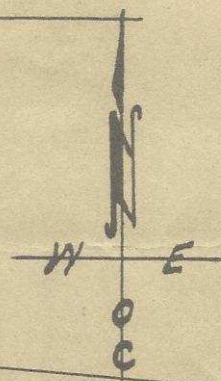
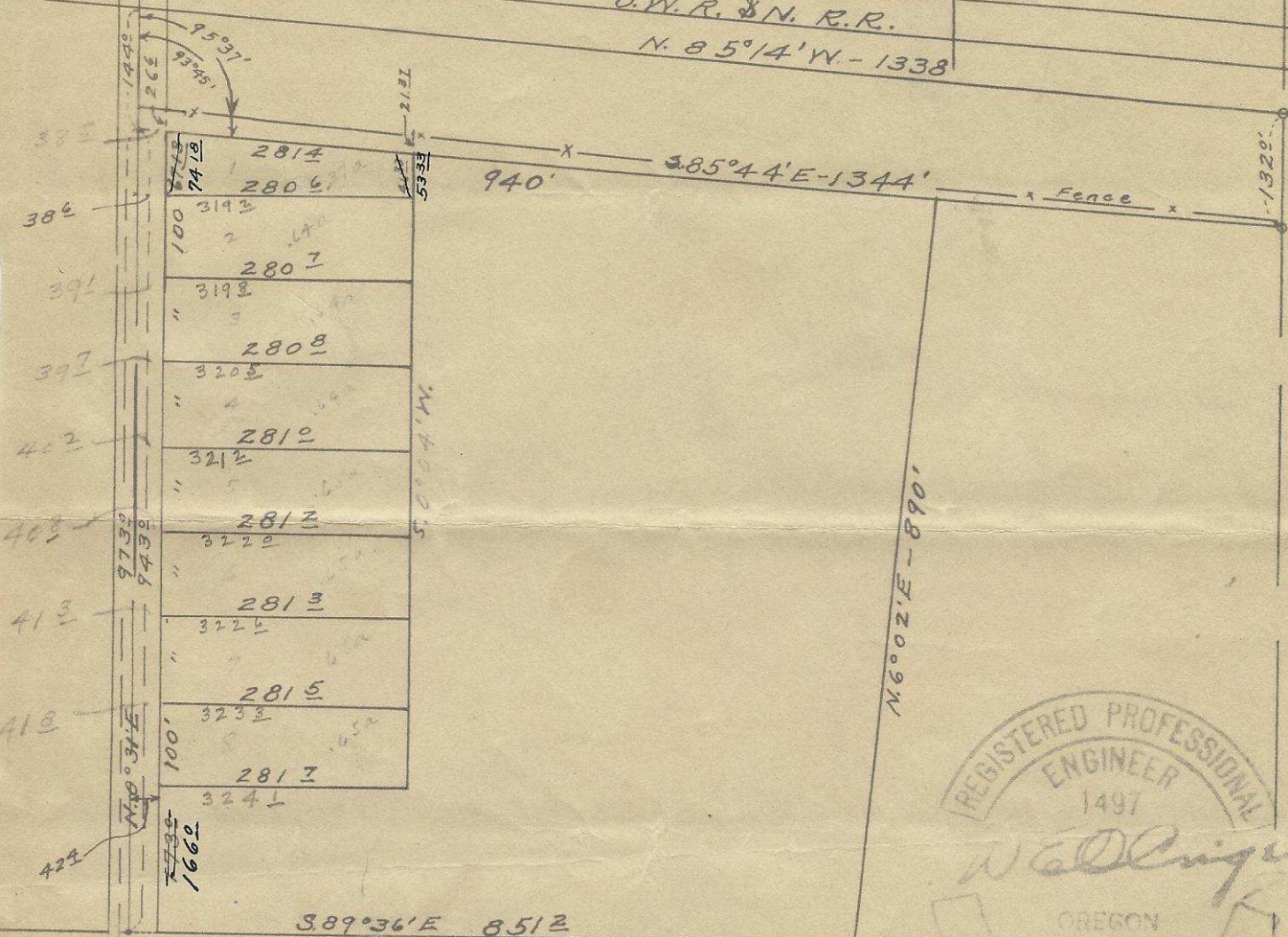


Q-480-Ax
5.210. 3432
W.C. 566°E

Sec. Cor.

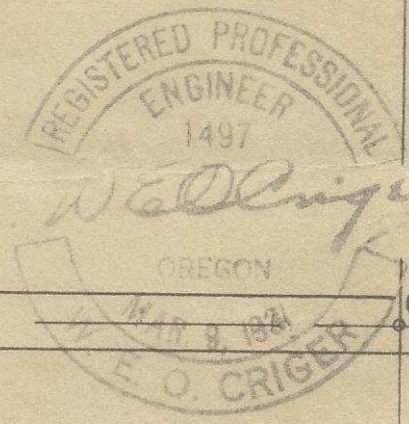


O.W.R. & N.R.R.
N. 85°14'W - 1338



389°36'E 851±
U.S. Highway 30

W.C. 566°E. 110 Lks. = 725'



Center Sec 10

Plat of Descriptive tracts
in N.W. 1/4 of Sec. 10, T.2N., R.33E.W.M.
Scale: 1 inch = 200 Feet.
Surveyed, staked, and platted,
April - 1948.
By W. E. O. Criger.



Sec. Cor.
W.C. 45 1/2 Lks East. = 300'

965