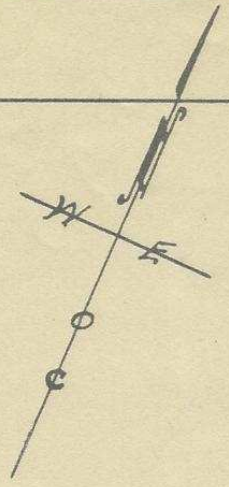


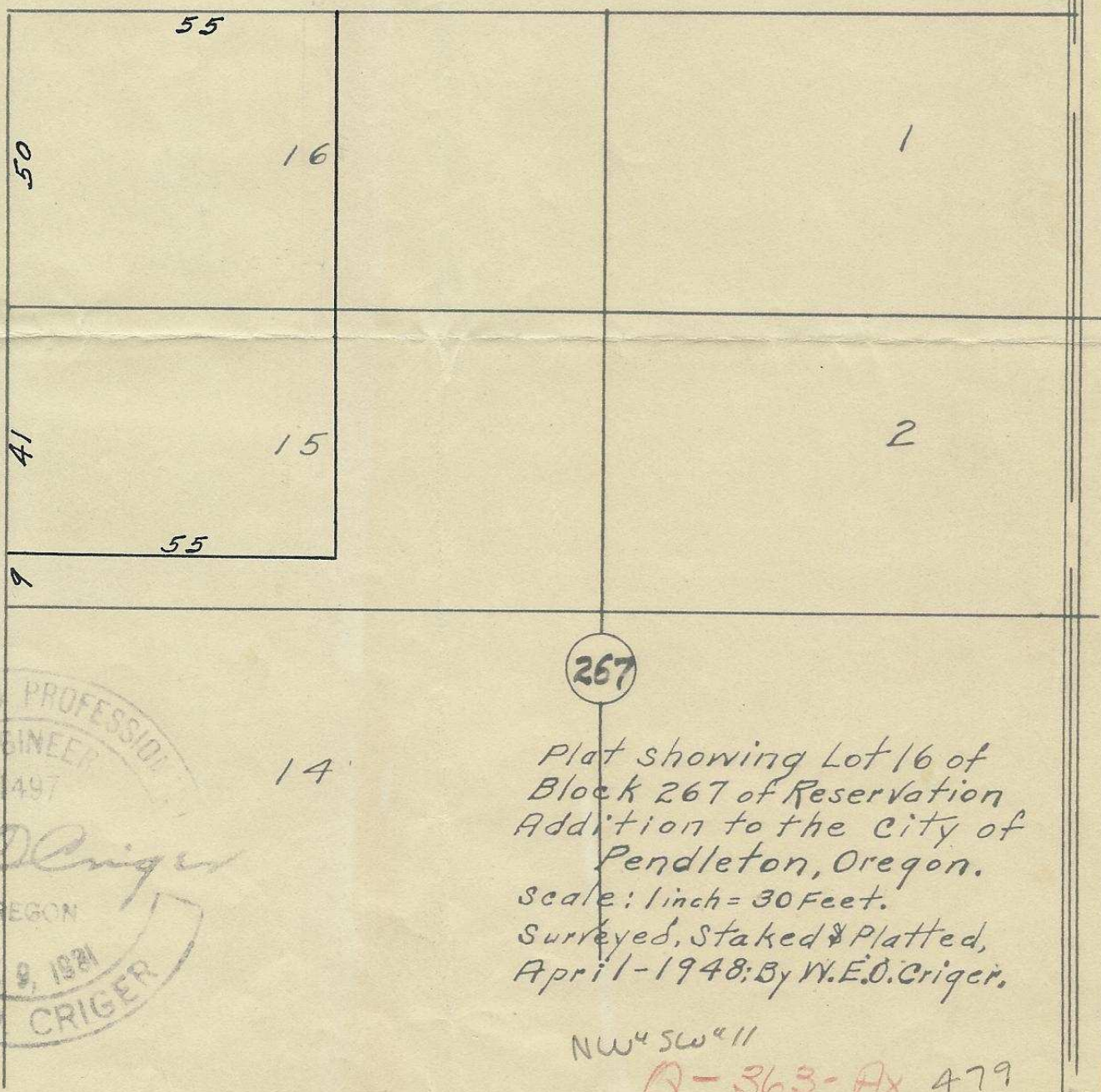
Q-363-Ax

60'

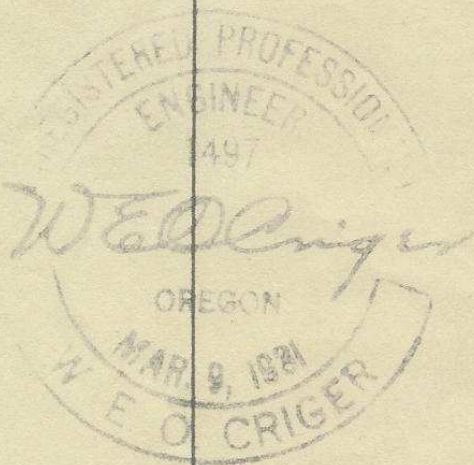
S.W. Isaac Ave.



60'



S.W. 2nd St.



Plat showing Lot 16 of Block 267 of Reservation Addition to the City of Pendleton, Oregon.
 Scale: 1 inch = 30 Feet.
 Surveyed, Staked & Platted, April-1948; By W.E.O. Criger.

NW⁴ SW⁴ 11

Q-363-Ax 479

3