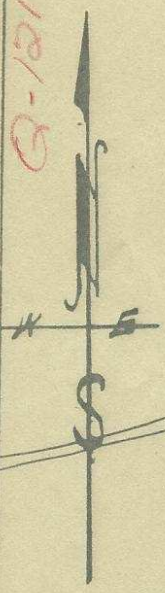


Q-121-AX

S.E. Byers Ave

SE 1/4 SE 1/4 2
Plat Showing
Blocks 141 & 142 of
Reservation Addition to
The City of Pendleton,
Oregon.
Scale: 1 inch = 100 Ft.

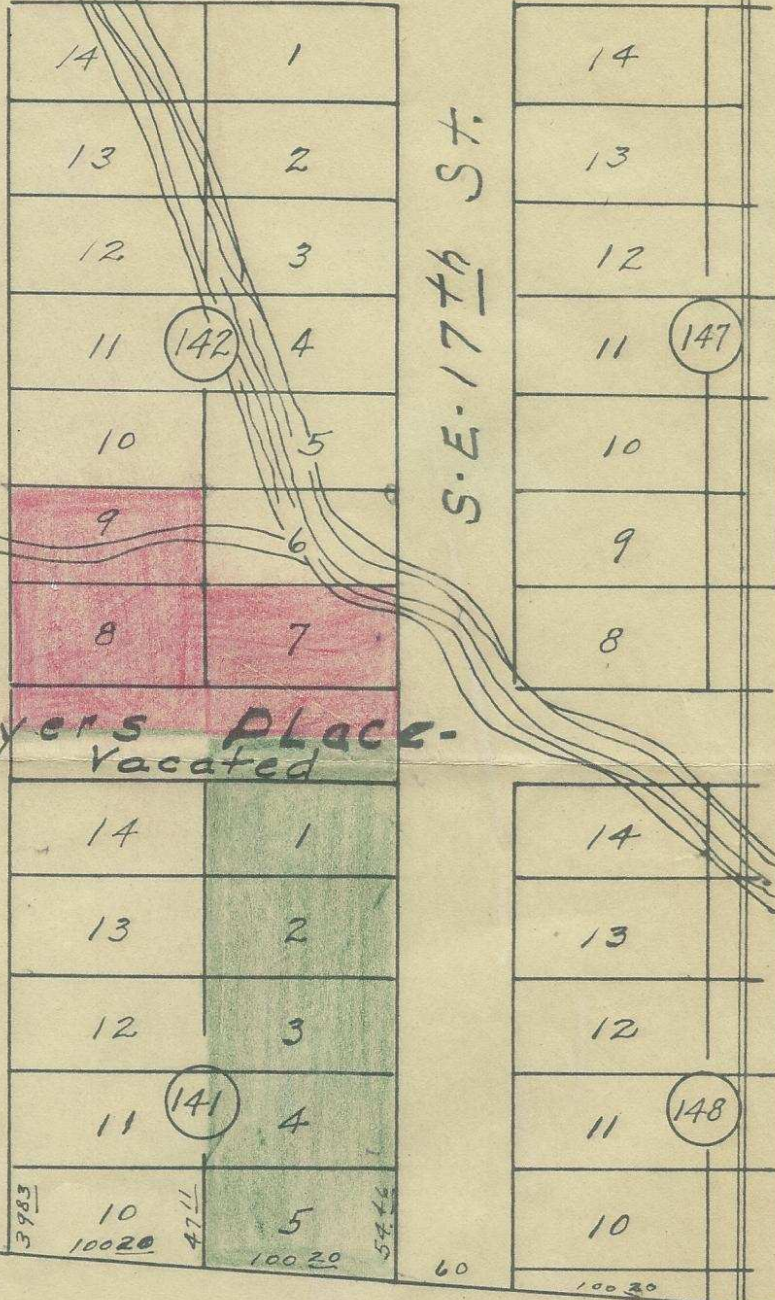
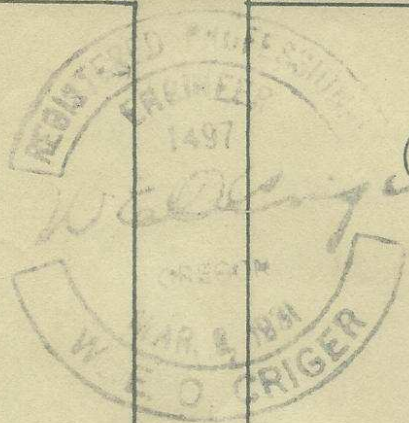
(137)
Surveyed and Platted
Sept. 23-1947 -
By W. E. O. Criger
Ore. Reg. C. E. No 1497.



S.E. 17th St.

S.E. 16th St.

S.E. Byers Place -
Vacated



S.E. Court Place

Monument No. 8

Q-121-AX