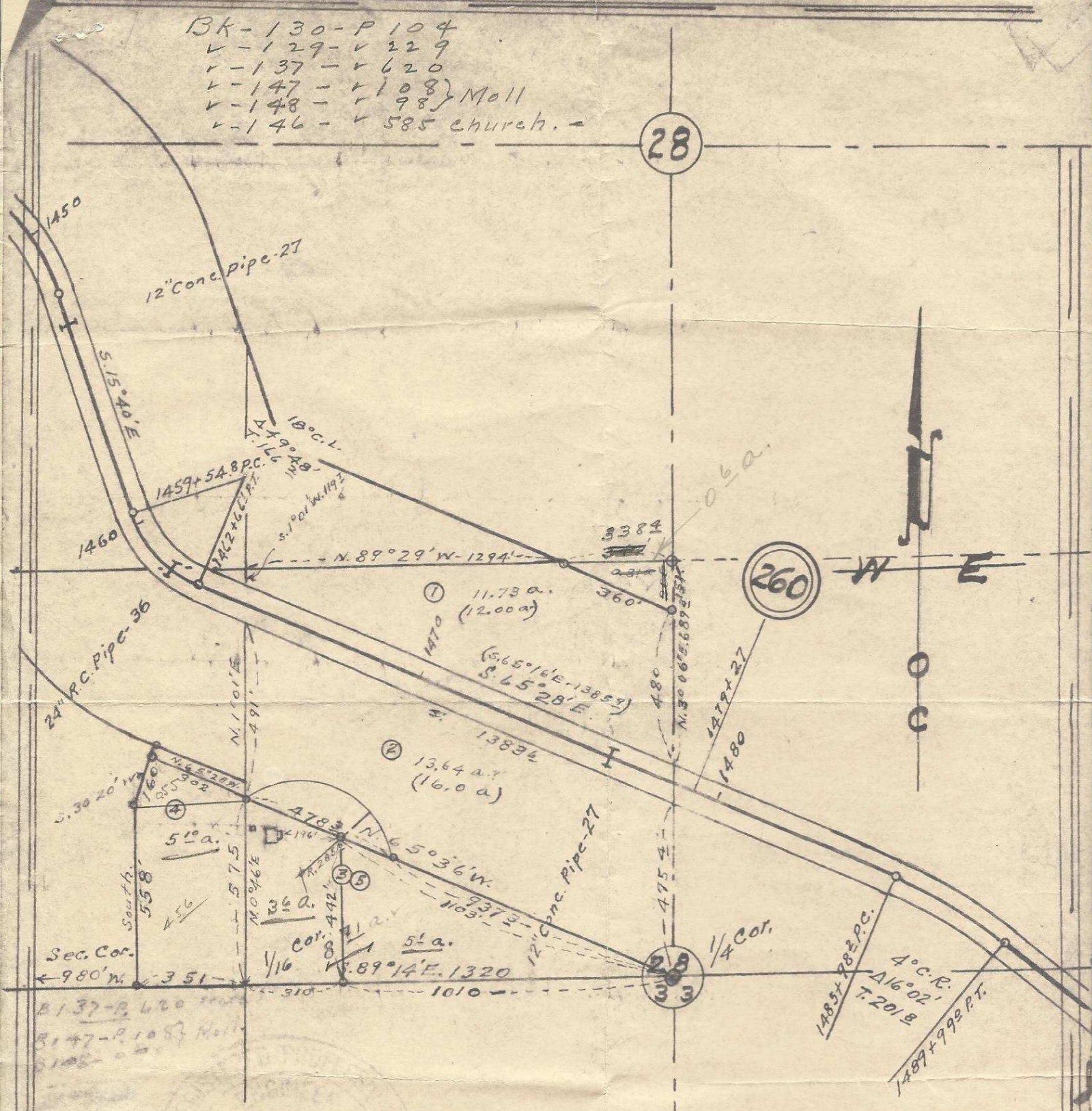


BK-130-P104
 v-129-v329
 r-137-r620
 v-147-r108 } Moll
 v-148-r98 }
 v-146-v585 church. -

28



Map showing
 Descriptive tracts in,
 S.W/4 of Sec. 28-T. 1 N., R. 35 E. W.M.
 Umatilla Co., Oregon
 surveyed, staked & platted, Aug. 1955
 By W.E.O. Criger.
 Scale: 1" = 400'

3

1001