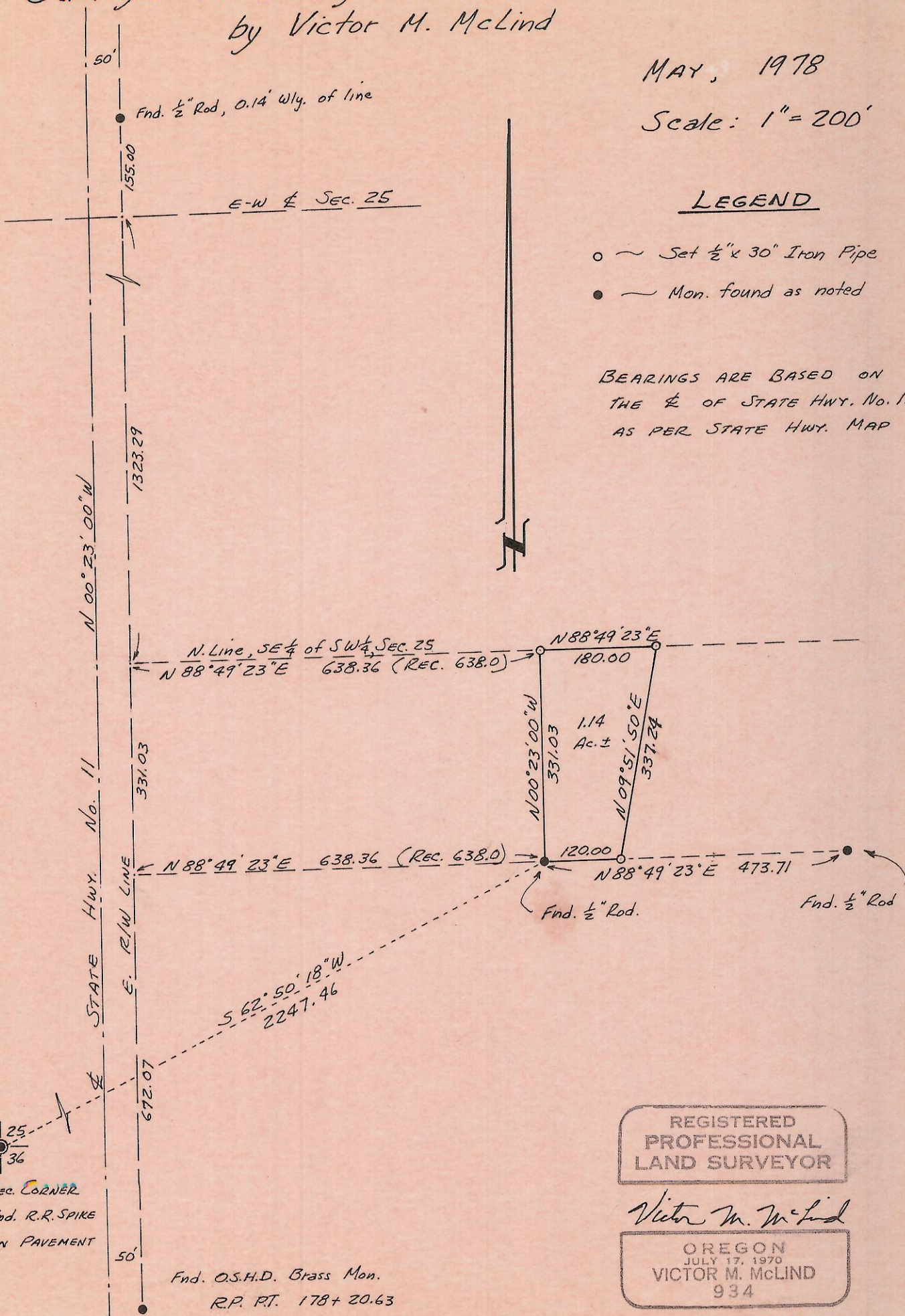


SURVEY TO SET PROPERTY CORNERS IN S.W. ¼ SEC. 25, T 6N, R 35E, W.M.

Surveyed for Ready-Mix Sand & Gravel Co., Inc.
by Victor M. McLind

MAY, 1978

Scale: 1" = 200'



REGISTERED
PROFESSIONAL
LAND SURVEYOR

Victor M. McLind

OREGON
JULY 17, 1970
VICTOR M. McLIND
934

P-4-Ax