

Sec. 24, T.6 N. R. 35E

H-101-A

13  
24  
1/4 Corner

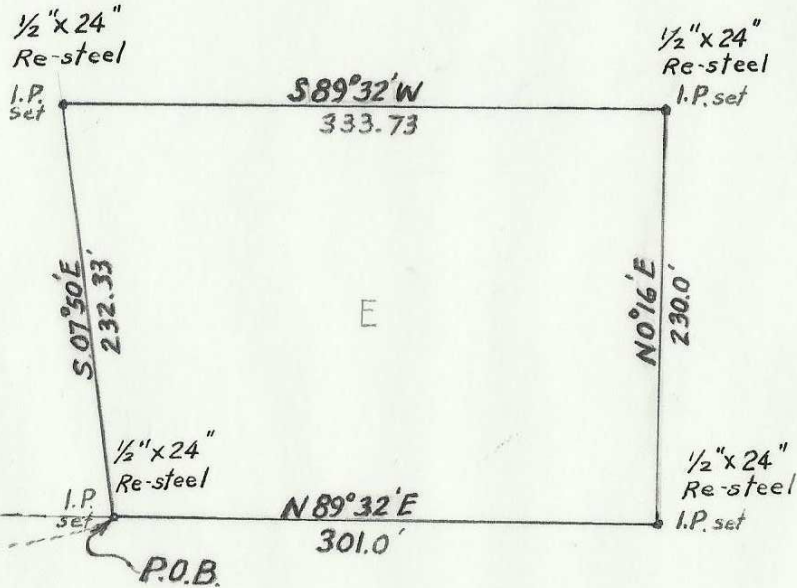
ROAD

1216.2 to 1/4 Corner  
N0°16'E

1/6 Corner

TUMALUM

BALLOU



Scale: 1" = 100'

Note: Bearings shown are based on centerline of Tumalum Road which is N0°16'E.

REGISTERED  
PROFESSIONAL  
LAND SURVEYOR

*A. J. Lommasson*

OREGON  
OCTOBER 4, 1957  
A. J. LOMMASSON  
422

ALLEN J. LOMMASSON

Registered Surveyor  
142 THORNE  
WALLA WALLA, WASHINGTON

Survey for  
JOHN R. STARLIN

4/8/72

H-101