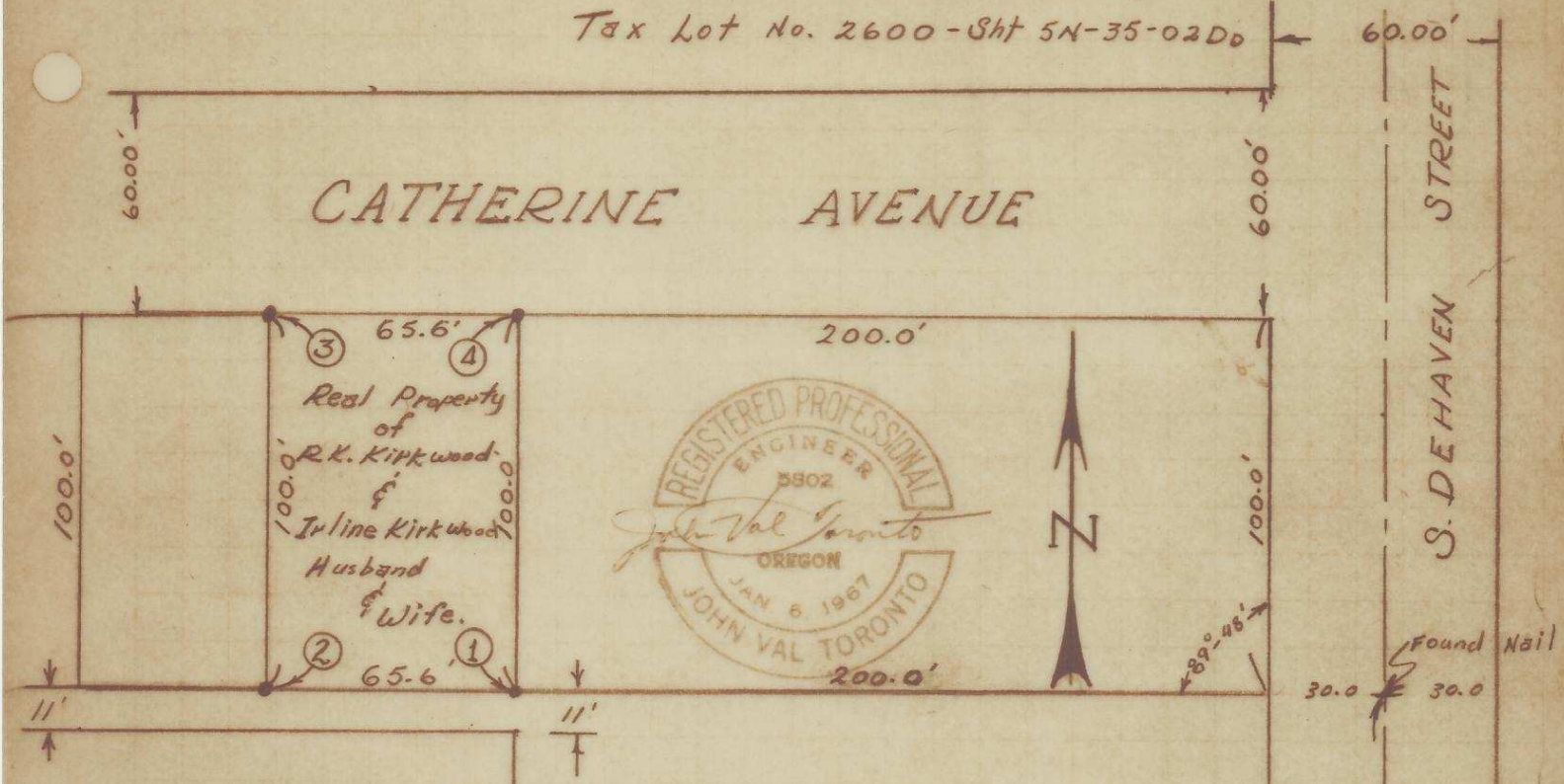




Tax Lot No. 2600-Sht 5N-35-02D0



LEGAL SURVEY

Beginning at section cor.  Twp. 5N. R. 35 E. WM.
 Thence; North 606.47' along common sect. line 1 & 2 (also the centerline of Dehaven street) to a nail marking the centerline of Dehaven street thence; West 230.0' to corner No 1 and pt. of beginning thence; continuing West on tangent 65.6' to corner No 2 thence; North 100.0' (parallel to Dehaven street) to corner No 3 thence; East 65.6' parallel to centerline of Catherine Ave. to corner No. 4 thence; South 100.0' (parallel to Dehaven street) to corner No 1 and the point of beginning of this survey description, situated in the SE 1/4, SE 1/4, Sect. 2 T. 5N. R. 35. E. WM., City of Milton-Freewater, Umatilla County, State of Oregon.

Legend: • Set steel rod 1/2" dia. x 30" long.

 Found Sect. Corner.
 (Reset By R. Thompson U.S.)

F-1-Ax



NO 5802