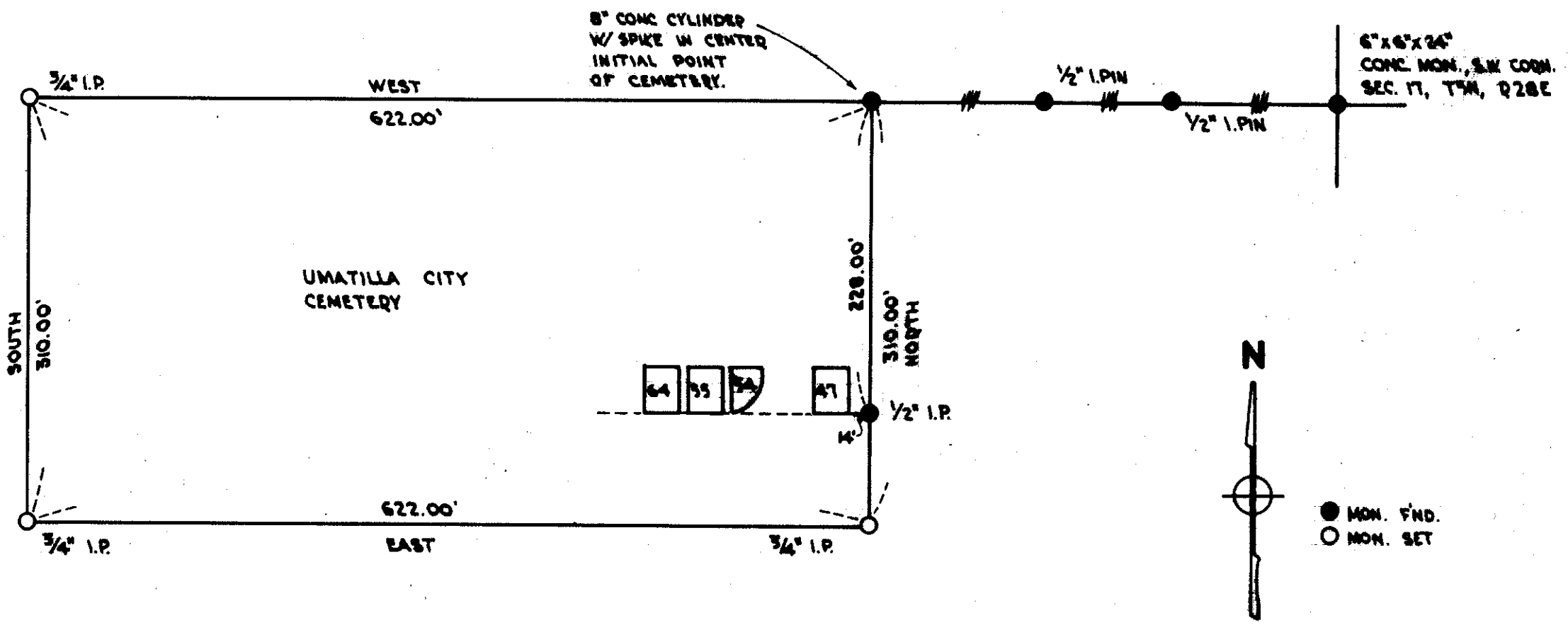


A-61-Ax



REGISTERED OREGON LAND SURVEYOR <i>August C. Giering</i> JULY 12, 1903 AUGUST C. GIERING 608	CITY OF UMATILLA BOUNDARY SURVEY of CITY CEMETERY SEC. 17, T4N, R28E, U.M., UMATILLA CO., OREG.	
	SCALE 1" = 100' REVY. G.E.S. DRAWN J.C.B. CHECKED <i>[Signature]</i>	DATE NOVEMBER 26, 1928 CLARK & GROFF ENGINEERS INC. ENGINEERING ARTS BUILDING 327 1/2 Commercial, S. E. SALEM, OREGON

A-61