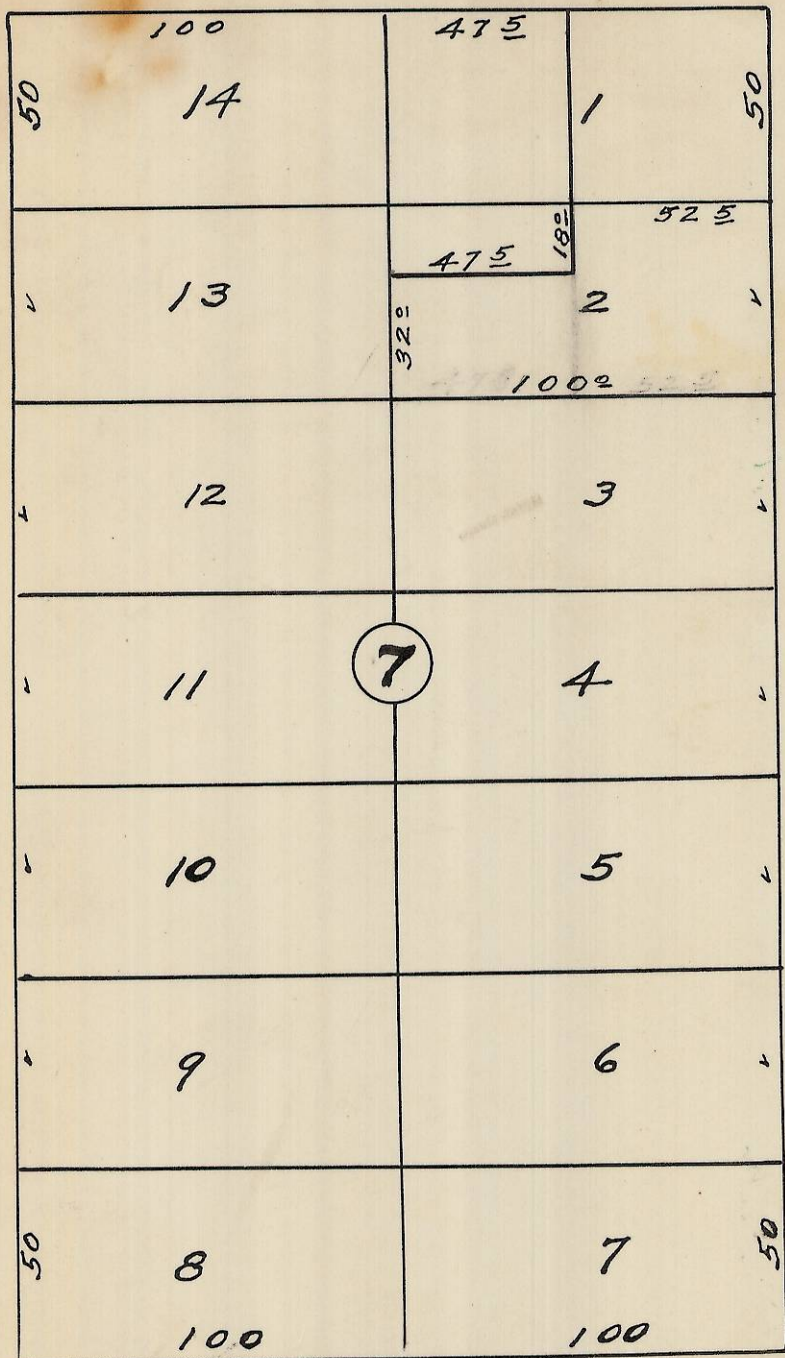


S.E. Byers Ave.

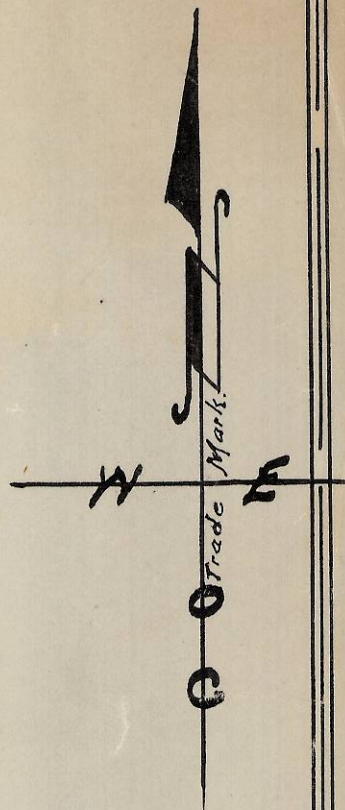
60

60



S.E. 9th Drive.

S.E. 10th St.

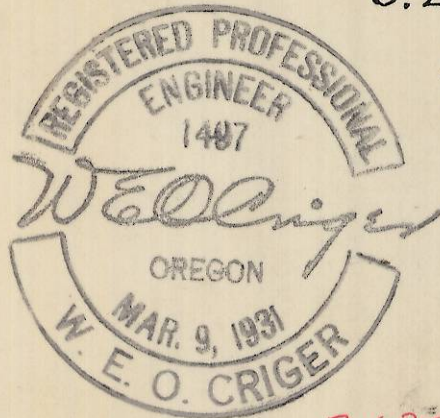


60

60

S.E. Court Ave.

(Place)



Rec'd 2/21/13
J. Nelson
13-086-Ax

Plat of
Block 7 of Reservation Addition
to the City of Pendleton, Oregon.
Surveyed, staked & platted, Aug. 1951
By W. E. O. Criger. -
Scale: 1 inch = 50 Feet.

2N3211BA

2