

Plat Showing

a descriptive tract in an unplatted area - on N.W. 8<sup>th</sup> St. and North of Gilliam Ave., City of Pendleton, Umatilla County, Oregon.

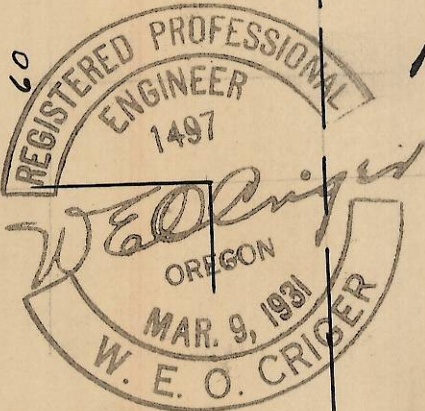
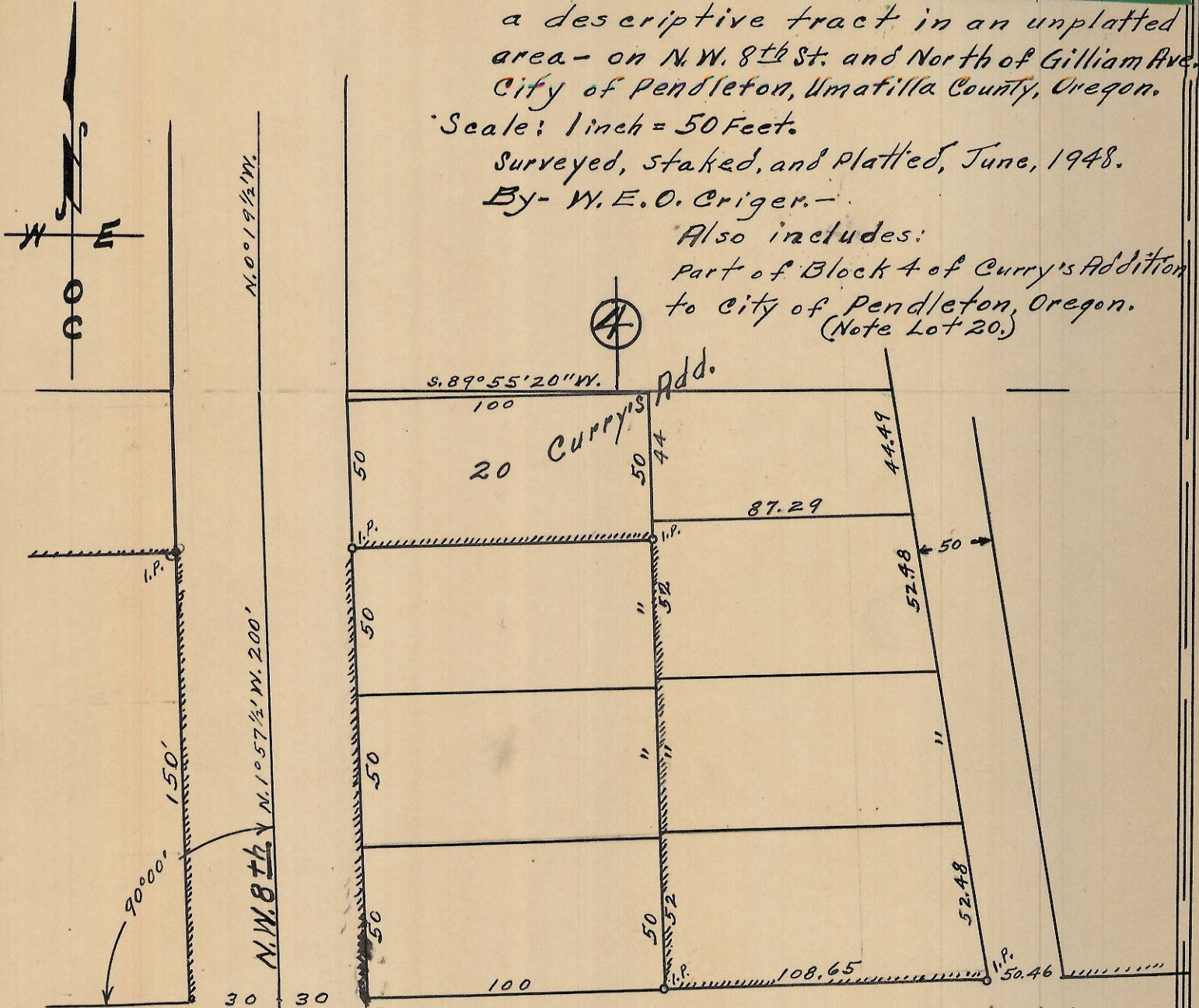
Scale: 1 inch = 50 Feet.

Surveyed, staked, and Platted, June, 1948.

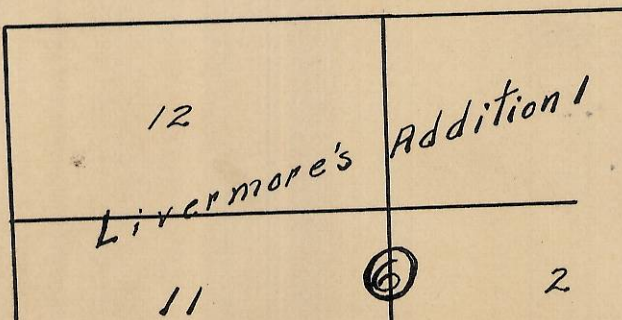
By- W. E. O. Criger.

Also includes:

Part of Block 4 of Curry's Addition to City of Pendleton, Oregon. (Note Lot 20)



N.W. GILLIAM AVE. 60



RECEIVED BY

Umatilla County Surveyor

Date: 2/21/13

Rec'd By: *[Signature]*

No.: 13-075-Ax

2N 32 03 DC