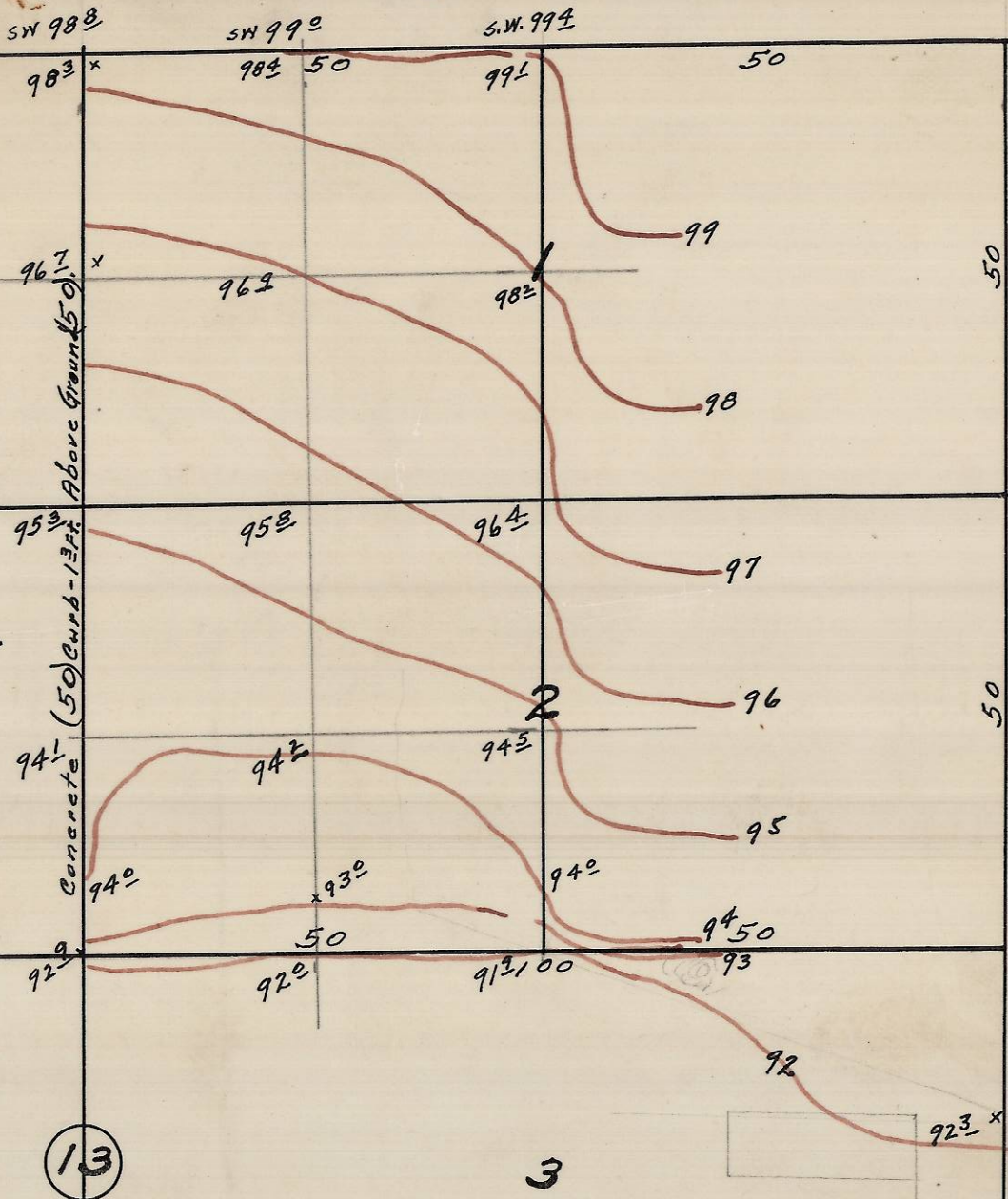


N. W. Bailey Ave.

MH-4' Deep El. 100.2



Plat of
 Portion of Block 13 of Raley's
 Addition to the town, now
 City of Pendleton, Oregon.
 surveyed, staked and platted -
 August-1949 - By W. E. O. Criger.
 Scale - 1 inch = 20 Feet.

RECEIVED BY
 Umatilla County Surveyor
 Date: 2/7/2013
 Rec'd By: S. Oles
 No.: 13-044-AX

MH-4 Ft. Deep

El. 83.4

MH to MH - 360 Ft.