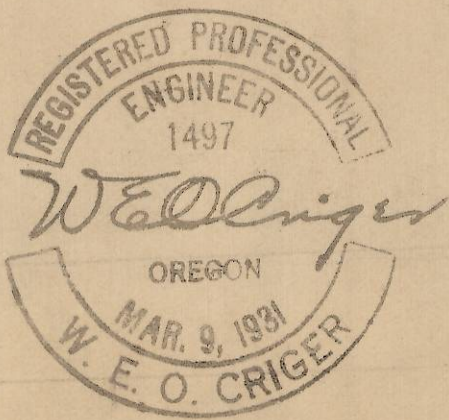
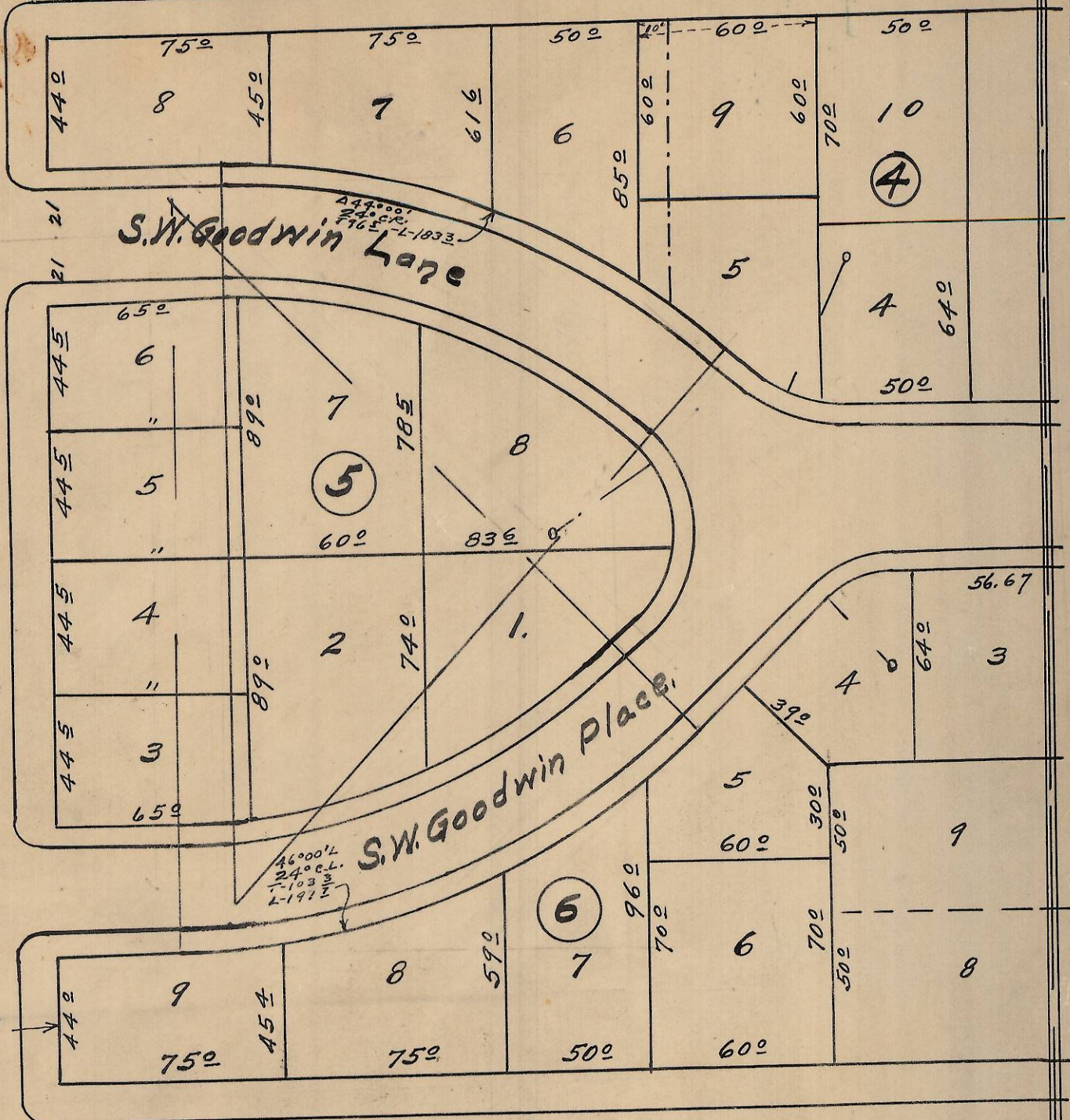


S.W. 13th St.

S.W. Goodwin Lane

S.W. Goodwin Place



Plat of Blocks 4, 5, & 6 in Part,
of Harris Heights Addition to the
City of Pendleton, Oregon.
Scale - 1 inch = 50 Feet.
Surveyed, Staked, and platted, Apr. 1948.
By W. E. O. Criger.

Rec'd by Umatilla County Surveyor
Date: 2/2/2013
by: S. Ples
No. 13-042-AX
203210C