

OUR TAPE STANDARDIZED BEFORE AND AFTER AGAINST CITY COUNTY OWNED INVAR TAPE.

MONUMENT ACCEPTED AS CORRECT

MONUMENT USED WITH CORRECTIONS APPLIED

Rock Mon.

A-A- ORIGINALLY SIGHTED AT POINT LOCATED FROM POINT ON COURT ESTABLISHED FROM EXISTING MONUMENT ON S.W. 11th & EMIGRANT

- 1) 90° 01' 30"
- 2) 180° 02' 45"
- 3) 270° 03' 30"
- 4) 360° 04' 45"

AVERAGE: 90° 01' 11"

Then E. of Emigrant checked from City Established Line for N.W. Cor. of Reservation Addn. Reference point for this line set near highway conc islands.

Line produced from this point to main fell 0.2 North of point set for above. AN ANGULAR CORRECTION FOR THIS LINE WHICH IS ACCEPTED BY THE CITY IS AS FOLLOWS.

90° 01' 11" - ORIGINAL
 - 0° 00' 25" - Corr
 90° 00' 46" - Corrected

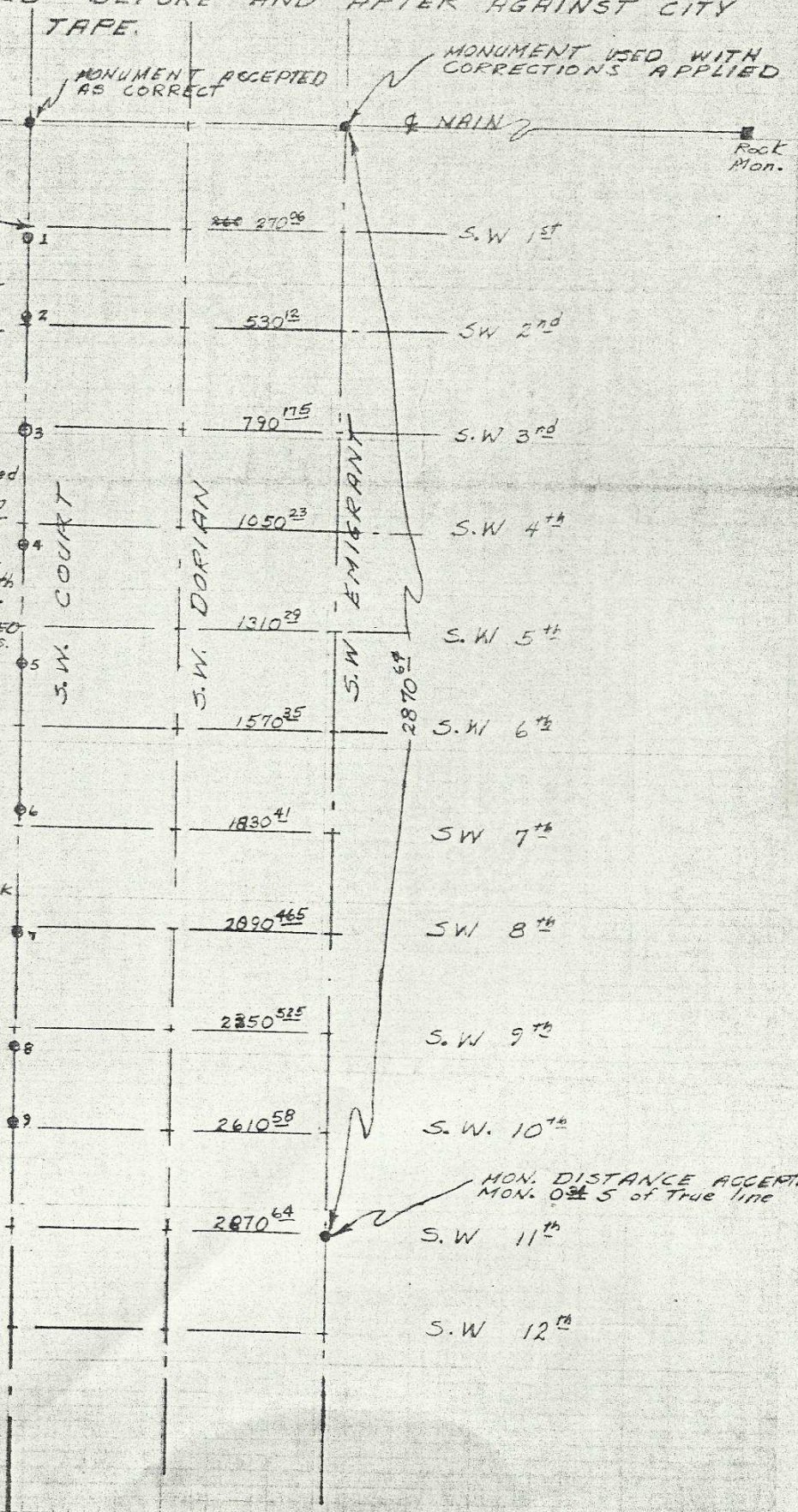
Distance Correction to be APPLIED TO EACH BLOCK.

Error = 0.6"
 Error/BLOCK = 0.6"/11
 = 0.0582 ft/block

FOR DIST ONLY

Conc Nail Number	STATION	Position or Nail
1	300 ⁰⁰	West 1/3
2	499 ⁰⁰	Center
3	799 ⁰⁰	West 1/3
4	1099 ⁰⁰	Center
5	1399 ⁰⁰	West 1/3
6	1800 ⁰⁰	Center
7	2100 ⁰⁰	East 1/3
8	2400 ⁰⁰	Center
9	2600 ⁰⁰	East Edge

Note: Nail #9 0.42 South of true Line



WORK PERFORMED ON: MARCH 14 & 15, 1959
PARTY CONSISTED OF: STANLEY G. WALLULIS
CHARLES EDDLEMAN
GLEN WEST

CHAINING WORK WAS DONE DURING EARLY MORNING HOURS WITH MAXIMUM TEMPERATURE VARIATION OF 3° ~~Celsius~~ Fahrenheit. WORK WAS DOUBLE CHAINED WITH TENSION SPRING

LINE DOWN COURT WAS ACCEPTED AS INDICATED BECAUSE OF EXTENSIVE WORK DONE BY THE CITY THAT IS IN AGREEMENT WITH KNOWN MAPS AND RECORDS.

ACCEPTANCE OF MONUMENT AT S.W. 11th & EMIGRANT FOR DISTANCE WAS BASED ON THE FACT THAT PAST SURVEY HAVE SHOWN AN ERROR OF 0.67 FEET ADDITIONAL BETWEEN MAIN AND S.W. 20th (CITY MONUMENTS) ON S.W. COURT AVE. THE LOCATION OF THIS MONUMENT AT S.W. 11th & EMIGRANT IS PRESUMED RESPONSIBLE FOR THIS OVERALL ADDITIONAL DISTANCE AND THE AREA BETWEEN THIS MONUMENT AND MAIN HAS HAD THE ERROR PRO-RATED AS SHOWN ON SHEET ONE.



Stanley G. Wallulis

PROFESSIONAL CONSULTING ENGINEER
MAR. 16, 1959

Charles Alan Eddleman

ASSISTANT CITY ENGINEER
MAR. 16, 1959

Gerald W. Zlett

APPROVED FOR MONUMENTING
PURPOSES FOR CITY OF PENDLETON, ORE.
BY: CITY ENGINEER
DATE: MAR. 16, 1959

RECEIVED BY

Umatilla County Surveyor
Date: 4/19/2012
Rec'd By: S. Olin
No.: 12-055 - AY