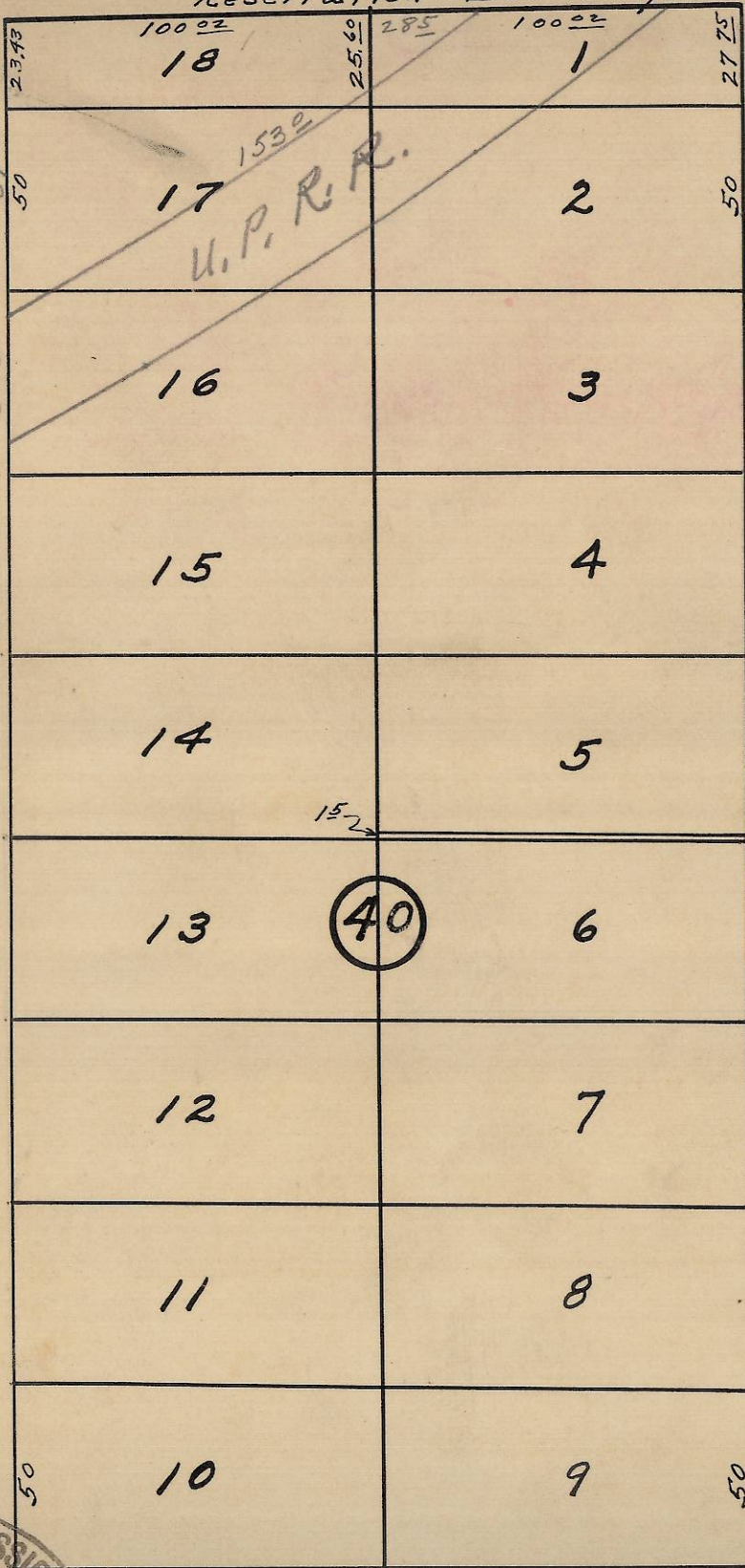


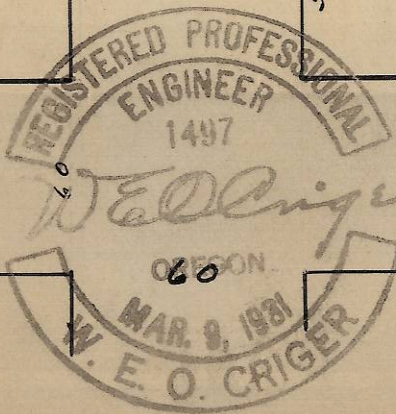
Reservation Boundary.



S.W. 20th St.

S.W. 19th St.

Plat of
 Block 40 of
 Reservation Addition
 to the town, now City
 of Pendleton, Oregon.
 Scale: 1 inch = 50 Ft.,
 Surveyed, staked & platted,
 Nov. 1948 - By - W.E.O. Criger.



S.W. Emigrant Ave.

06-355-AX