

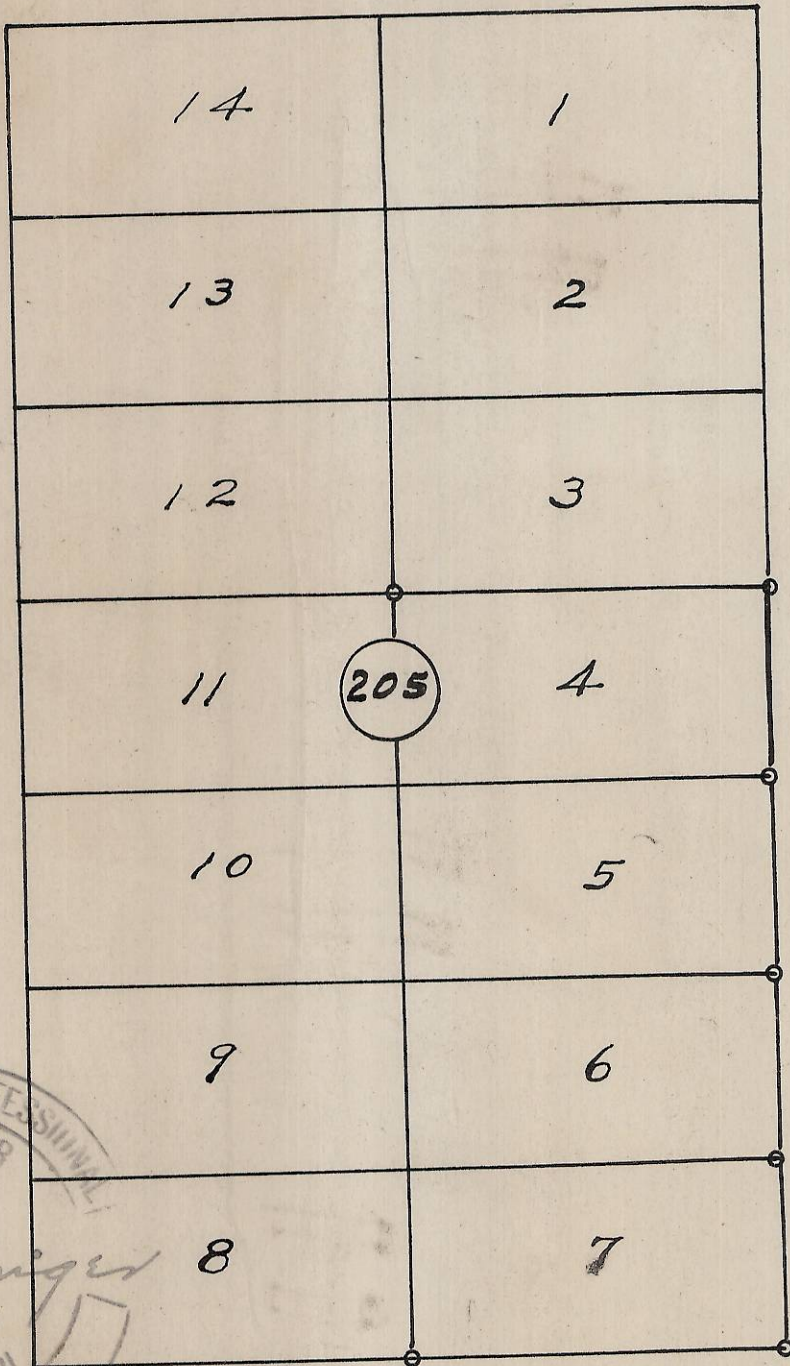
60

60

60

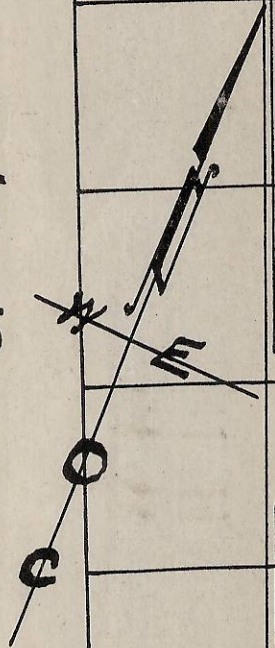
S.W. Hayley Ave.

60



S.W. 20th St.

S.W. 19th St.



60

60

S.W. Isaac Ave.

06-350-AX

60

Scale: 1" = 100'



Plat showing
 Block 205 of Reservation Added
 to the City of Pendleton, Ore.
 Surveyed, staked & platted
 Nov. - 1957 by W. E. O. Criger

Ralph E. Lowry -