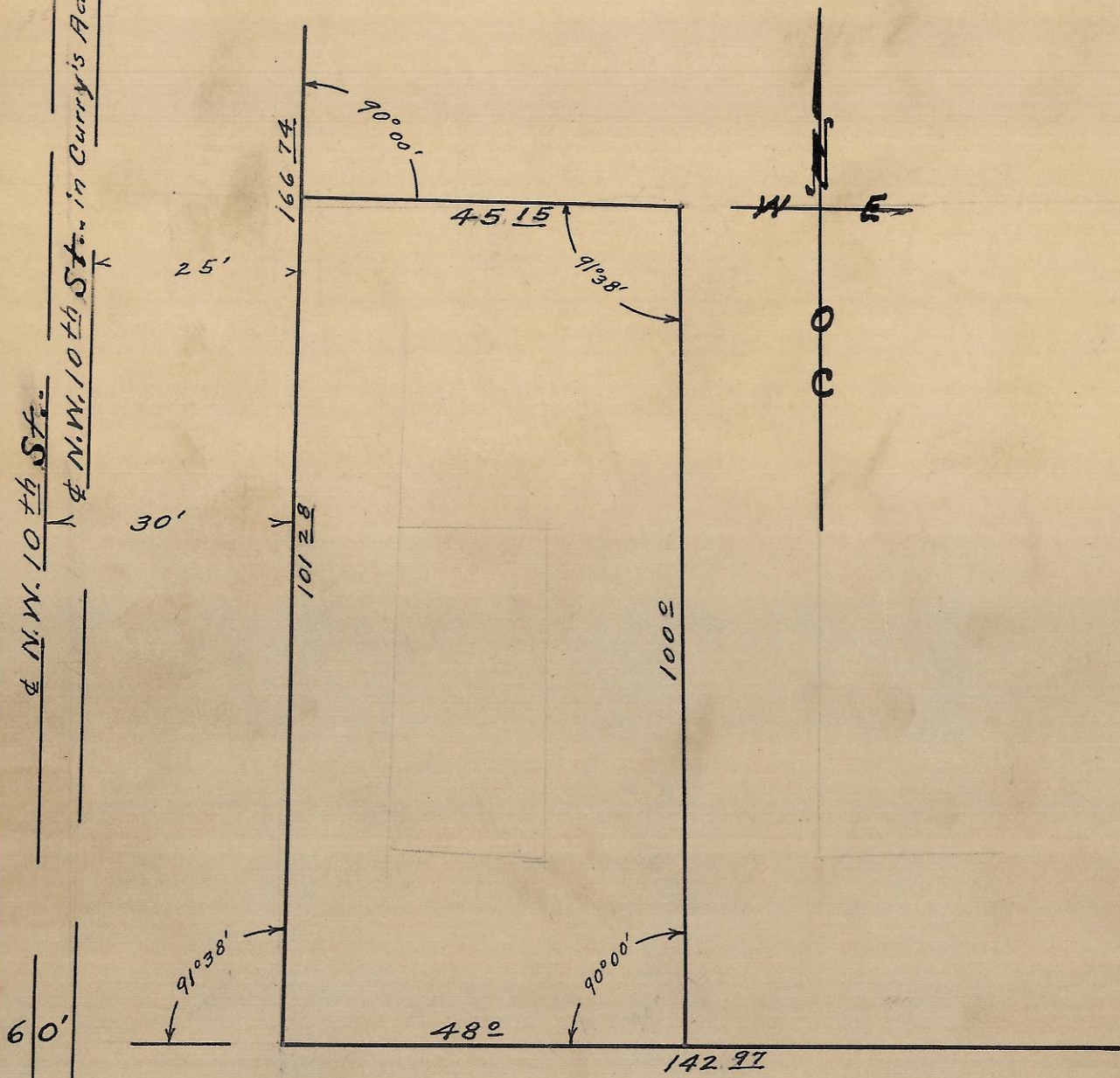


& N.W. 10th St.
 & N.W. 10th St. in Curry's Add.



N.W. Gilliam Ave.

06-328-AX



Plat of descriptive tract
 Lying East of N.W. 10th St., and North of
 N.W. Gilliam Ave., in an unplatted area
 Located in the S.W. 1/4 of S.E. 1/4 Sec. 3,
 T. 2. N., R. 32 E. W. M. Pendleton, Ore.
 Surveyed, staked and platted, Oct. 1948.
 By W. E. O. Criger. For Richard G. Williamson.
 Scale: 1 inch = 20 Feet.