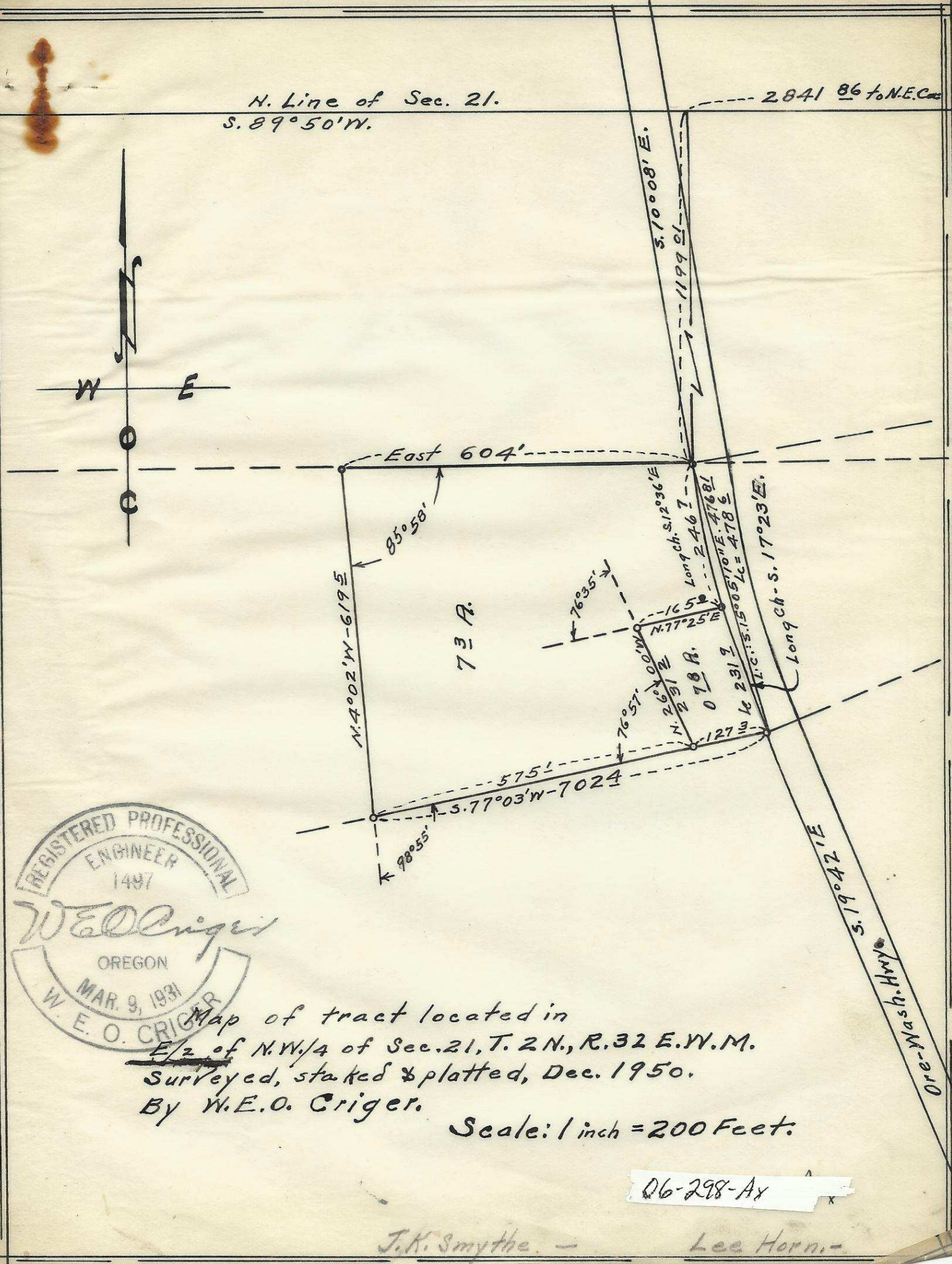
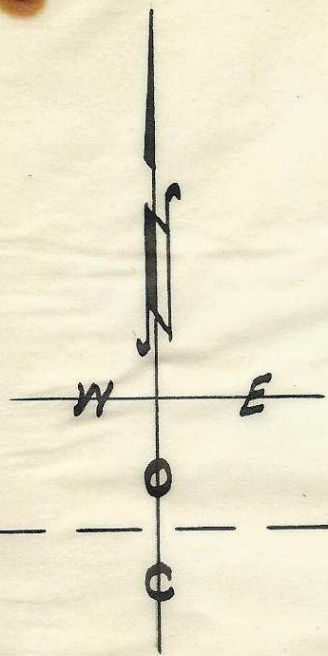


N. Line of Sec. 21.  
S. 89° 50' W.

2841 86 to N.E. Cor



73 A.

78 A.



Map of tract located in  
E/2 of N.W. 1/4 of Sec. 21, T. 2 N., R. 32 E. W. M.  
Surveyed, staked & platted, Dec. 1950.  
By W. E. O. Criger.

Scale: 1 inch = 200 Feet.

06-298-Ax

J. K. Smythe.

Lee Horn.