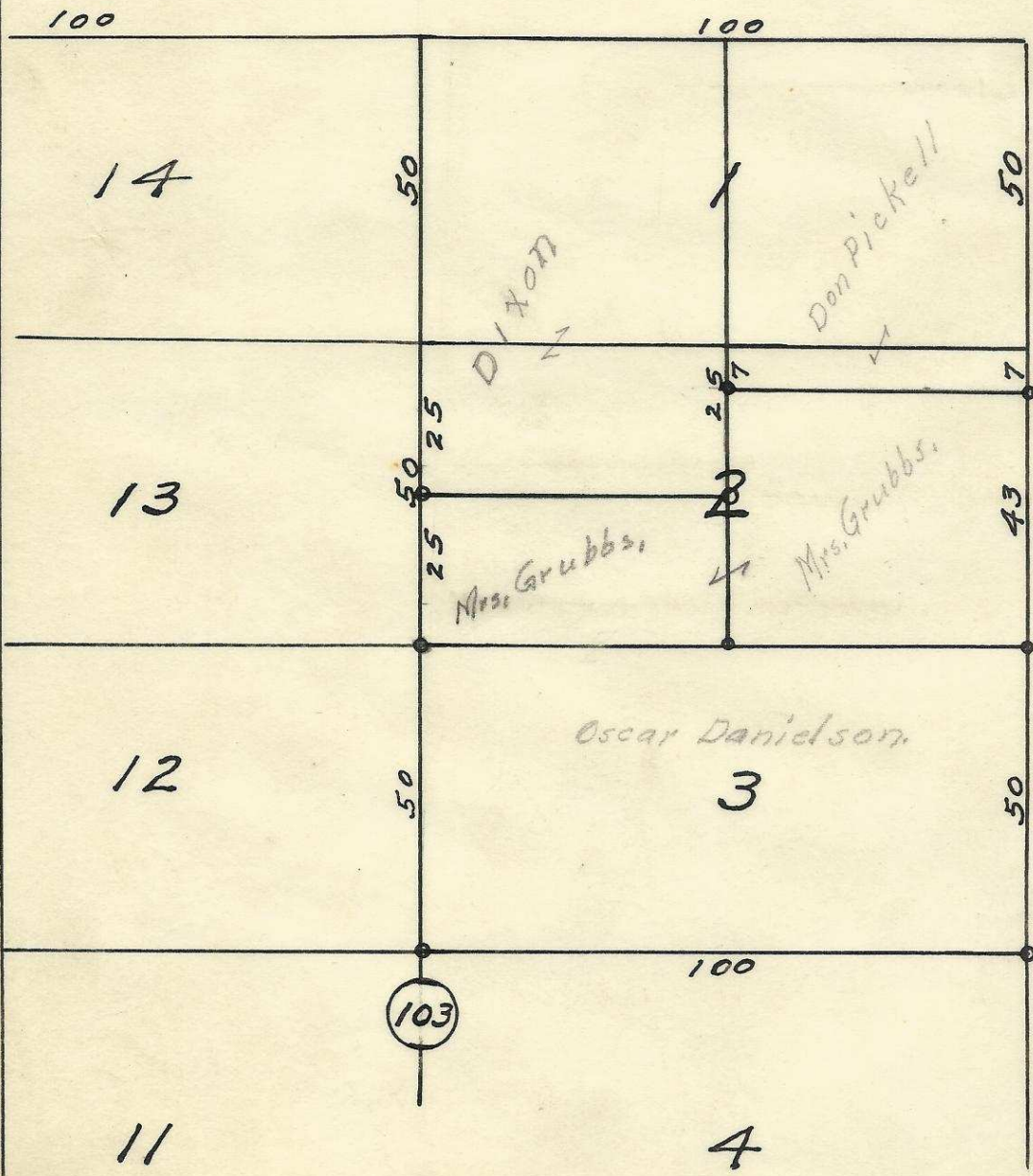
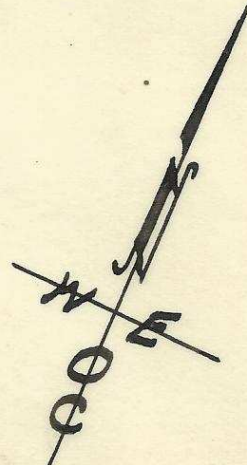




**S. W. Frazier Ave.**



Plat of Lots 1, 2, & 3  
Block 103 of  
Reservation Addition  
to the town, now City  
of Pendleton, Oregon.  
Surveyed, staked and  
platted, Sept. 1950  
By W. E. O. Criger.  
Scale: 1 inch = 30 ft.

**S. W. 13<sup>th</sup> St.**

2032 10 CA

06-290-Ax