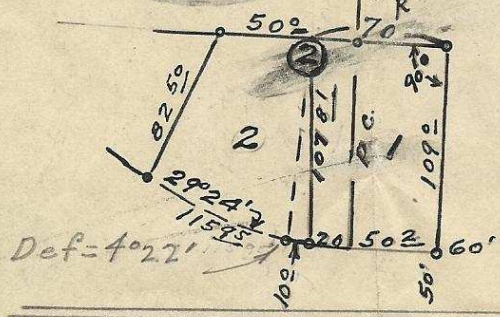


$\Delta = 49^{\circ} 00'$
 $R = 194.3$ on P.L.



T2N 32 03 CA
 Plat of
 Part of block 2 of 06-284-Ax
 West Hills Addition
 To the City of Pendleton, Oregon.
 Surveyed, staked and plotted Aug. 1951 -
 By W. E. O. Criger - Scale: 1" = 50'