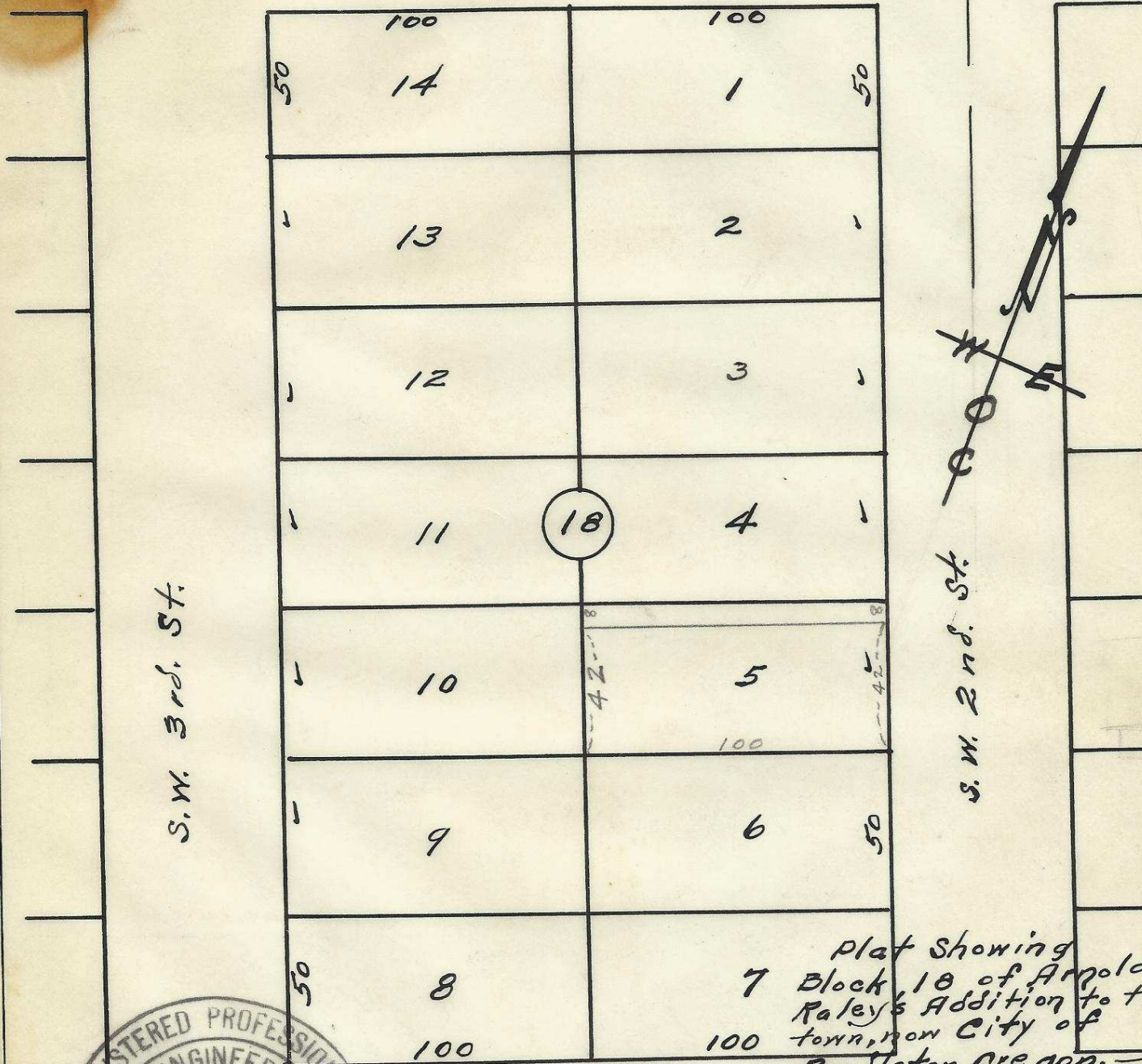


60

60

S. W. Court Ave.



S. W. 3rd St.

S. W. 2nd St.

Plat Showing
 7 Block 18 of Arnold's
 Raley's Addition to the
 town, now City of
 Pendleton Oregon.
 Surveyed, Staked and Platted - May, 1949
 By W. E. O. Criger -
 Scale: 1" = 50 Feet.



S. W. Dorion Ave.

2N32 10AA

06-257-Ax

Jassman