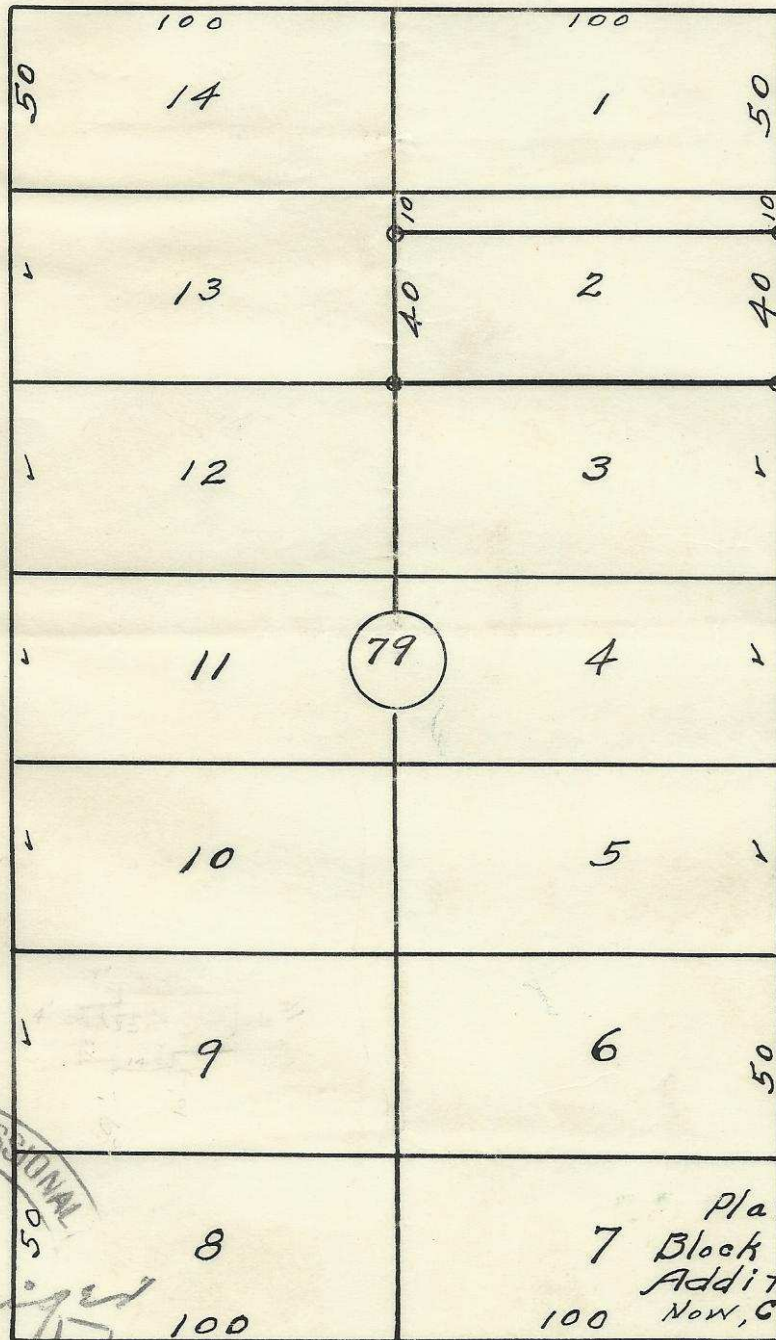


60'

60

S. W. Emigrant Ave.

60'



S.W. 7th St.

S.W. 6th St.



2N32 10 AD

S.W. Frazier Ave.

Plat Showing
 7 Block 79 of Reservation
 Addition to the town,
 Now, City of Pendleton,
 Oregon - 60
 Surveyed, staked & platted
 August 1952 - By W. E. O. Criger
 Scale: 1 inch = 50 Ft.

06252-Ax 60

4