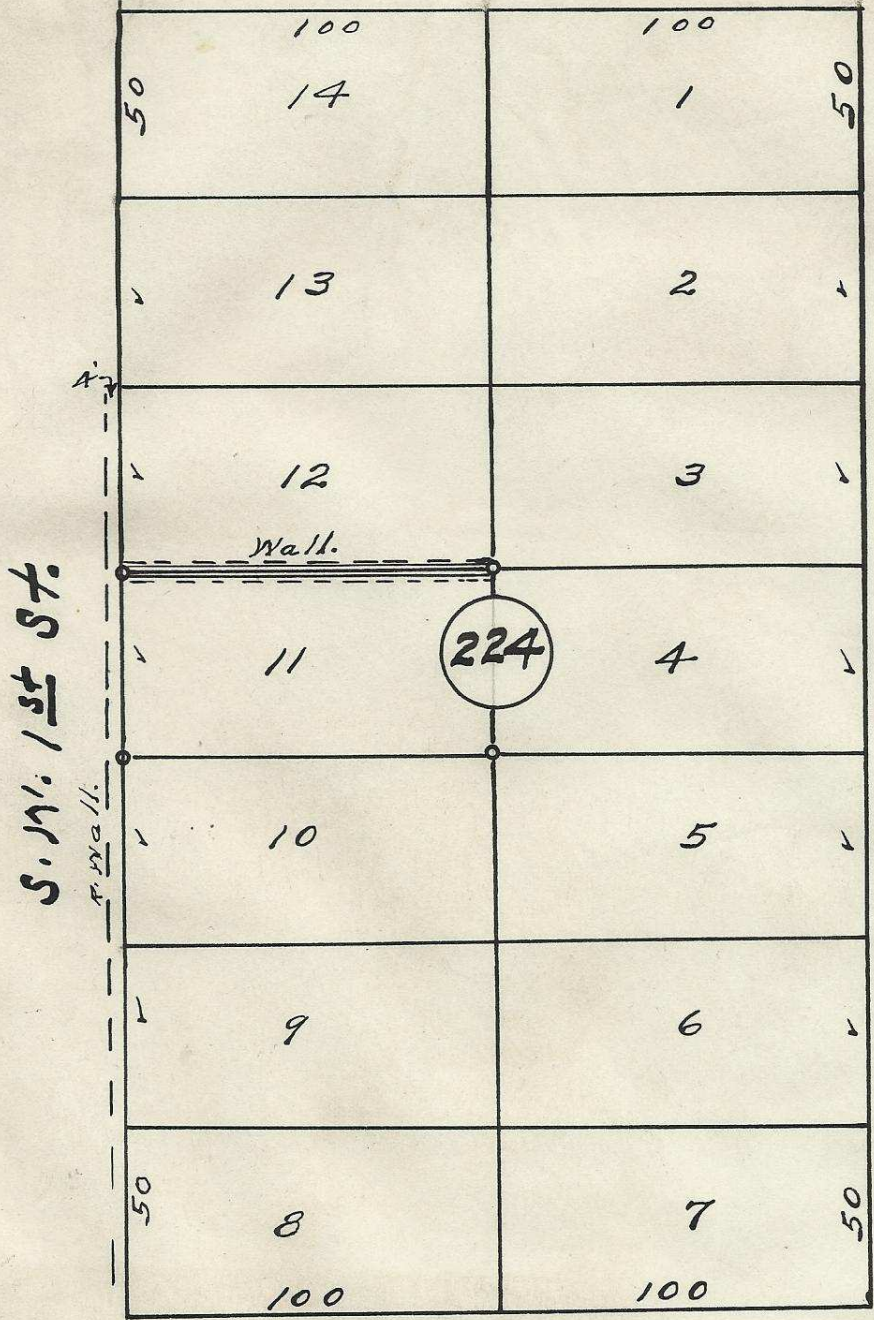


S.W. Hailey Ave.



S.W. 1st St.

South Main St.

S.W. Isaac Ave.

2N32 11 CB

plat of  
Block 224 of Reservation Addition  
to City of Pendleton, Oregon -  
Surveyed, staked & platted,  
By - W. E. O. Criger -

06-242-Ax

Scale: 1 inch = 50 Feet.

5