

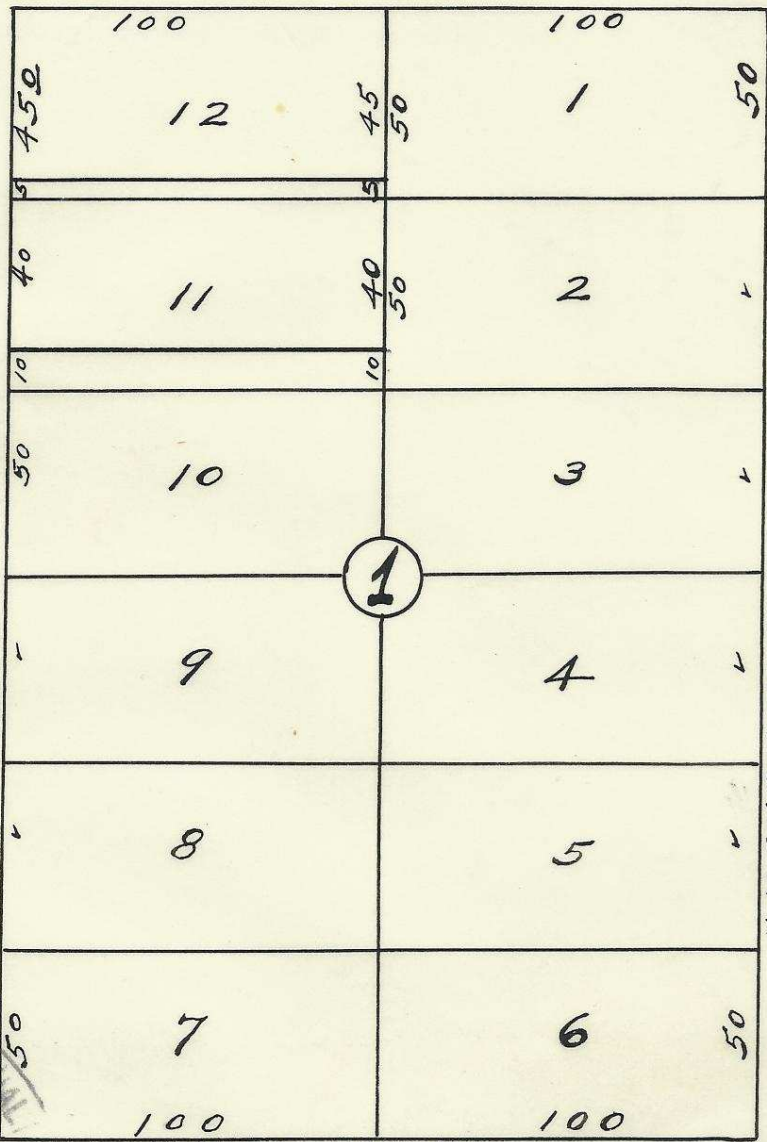
60

80

N.W. Horn Ave.

60

60

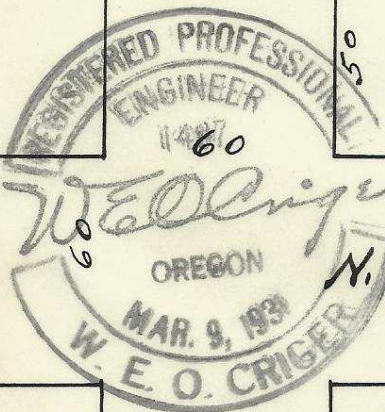


N.W. 3rd St.

N. Main St.

N. 10° 57' 30" W.

N. 88° 02' 30" E



N.W. Gilliam Ave.

2N 32 3DD

Plat of
 Block 1 of Livermore's 2nd Addition
 to the town, now City, of
 Pendleton, Oregon.
 Surveyed, staked, and platted
 July - 1951 - By W. E. O. Criger.
 Scale: 1 inch = 50 Feet.

06-209-Ax

Ed Redfield, U.S.S.