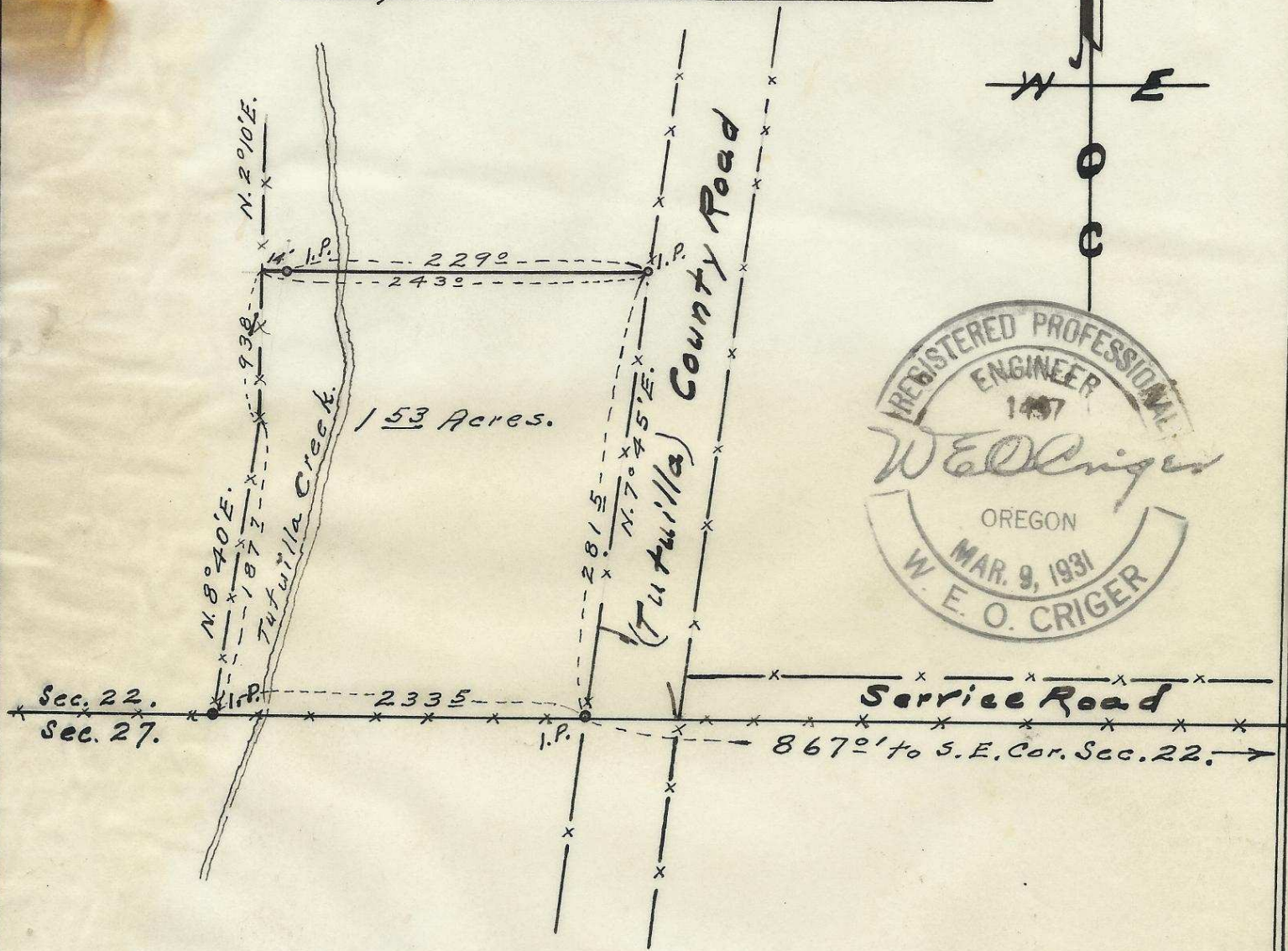


S. E/4 Sec. 22 - T. 2 N., R. 32 E. W. M.



153 Acres.



Map showing  
Descriptive tract located in  
S.E/4 of Sec. 22 T 2 N., R. 32 E. W. M.  
Surveyed, staked & platted Apr. 28-1955  
By W. E. O. Criger.  
Scale: 1 inch = 100 Feet.

06-149-Ax