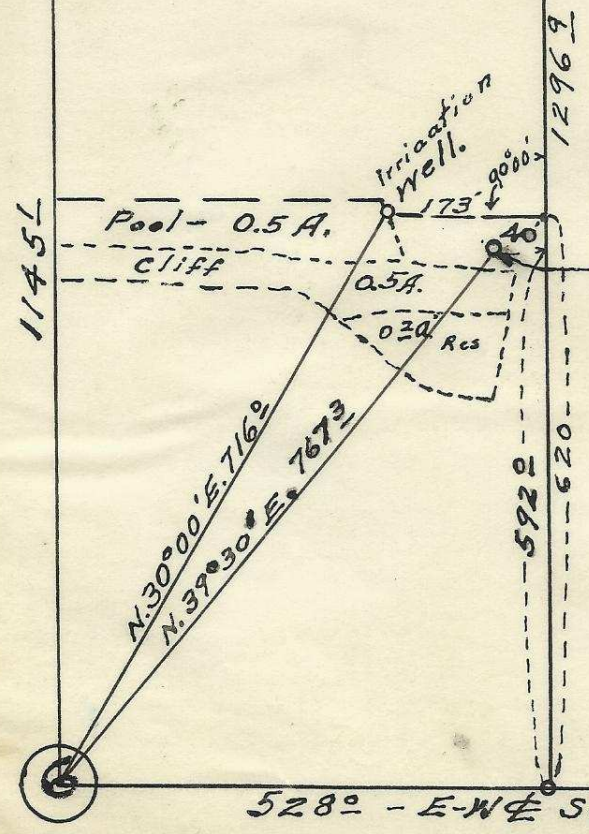


Total = 14.05 A.
Irrigable Area = 11.77

Plat showing
Tract in N.E. 1/4 of Sec. 6-T.2 N.,
R. 30 E.W.M.
surveyed, staked & platted Feb. 1948
✓ ✓ ✓ Sept. 1951
By W. E. O. Criger.
Scale: 1 inch = 200 Feet.



Well for Domestic Use Only.

For Carl C. CROWNER and
Wilda Mae CROWNER.

06-136-Ax