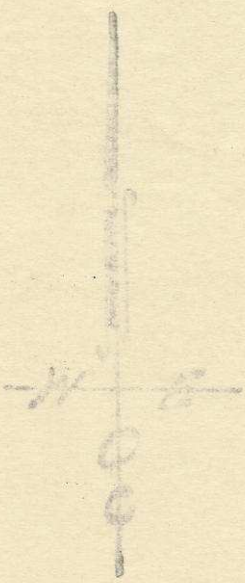
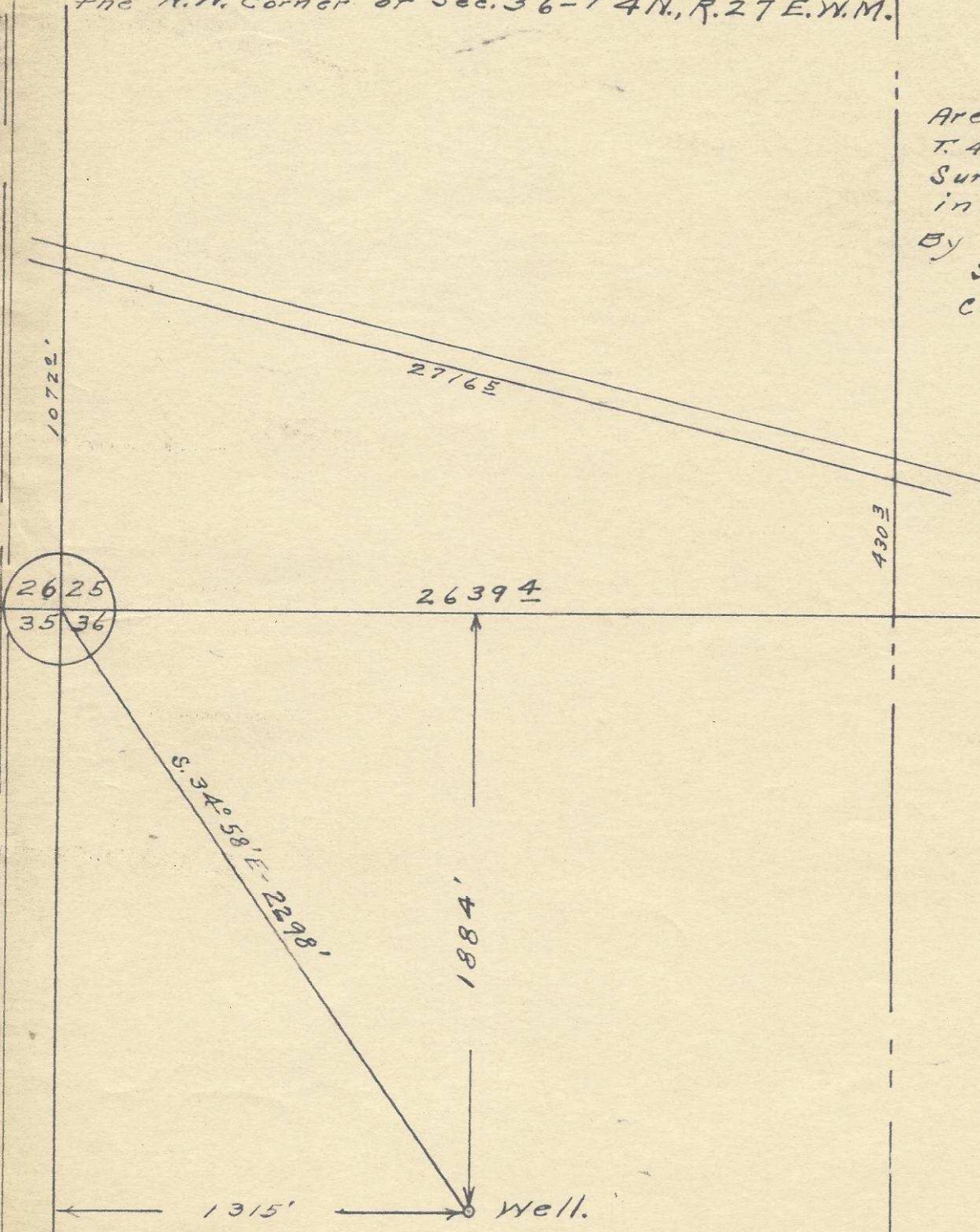


I, H.L. Melton of LaGrande Oregon do hereby certify that this map was made from notes taken during an actual survey made by me in June 1954; that the monument shown on this map consisting of an iron pipe 36" Long and the top of which is 6 inches above the ground Bears S. 34° 58' E - 2298" from the N.W. Corner of Sec. 36 - T. 4 N., R. 27 E. W. M.

Map of
 Areas in Secs. 25-26-35-36
 T. 4 N., R. 27 E. W. M.
 Surveyed & staked
 in June 1954 -
 By H.L. Melton -
 Scale: 1" = 500'
 Const. = 574 @ 11"



06-124-Ax

For H.L. Melton - J.A. Hackett, - McNary, - 7/8/1954