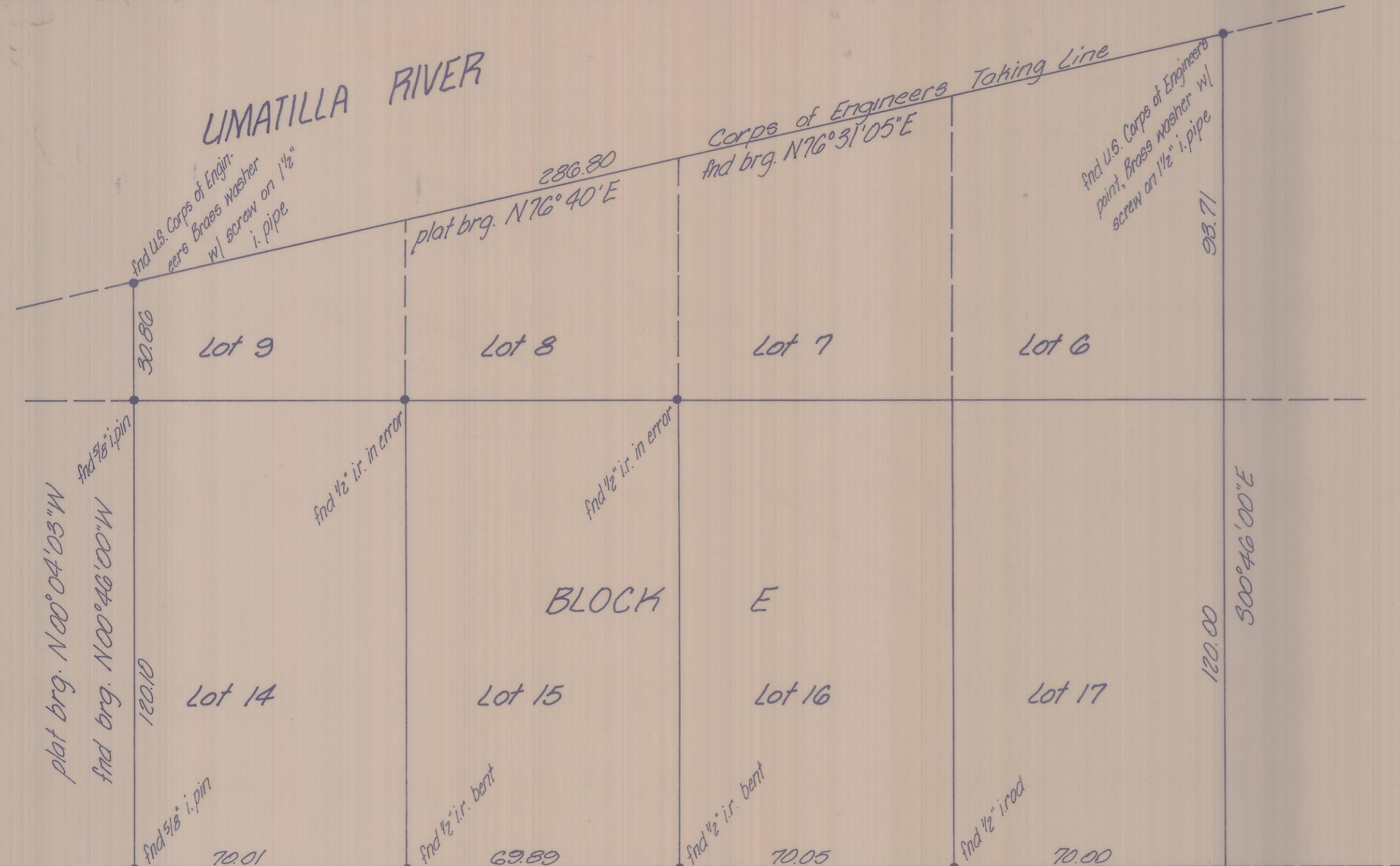


UMATILLA RIVER



Bearings are based on the Original Plat of Carelle Addition

• denotes monument find as noted

RECEIVED BY
David H. Wilson
 Umatilla County Surveyor
 Date 3-81
 rec'd - y BLS
 l.o. B-A-A 107

S-107-A

KRUMBEIN ENGINEERING CO. ENGINEERS - SURVEYORS - PLANNERS 221 S. Main, Pendleton, Oregon	SCALE 1" = 30'
	DATE 11-6-80
Survey for BEATRICE WINGET Carelle Addition, Sec. 17, T5N, R28E, W.M.	
DRN BY M.L.J.	DRNG NO. 80-19B
CKD BY D.H.H.	

S-2-A S-107-A
 Job No. 80-174