

MAP 15 BC

50' X 100' LOT & WATER LINES

IN S.W. 1/4 of N.W. 1/4 of SEC. 15, T. 5 N., R. 28 E., W.M.

SCALE: 1" = 200'

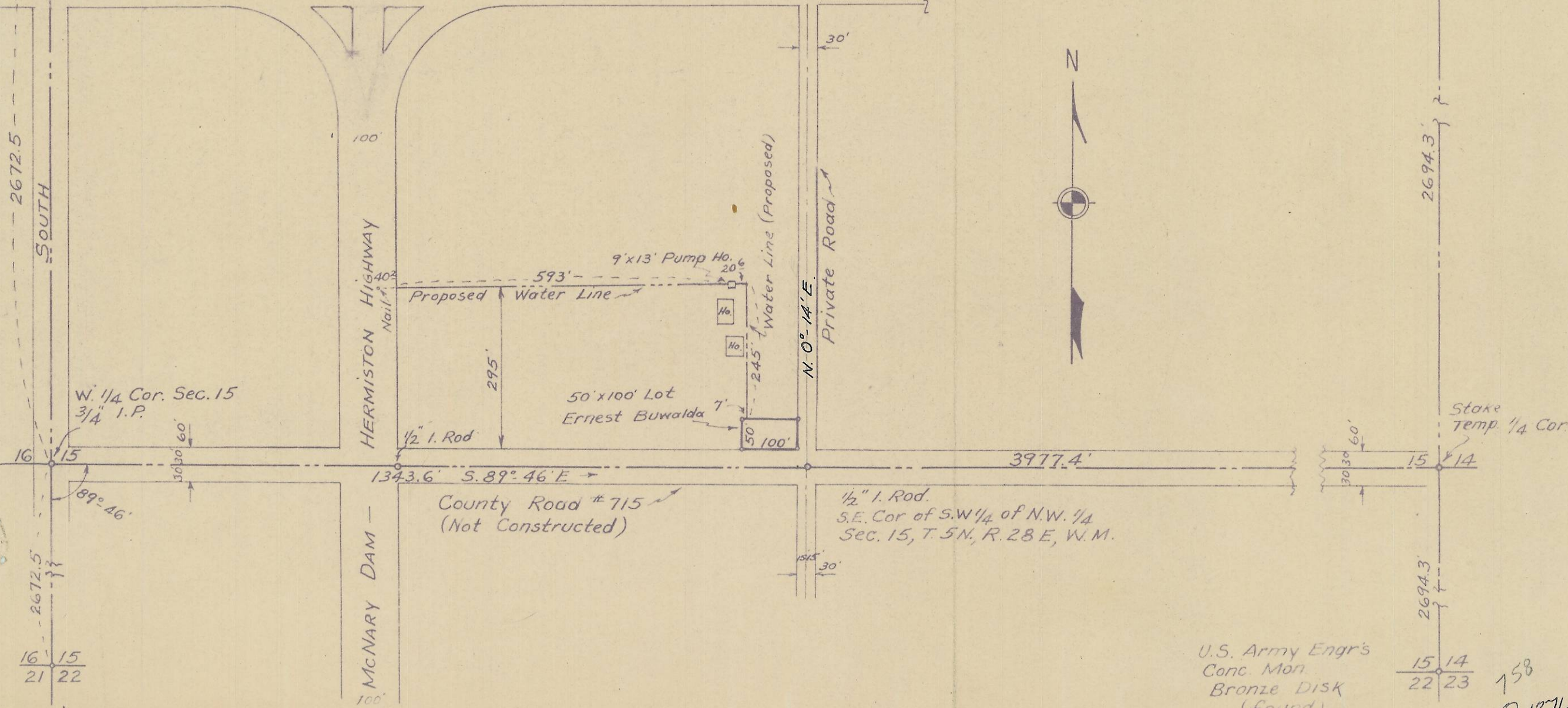
10 11
Steel Axle 15 14

9 10
16 15
U.S. Army Engr's
Conc. Mon.
Bronze Disk (found)

Army Engr's Conc. Mon.
State Hwy. R/W (found)

Void

U.S. Hwy. #730



W. 1/4 Cor. Sec. 15
3/4 I.P.

50' x 100' Lot
Ernest Buwalda

1/2" I. Rod.
S.E. Cor of S.W. 1/4 of N.W. 1/4
Sec. 15, T. 5 N., R. 28 E., W.M.

County Road #715
(Not Constructed)

U.S. Army Engr's
Conc. Mon.
Bronze Disk
(found)

158
Q-1271-A