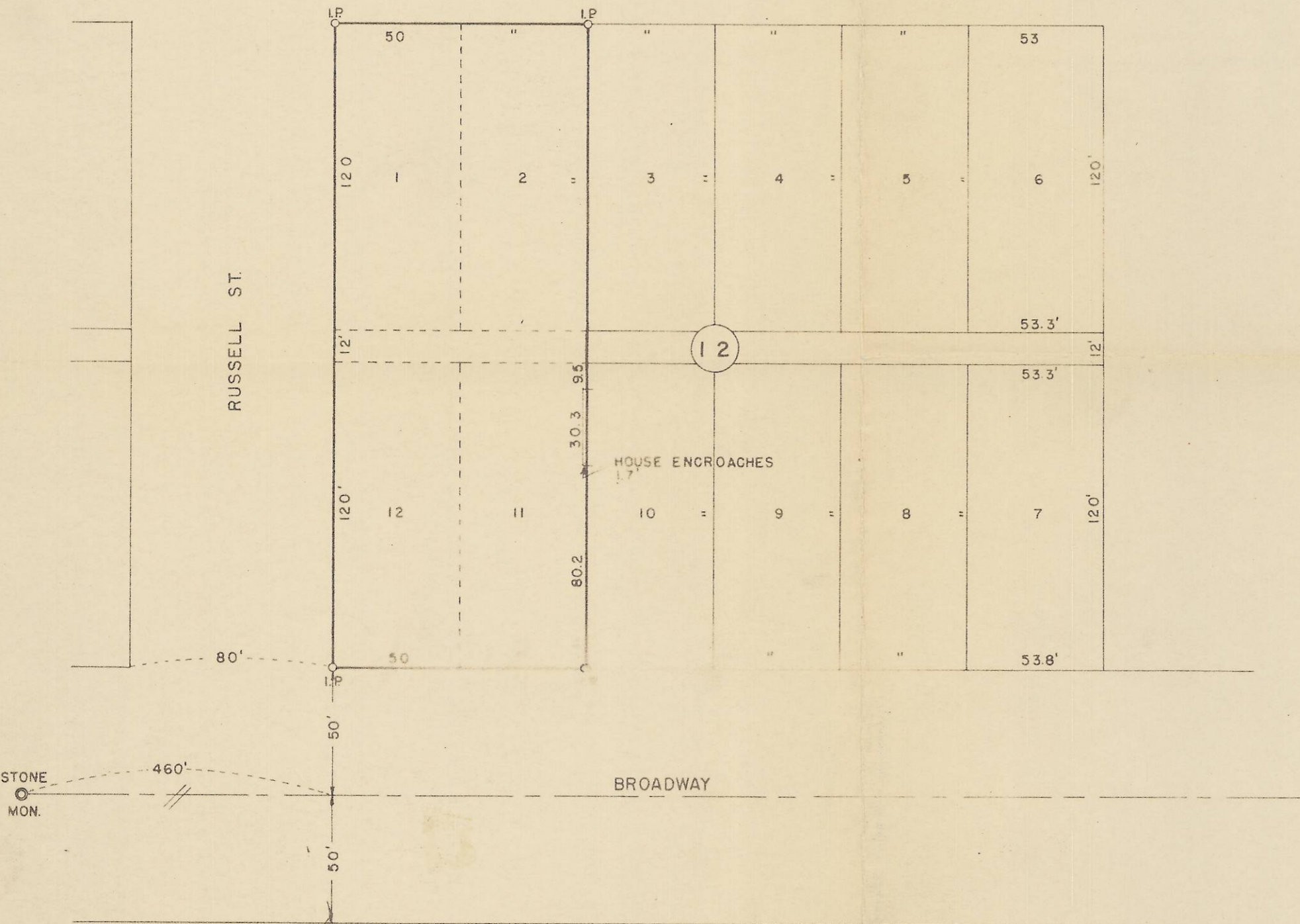
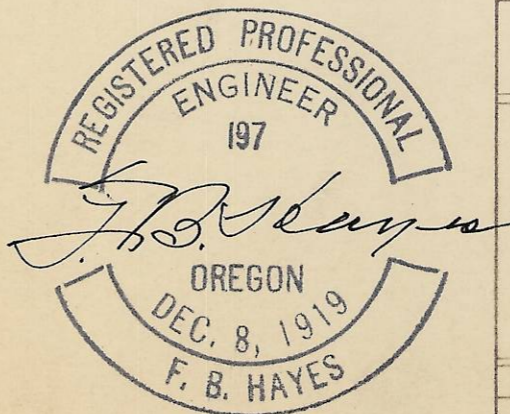


MILL ST.

RUSSELL ST.



SE 4(2) 5N352DA



HAYES & HARRIS ENGINEERING		
SURVEY FOR		
STOCKMEN'S MILLING COMPANY		
OF LOTS 1, 2, 11, & 12, BLOCK 12 N. MILTON ADD'N., MILTON-FREEWATER, ORE.		
SCALE	DATE	DRAWN BY
1" = 50'	11-27-54	W.O.H.

D-1006-A