

0180

Q-994-A

NW ①

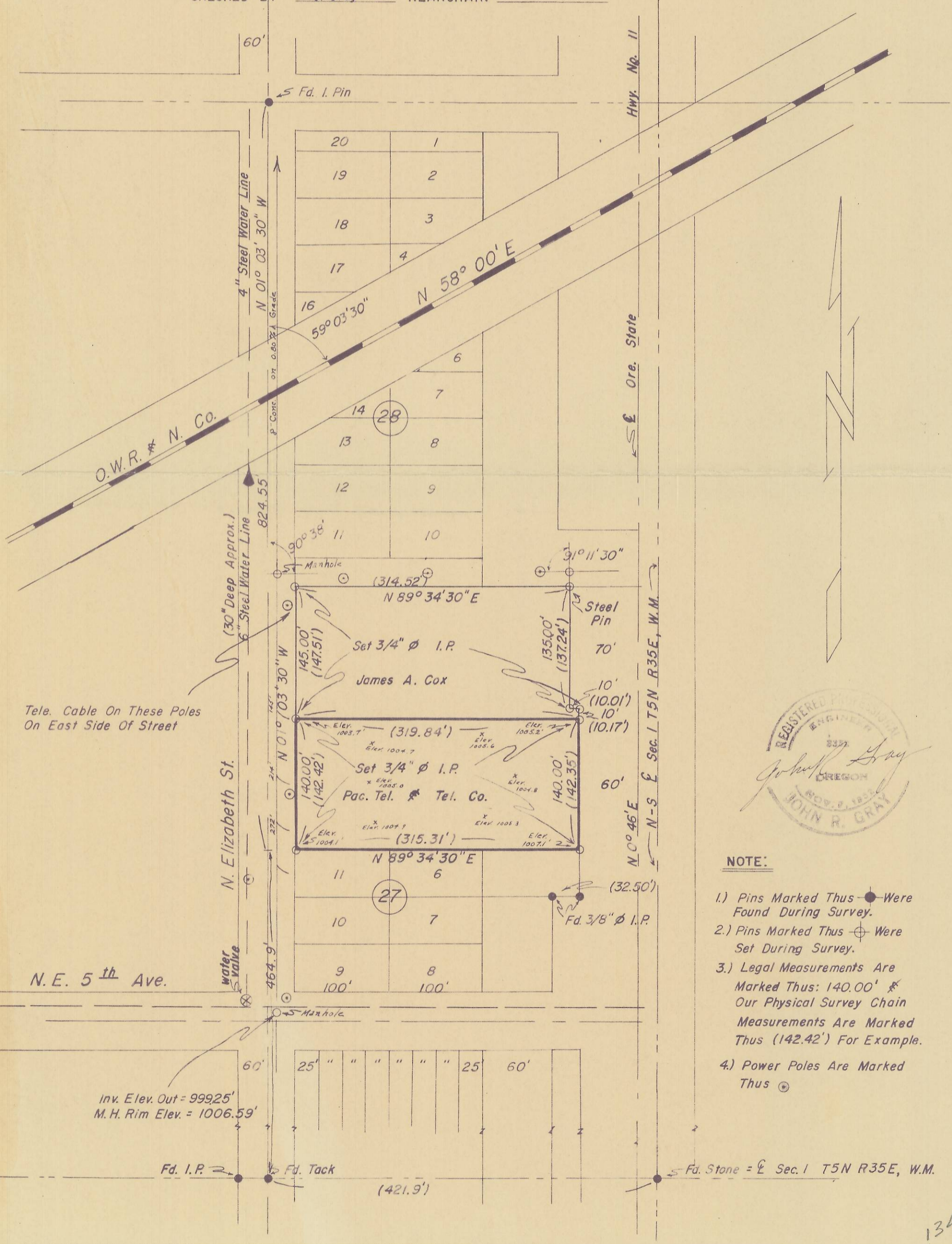
PROPERTY SURVEY

FOR

THE PACIFIC TEL. & TEL. CO. MILTON, OREGON, DIAL OFFICE

Located In Sec. 1 T5N, R35E, W.M.

DATE 6/27/55 SURVEYED BY J. Gray
 SCALE 1" = 100'-0" TRANSIT V. Williams
 DRAWN BY Schaefer HEADCHAIN Schaefer
 CHECKED BY J. Gray REARCHAIN _____



- NOTE:**
- 1.) Pins Marked Thus \bullet Were Found During Survey.
 - 2.) Pins Marked Thus \oplus Were Set During Survey.
 - 3.) Legal Measurements Are Marked Thus: 140.00' \times Our Physical Survey Chain Measurements Are Marked Thus (142.42') For Example.
 - 4.) Power Poles Are Marked Thus \odot

Inv. Elev. Out = 999.25'
 M.H. Rim Elev. = 1006.59'

Fd. Stone = $\&$ Sec. 1 T5N R35E, W.M.