

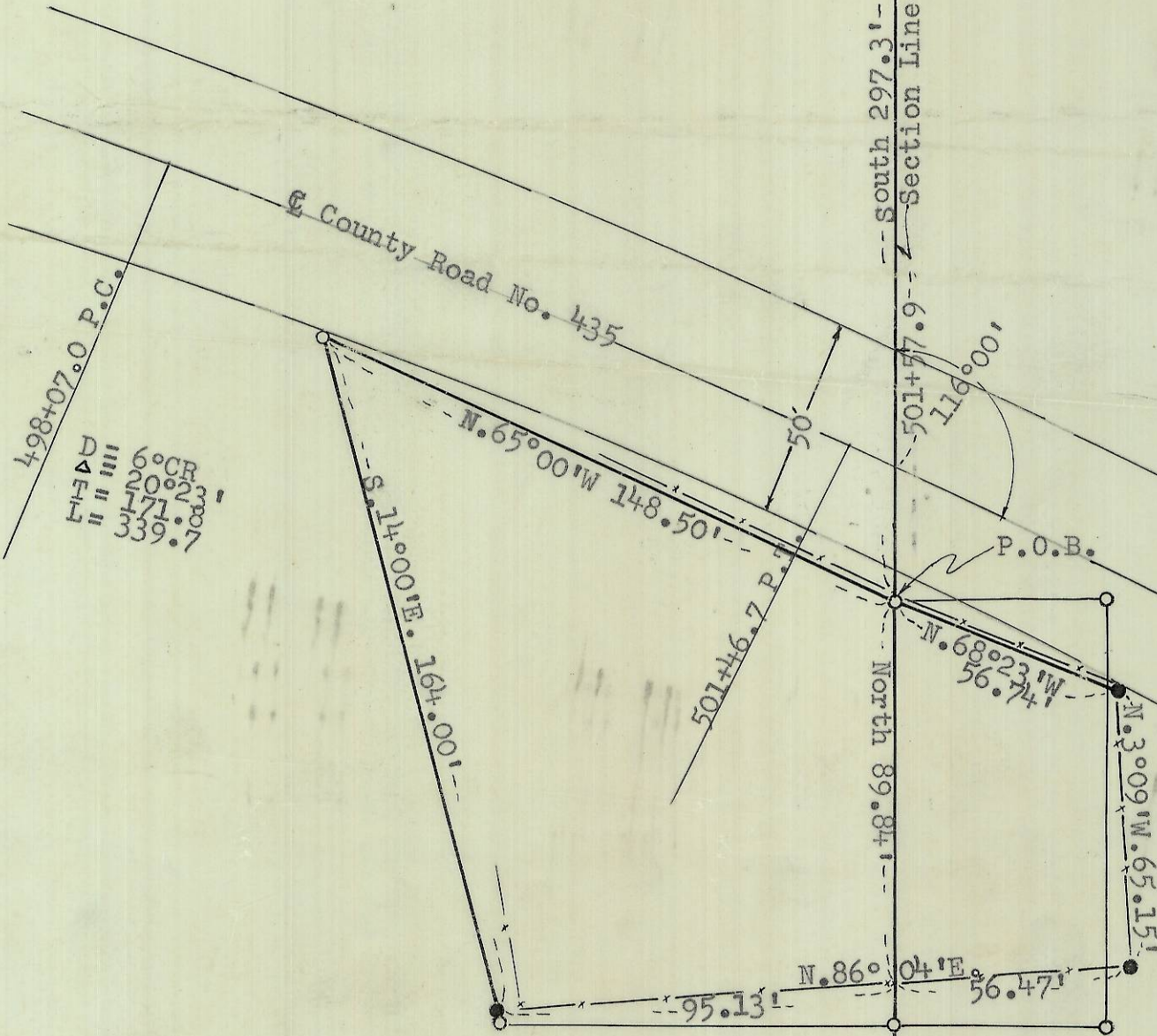
22 23
 Found a mound of stones
 73°N.R.3
 66°E.W.M.

REGISTERED
 OREGON
 LAND SURVEYOR

Ralph P. Thompson

MAY 13, 1960
 RALPH P. THOMPSON
 506

498+07.0 P.C.
 D = 6°CR
 T = 20°23'
 L = 171.08'
 L = 339.7



I, Ralph P. Thompson certify that this map is made from information obtained from an actual survey made by me, and marked with proper monuments as required by law.

LEGEND

- Existing fence lines
- Iron pins set on fence lines
- Iron pins set by me during a Previous survey dated Nov. 3, 1960

3N 36 22+23

PROPERTY SURVEY FOR

J.H. CRISPIN

SCALE	DATE	Drn. By	
1" = 40'	1/9/61	R.P.T.	

Q-541-A