

OR 19 Q 387-A

N. 66° 24' E.

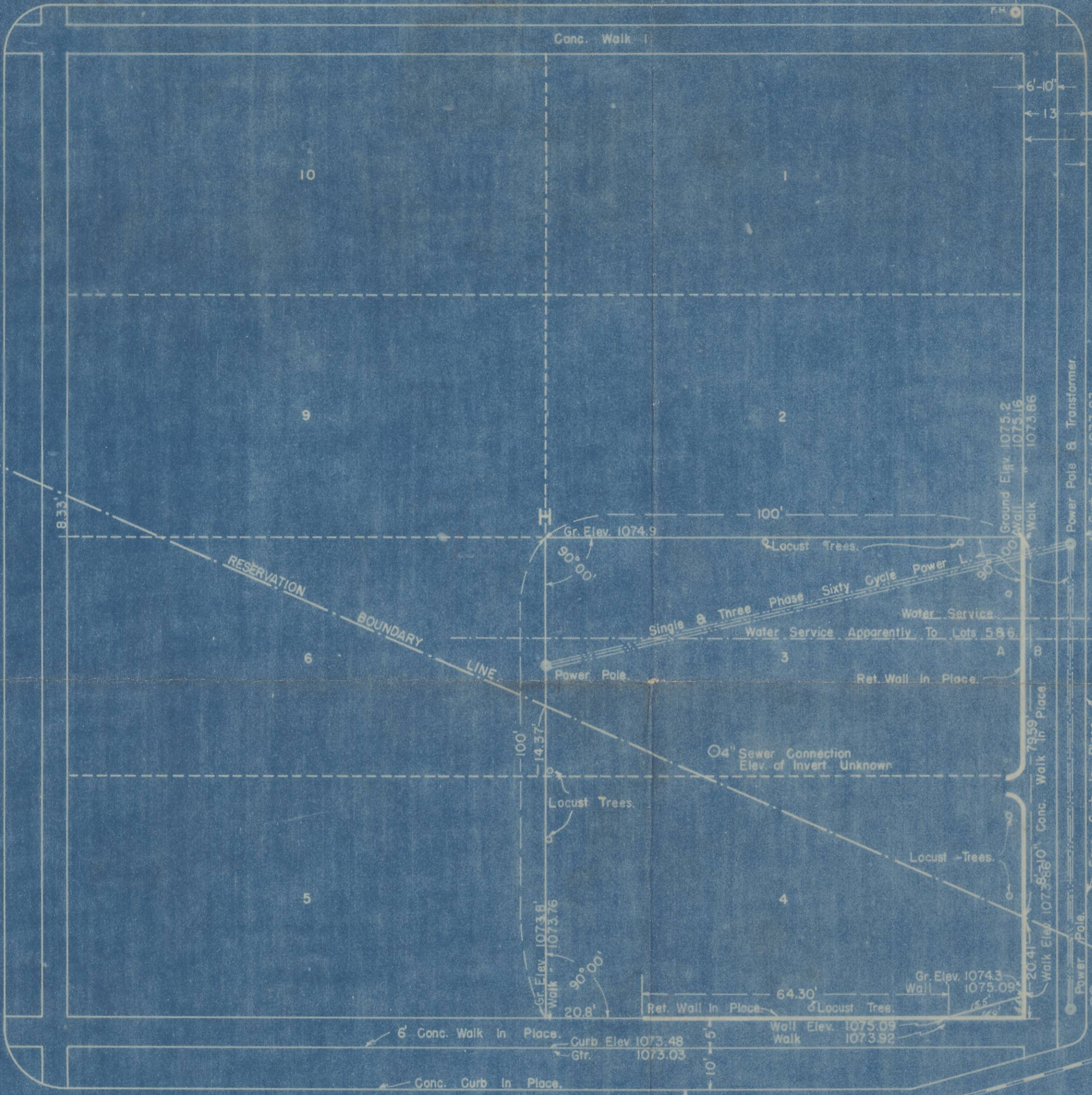
EMIGRANT AVE. (Formerly)

WEBB ST.

12" C.I. Water Main
BLACK TOP PAVEMENT.

S.E. 2ND ST. (Formerly) JOHNSON ST. N. 23° 36' W.

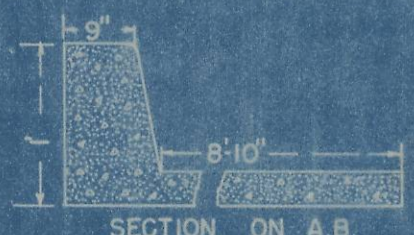
S.E. 3RD ST. (Formerly) THOMPSON ST. N. 23° 36' W.



FRAZER AVE. (Formerly) RAILROAD ST.

N. 66° 24' E.

BLACK TOP PAVEMENT.



SECTION ON A.B.

Scale 1/2" = 1"

PLAT OF LOTS THREE AND FOUR, BLOCK H
SOUTH PENDLETON AND RESERVATION ADN.
CITY OF PENDLETON, UMATILLA COUNTY,
OREGON.



257
(NW & SW) + NW (11)

11 B B