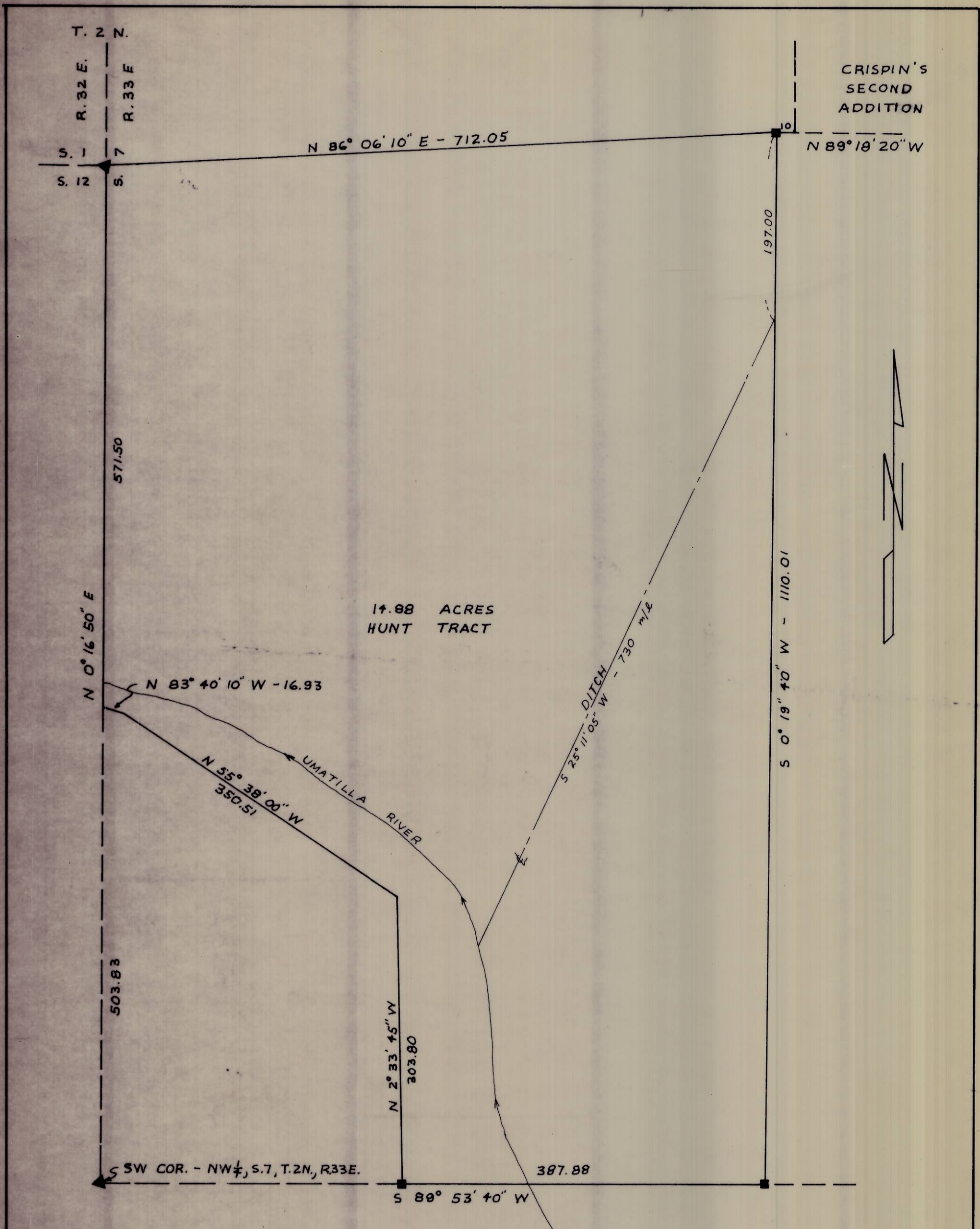
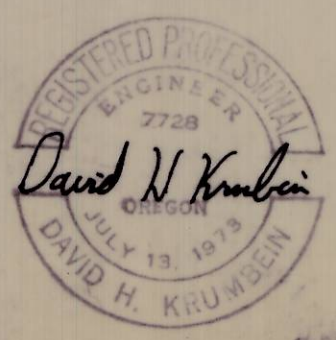


I-6-A



BEARINGS ARE BASED UPON TIES TO N.O.S. STATION "PENDLETON". THOSE SHOWN ARE TRUE.  $\theta = 1^{\circ}15'20''$ .

- SET 3/4" X 24" I. PIPE
- ▲ FOUND BRASS CAP



WAYNE HARRIS CO., INC.			
SURVEY FOR CRISPIN RANCHES			
DESCRIPTIVE PARCEL IN NW 1/4 SECTION 7, T. 2 N., R. 33 E., W. M.			
SCALE 1" = 100'	DATE 9-19-73	DRN BY DHK	DRNG NO 73-257-A

I 6

4-9-73