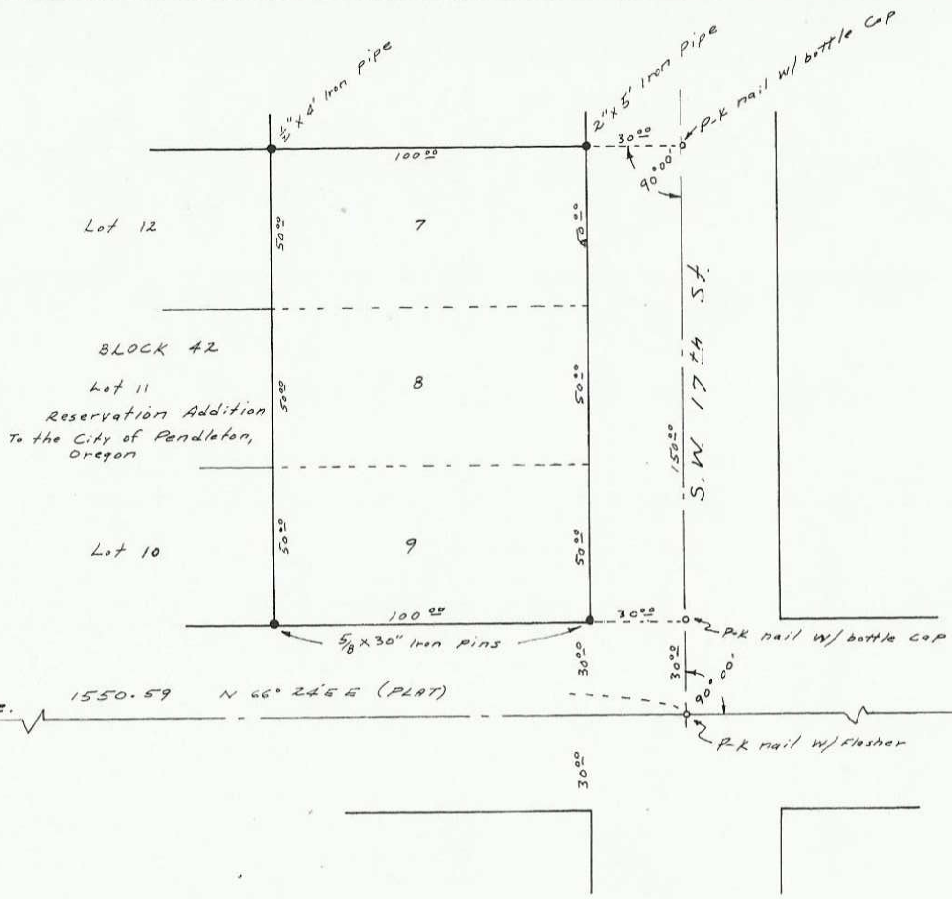


Brass cap in Conc. over original Stone Reservation Addition Manu. No. 2

S.W. Emigrant Ave.

1550.59 N 66° 24' 55" (PLAT)



Manu. of 11th St.



NE/10/14
16-20-34

LOT SURVEY FOR
CHARLES F. MONTEB
PENDLETON, OREGON

SCALE: 1" = 40' June 30, 1971

Donald L. Staebler
Consulting Engineer
P.O. Box 91
Pendleton, Oregon

H-12-A H-1