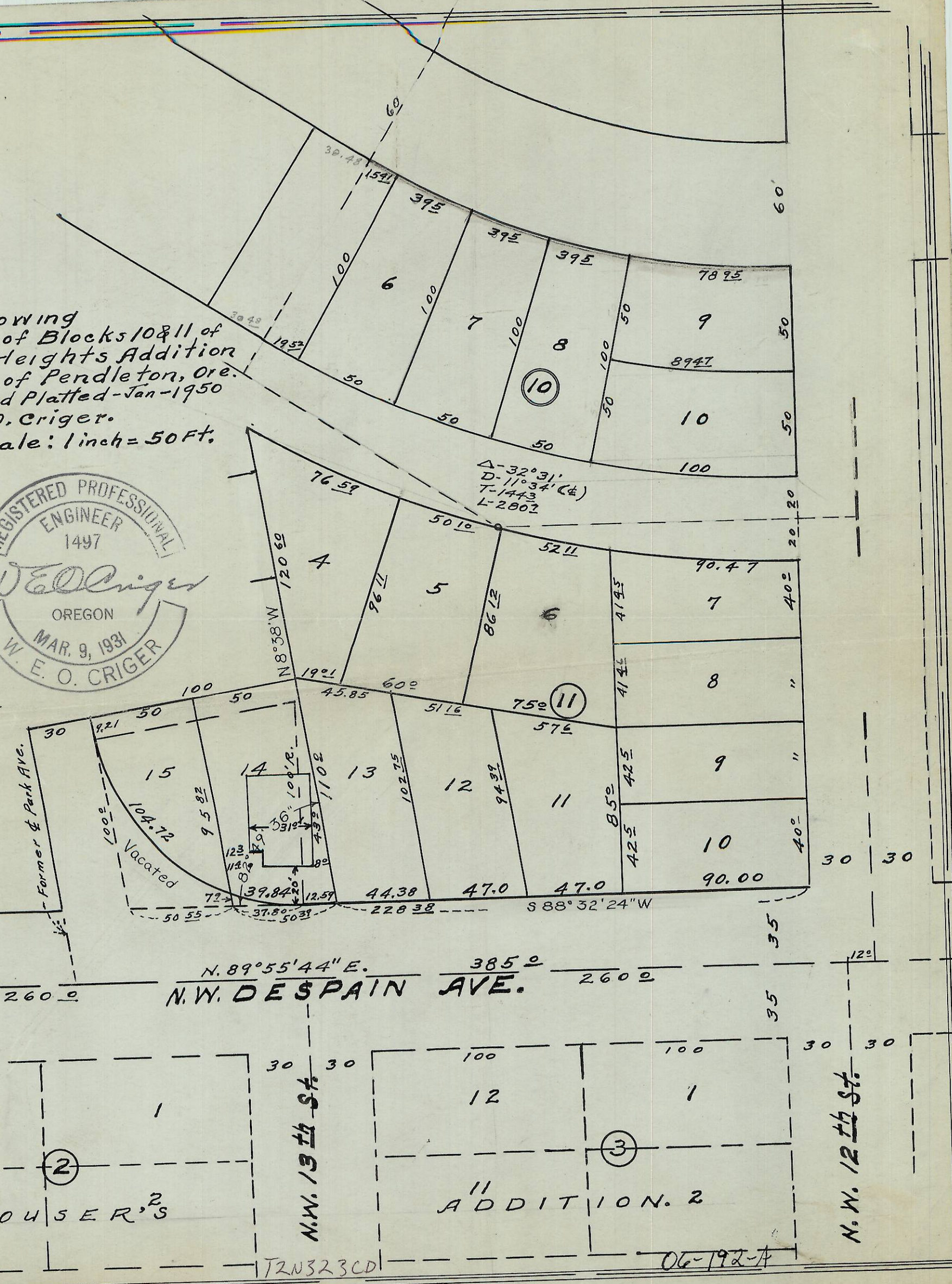
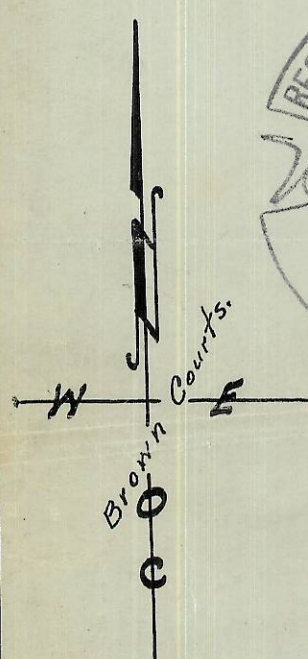
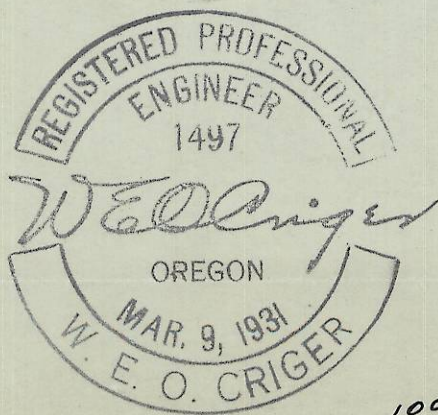


Plat Showing  
 a portion of Blocks 10 & 11 of  
 Irvington Heights Addition  
 to the city of Pendleton, Ore.  
 Surveyed and Platted - Jan - 1950  
 By - W. E. O. Criger.  
 Scale: 1 inch = 50 Ft.



$\Delta - 32^{\circ}31'$   
 $D - 11^{\circ}34'(\pm)$   
 $T - 1443$   
 $L - 2802$

N.  $89^{\circ}55'44''$  E.  $385.0$   
**N.W. DESPAIN AVE.**  $260.0$

11 HOUSER'S

ADDITION. 2

N.W. 13th St.

N.W. 12th St.

T2N323CD

06-192-A