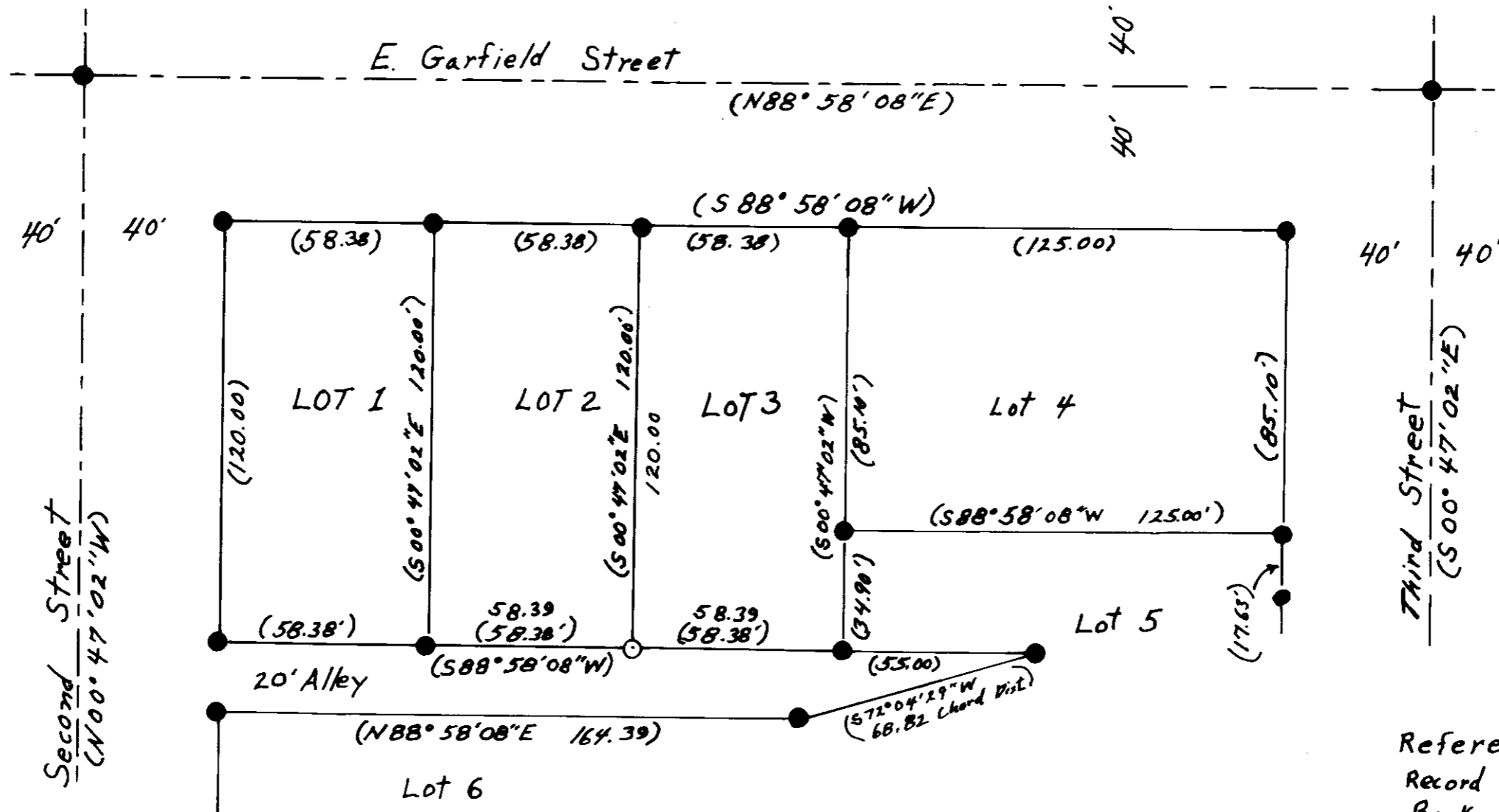


Survey of Lot 3 in Pixler's Replat, Umatilla County, Athena, Oregon
 Located in T4N, R35E, Section 19, NE 1/4 of NW 1/4, W.M.



Scale: 1" = 40'



Legend:

- Found Monuments as noted in Pixler's Replat
- Set 5/8" X 30" steel rebar with plastic Cap T.W.R.S. PLS 2364
- () Record bearing & distance

REGISTERED PROFESSIONAL LAND SURVEYOR

Thomas W.R. Smith
 OREGON
 JULY 26, 1988
 THOMAS W. R. SMITH
 2364

Renewal Date 6/30/2008

Narrative: Purpose of this survey was to reestablish the S.W. corner of Lot 3 that was destroyed during sanitary sewer construction. The same corner being the S.E. corner of lot 2.

Reference & Basis of Bearing:
 Record Map of Pixler's Replat,
 Book 13 page 140
 Umatilla County, Oregon

Surveyed for Tom & Edith Smith
 by T.W.R. Smith Oct. 14, 2002
 Drawn by T.W.R.S.

RECEIVED BY
 Umatilla County Surveyor
 Date 11-02
 Rec'd By KK
 No. 02-274-A