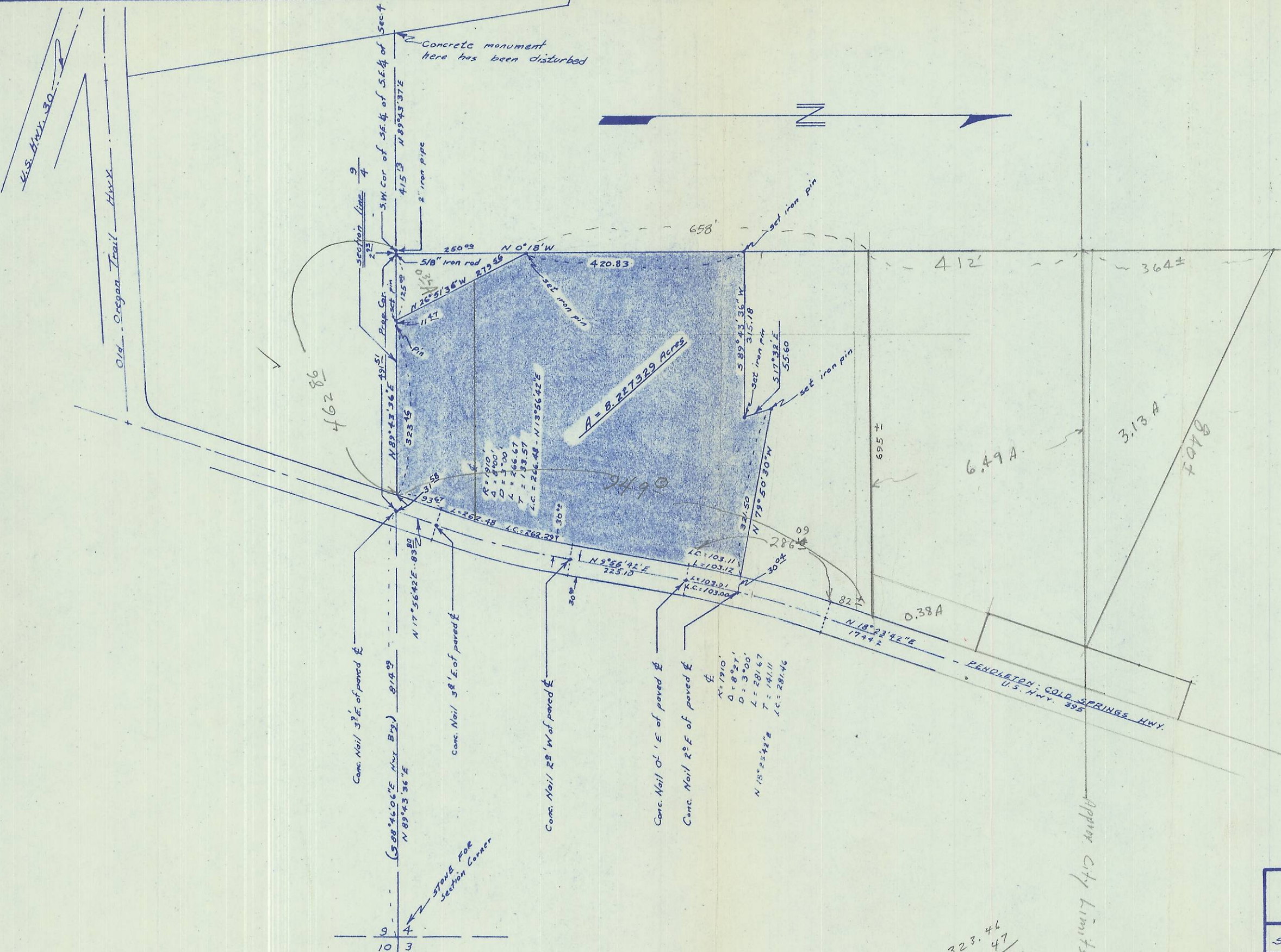


1.94
 .93 = 8.227 AC
 1.13 = 10. ACES



TOWNSHIP 2 NORTH
 RANGE 32 EAST OF W.M.



2N324C

LAND SURVEY FOR ED LORREN		
Scale 1"=200'	Date: 2-25-66	By: S.G.W.
WALLULIS & STAEBLER CONSULTING ENGINEERS 213 S.W. EMIGRANT P.O. Box 91 Pendleton Oregon		

323.46
 11.47

 334.93

99-178-A