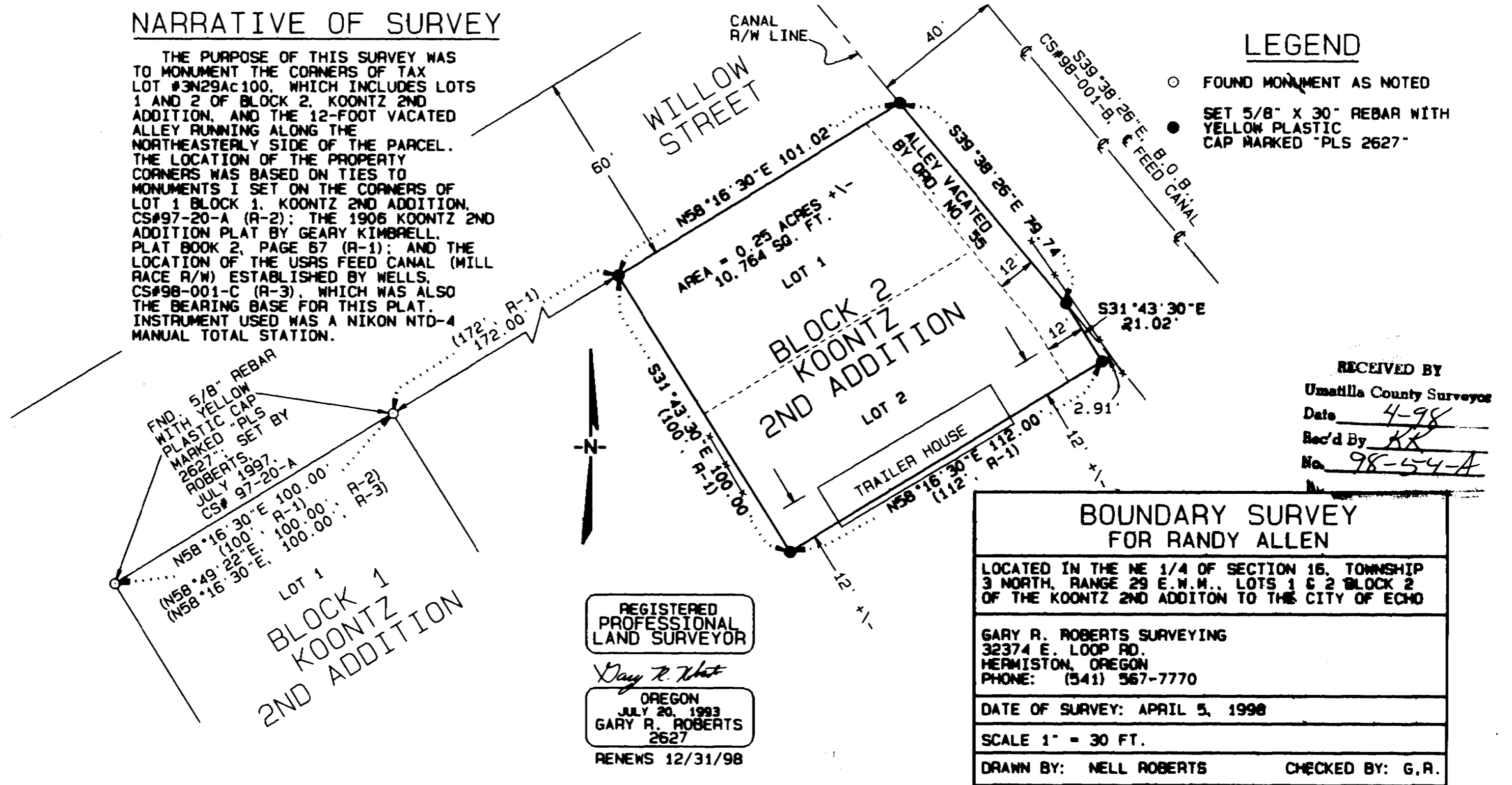


NARRATIVE OF SURVEY

THE PURPOSE OF THIS SURVEY WAS TO MONUMENT THE CORNERS OF TAX LOT #3N29Ac100, WHICH INCLUDES LOTS 1 AND 2 OF BLOCK 2, KOONTZ 2ND ADDITION, AND THE 12-FOOT VACATED ALLEY RUNNING ALONG THE NORTHEASTERLY SIDE OF THE PARCEL. THE LOCATION OF THE PROPERTY CORNERS WAS BASED ON TIES TO MONUMENTS I SET ON THE CORNERS OF LOT 1 BLOCK 1, KOONTZ 2ND ADDITION, CS#97-20-A (R-2); THE 1906 KOONTZ 2ND ADDITION PLAT BY GEARY KIMBRELL, PLAT BOOK 2, PAGE 67 (R-1); AND THE LOCATION OF THE USRS FEED CANAL (MILL RACE R/W) ESTABLISHED BY WELLS, CS#98-001-C (R-3), WHICH WAS ALSO THE BEARING BASE FOR THIS PLAT. INSTRUMENT USED WAS A NIKON NTD-4 MANUAL TOTAL STATION.

LEGEND

- FOUND MONUMENT AS NOTED
- SET 5/8" X 30" REBAR WITH YELLOW PLASTIC CAP MARKED "PLS 2627"



FND. 5/8" REBAR WITH YELLOW PLASTIC CAP MARKED "PLS 2627" SET BY ROBERTS JULY 1997. CS# 97-20-A

N58°16'30"E 100.00' R-2)
(100.00' R-1)
(N58°49'22"E 100.00' R-3)
(N58°16'30"E 100.00' R-3)

LOT 1
BLOCK 1
KOONTZ
2ND ADDITION

REGISTERED PROFESSIONAL LAND SURVEYOR

Gary R. Roberts
OREGON
JULY 20, 1993
GARY R. ROBERTS
2627
RENEWS 12/31/98

98-54-A