

# PLAT OF SURVEY

FOR PATRICIA STEINER

LOTS 1 THROUGH 11, BLOCK 1  
GEANAKOPULOS ADD'N TO DORIS (NOW RIETH)  
UMATILLA COUNTY, ORE.

LOCATED IN THE SW $\frac{1}{4}$  SEC. 7, T.2N., R.32E., W.M.

## LEGEND

- △ CORNER FOUND; BRASS CAP BY CO. SURVEYOR.
- CORNER FOUND; 1/2" IRON ROD BY PLS 933 IN 1976 WHICH BEARS N.50°E., 0.07' FROM COR. PT. ESTAB. THIS SURVEY.
- CORNER SET THIS SURVEY; 5/8" IRON ROD (REBAR) WITH YELLOW PLASTIC CAP MARKED PLS 1832.

REGISTERED  
PROFESSIONAL  
LAND SURVEYOR

*Fayette S. Munro*

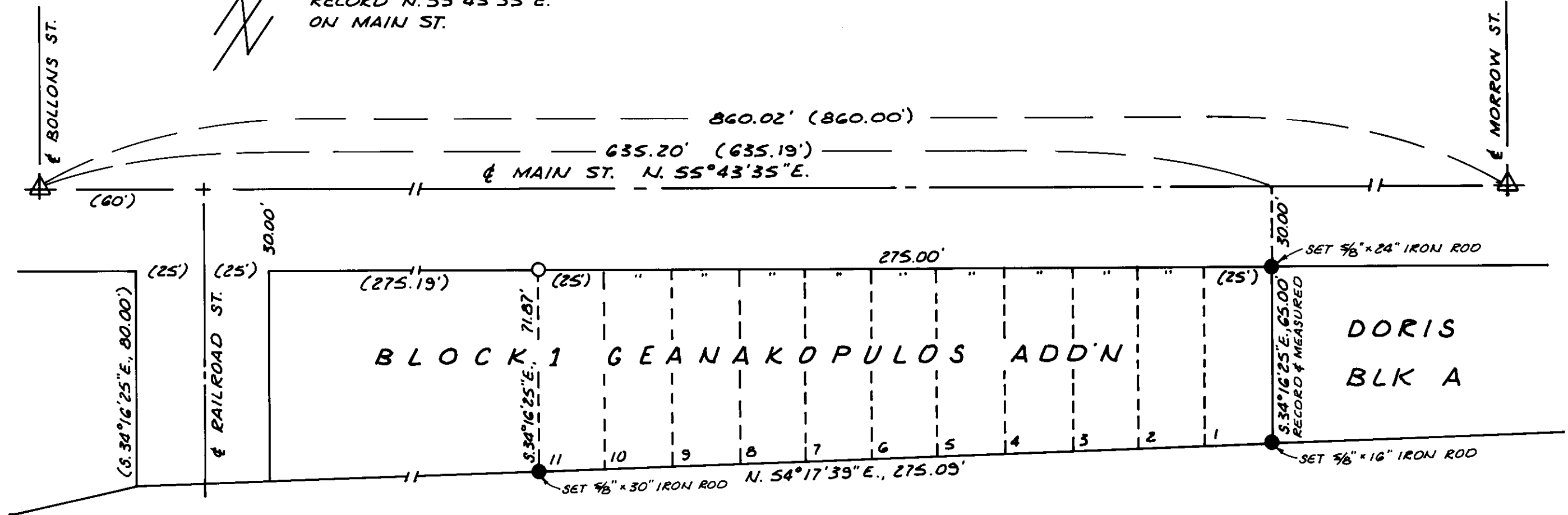
OREGON  
JULY 13, 1979  
FAYETTE S. MUNRO  
1832

## NARRATIVE

THIS SURVEY WAS PERFORMED IN NOV. AND DEC., 1989 IN ORDER TO LOCATE THE CORNERS OF A BLOCK OF 11 LOTS IN GEANAKOPULOS ADDITION. CONTROL FOR THE SURVEY WAS PROVIDED BY THE COUNTY SURVEYOR'S BRASS CAPS WHICH PERPETUATE ORIGINAL MONUMENTS OF DORIS. RECORD MEASUREMENTS ARE FROM THE PLATS OF DORIS AND GEANAKOPULOS.

SCALE 1"=40'

BASIS OF BEARINGS:  
RECORD N.55°43'35"E.  
ON MAIN ST.



RECORDED BY  
12-89  
89-135-A

89-135-A